

LOC I-EYE 111.5	APP CRS 211°	Rwy Idg 4200
		TDZE 823
		Apt Elev 823

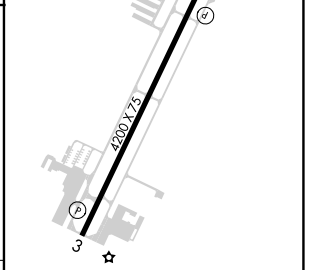
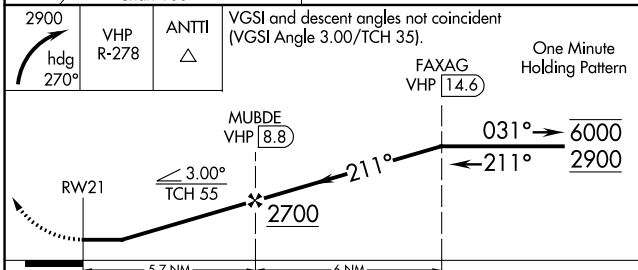
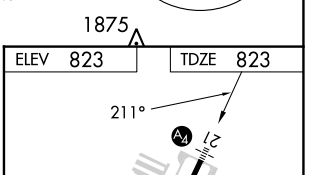
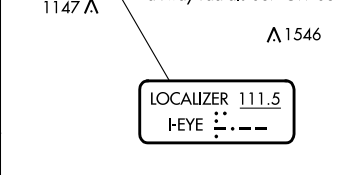
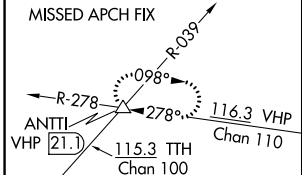
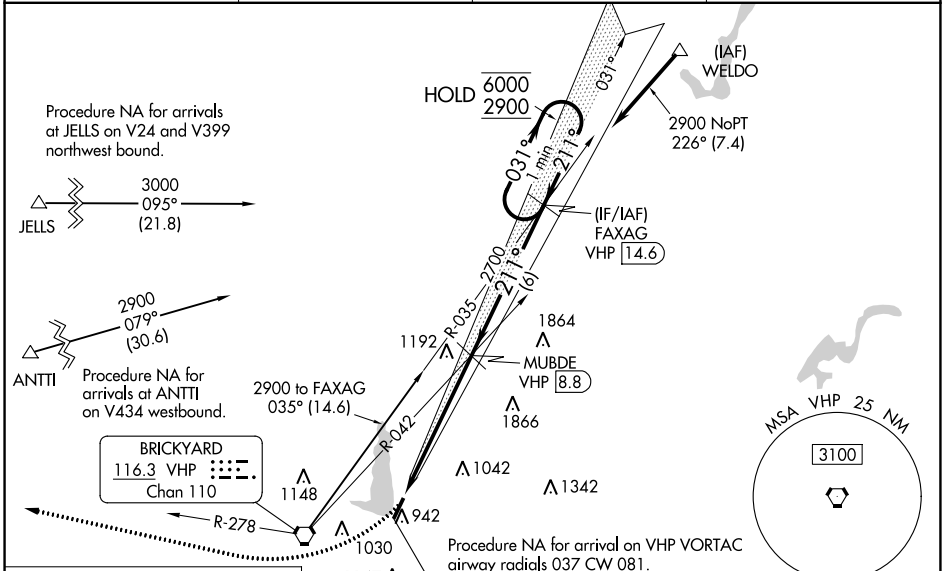
LOC RWY 21

EAGLE CREEK AIRPARK (EYE)

RNP APCH - GPS. From ANTTI or JELLS or WELDO.
 DME Required.
 Rwy 21 helicopter visibility reduction below 3/4 SM NA. Inop table does not apply to S-21 Cats A and B. When local altimeter setting not received, use Indianapolis Intl altimeter setting and increase all MDAs 20 feet. For inop ALS, increase Cat C visibility to 1 1/2 SM.

MALS MISSED APPROACH: Climbing right turn to 2900 on heading 270° and VHP R-278 to ANTTI INT/VHP 21.1 DME and hold.

ASOS 121.575	INDIANAPOLIS APP CON 119.05 317.8	CLNC DEL 128.6	UNICOM 122.8 (CTAF) 0
------------------------	---	--------------------------	---------------------------------



CATEGORY	A	B	C	D
S-21	1340-1	517 (600-1)	1340-1 1/4 517 (600-1 1/4)	NA
CIRCLING	1340-1 517 (600-1)	1340-2 517 (600-2)	1500-2 677 (700-2)	NA

MIRL Rwy 3-21	REIL Rwy 3-21
FAF to MAP 5.7 NM	
Knots	60 90 120 150 180
Min:Sec	5:42 3:48 2:51 2:17 1:54

EC-2, 26 DEC 2024 to 23 JAN 2025

EC-2, 26 DEC 2024 to 23 JAN 2025