

APP CRS	Rwy Idg	3013
092°	TDZE	197
	Apt Elev	197

RNAV (GPS) RWY 9

WETUMPKA MUNI (Ø8A)

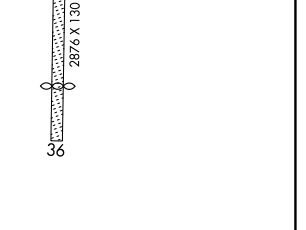
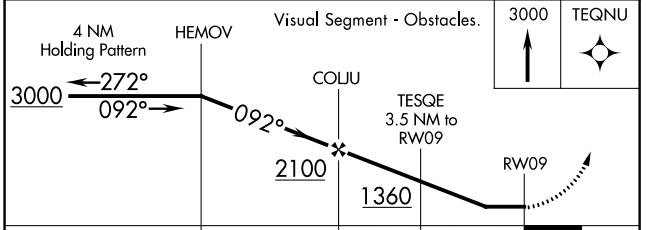
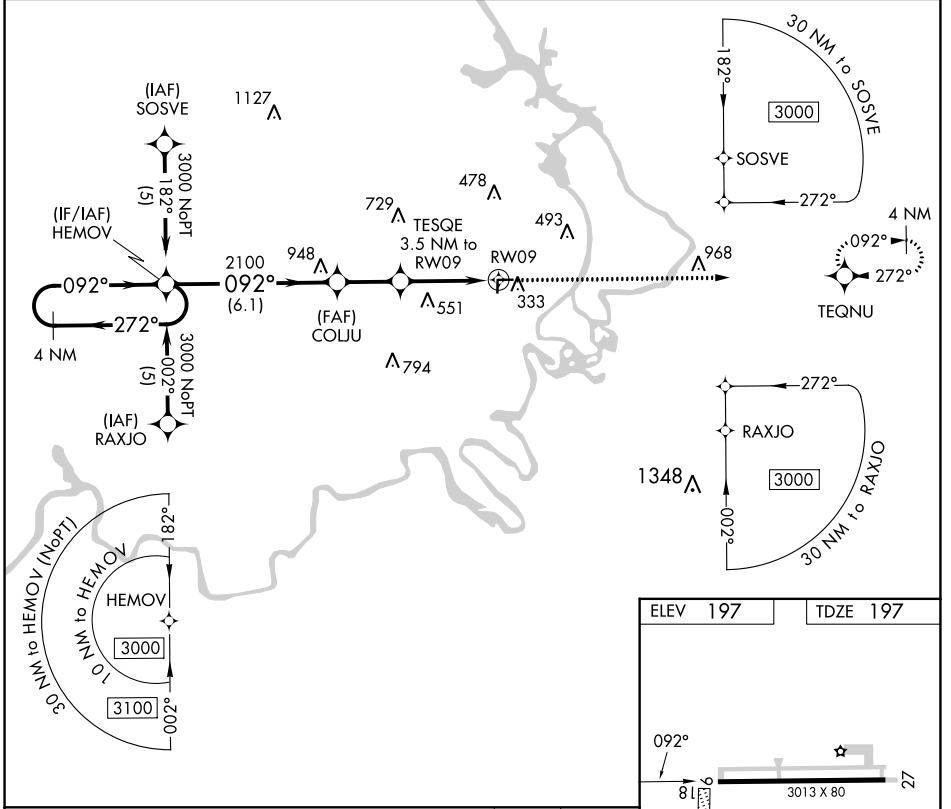
RNP APCH.

NA Rwy 9 helicopter visibility reduction below 1 SM NA. Procedure NA at night. Use Montgomery Rgnl (Dannelly Fld) altimeter setting; when not received, use Alexander City altimeter setting and increase all MDA 120 feet and increase LNAV Cat A visibility ¼ SM and LNAV Cat C visibility ½ SM.

MISSED APPROACH: Climb to 3000 direct TEQNU and hold.

MONTGOMERY APP CON ★
121.2 269.05

UNICOM
123.05 (CTAF) Ø



CATEGORY	A	B	C	D
LNAV MDA	1000-1 803 (900-1)	1000-1¼ 803 (900-1¼)	1000-2¼ 803 (900-2¼)	NA

REIL Rwy 9 and 27
MIRL Rwy 9-27 Ø

SE-4, 26 DEC 2024 to 23 JAN 2025

SE-4, 26 DEC 2024 to 23 JAN 2025