

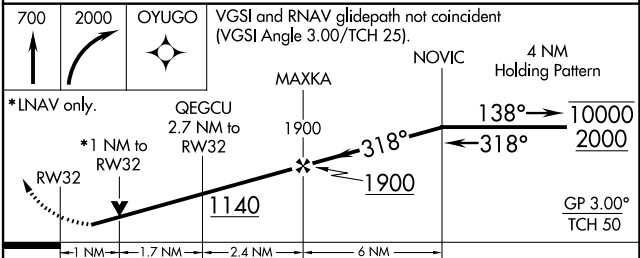
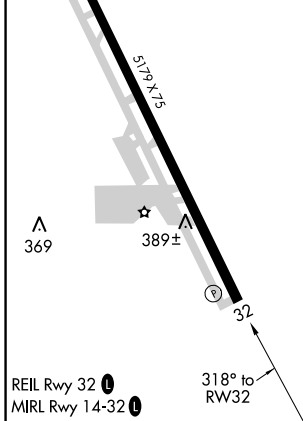
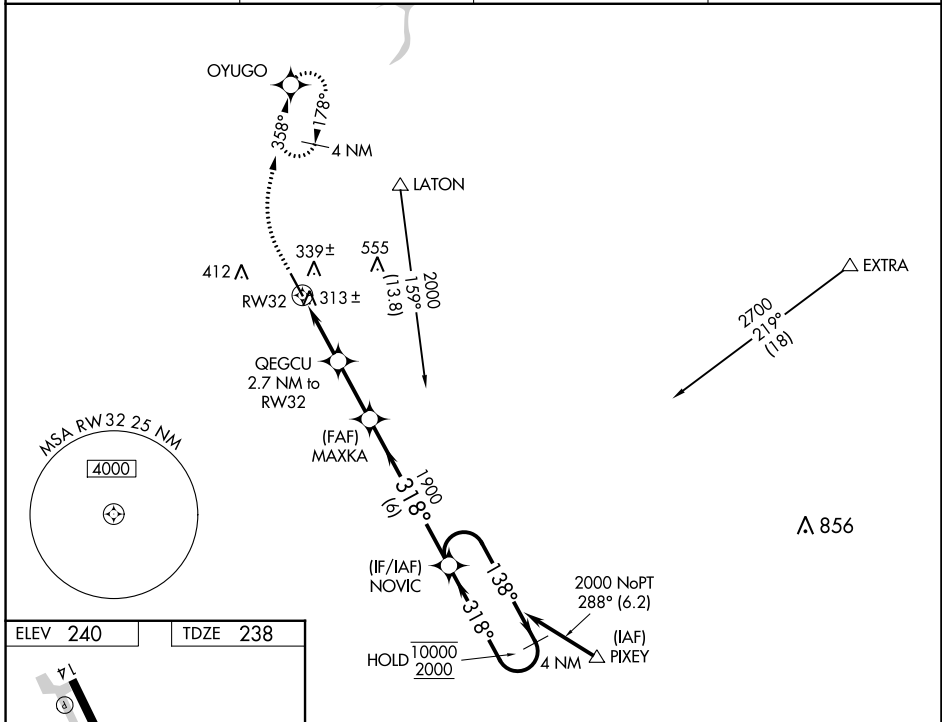
WAAS CH 70344 W32A	APP CRS 318°	Rwy Idg TDZE Apt Elev	5179 238 240
----------------------------------------	------------------------	-----------------------------	-----------------------------------------

RNAV (GPS) RWY 32

HANFORD MUNI (HJO)

RNP APCH.	MISSED APPROACH: Climb to 700 then climbing right turn to 2000 direct OYUGO and hold, continue climb-in-hold to 2000.
▼ Rwy 32 helicopter visibility reduction below 3/4 SM NA. For uncompensated Baro-VNAV systems, LNAV/VNAV NA below -3°C or above 54°C.	

ASOS 134.75	FRESNO APP CON 123.9	CLNC DEL 123.9	UNICOM 122.8 (CTAF)
-----------------------	--------------------------------	--------------------------	-------------------------------



	700	2000	OYUGO	VGSi and RNAV glidepath not coincident (VGSi Angle 3.00/TCH 25).	
	↑	↷	✧	MAXKA	NOVIC
				1900	4 NM Holding Pattern
				1140	10000
				1900	2000
				1 NM	GP 3.00° TCH 50
				1.7 NM	
				2.4 NM	
				6 NM	
CATEGORY	A	B	C	D	
LPV DA	488-3/4	250 (300-3/4)		NA	
LNAV/VNAV DA	488-3/4	250 (300-3/4)		NA	
LNAV MDA	580-1	342 (400-1)	580-1 1/2	342 (400-1 1/2)	NA

SW-2, 26 DEC 2024 to 23 JAN 2025

SW-2, 26 DEC 2024 to 23 JAN 2025