

VOR/DME CTF 114.55 Chan 92 (Y)	APP CRS 155°	Rwy Idg TDZE Apt Elev N/A N/A 364
--	------------------------	--

VOR-A

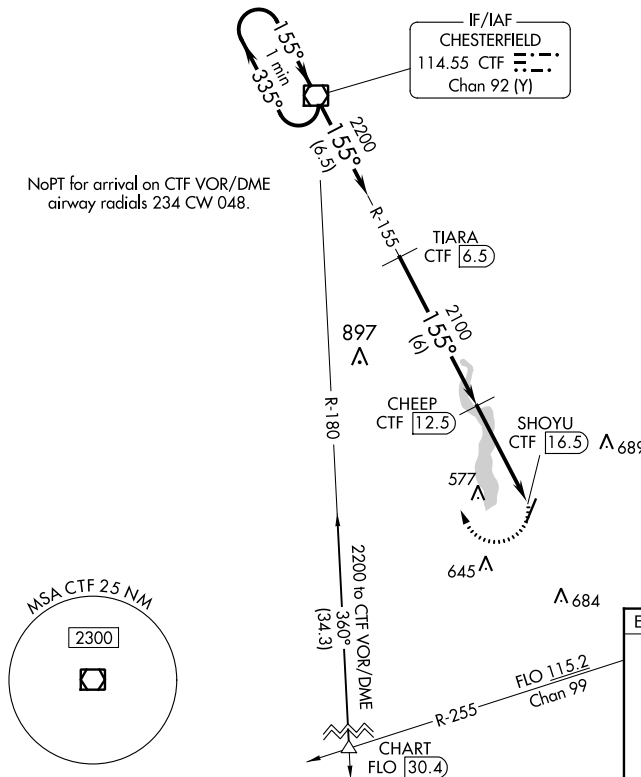
HARTSVILLE RGNL (HVS)

▼	DME required.	MISSED APPROACH: Climbing right turn to 2200 direct CTF VOR/DME and hold.
----------	---------------	---

AWOS-3 118.225	SHAW APP CON ★ 125.4 318.1	UNICOM 122.8 (CTAF) 0
--------------------------	--------------------------------------	---------------------------------

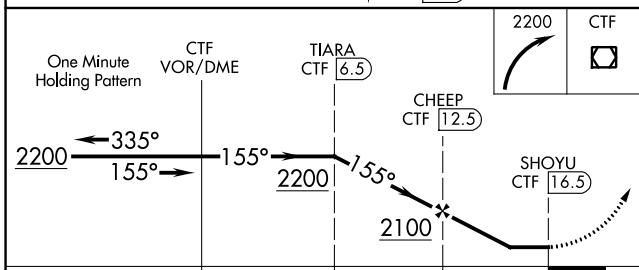
DME REQUIRED

NoPT for arrival on CTF VOR/DME
airway radials 234 CW 048.



SE-2, 26 DEC 2024 to 23 JAN 2025

SE-2, 26 DEC 2024 to 23 JAN 2025



CATEGORY	A	B	C	D
C CIRCLING	860-1	496 (500-1)	960-1½ 596 (600-1½)	NA

