

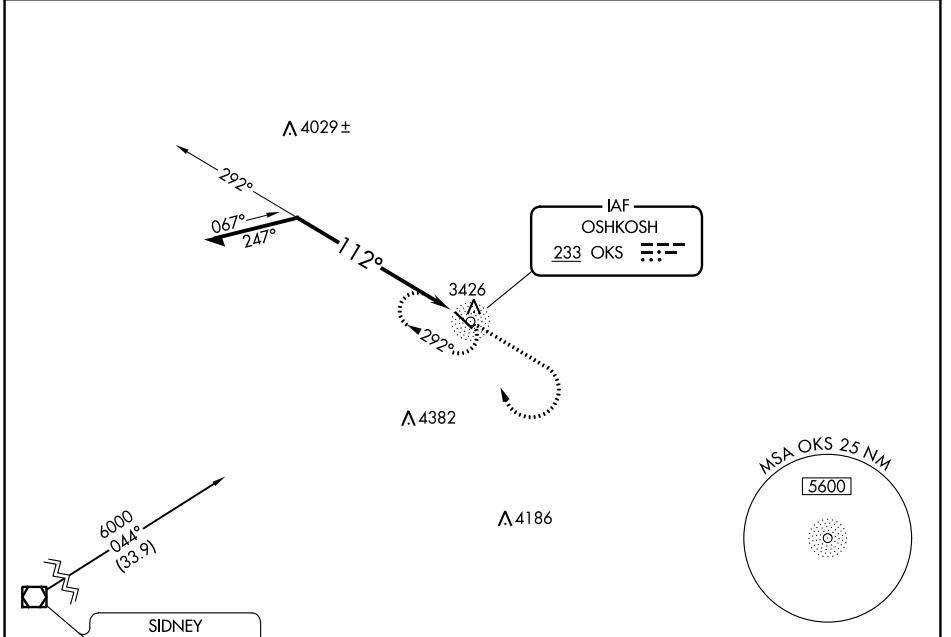
NDB OKS <b>233</b>	APP CRS <b>112°</b>	Rwy Idg TDZE Apt Elev	<b>4699</b> <b>3394</b> <b>3394</b>
-----------------------	------------------------	-----------------------------	---

# NDB RWY 12

GARDEN COUNTY/KING RHILEY FLD (OKS)

<b>NA</b>	Use Ogallala altimeter setting.	MISSED APPROACH: Climb to 5600 then right turn direct OKS NDB and hold.
-----------	---------------------------------	---

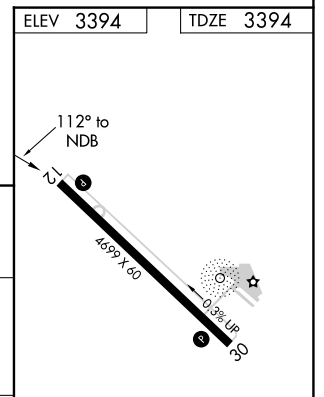
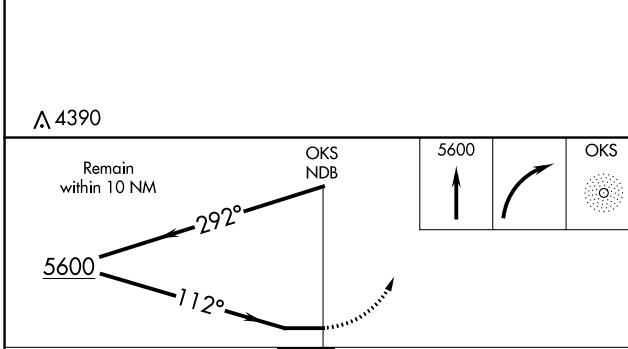
OGA AWOS-3 <b>121.275</b>	DENVER CENTER <b>118.475 225.4</b>	UNICOM <b>122.8 (CTAF) 1</b>
------------------------------	---------------------------------------	---------------------------------



NC-2, 26 DEC 2024 to 23 JAN 2025

NC-2, 26 DEC 2024 to 23 JAN 2025

ELEV 3394	TDZE 3394
-----------	-----------



CATEGORY	A	B	C	D
S-12	4600-1¼ 1206 (1300-1¼)	4600-1½ 1206 (1300-1½)	NA	
CIRCLING	4600-1¼ 1206 (1300-1¼)	4600-1½ 1206 (1300-1½)	NA	

REIL Rwy 12 and 30 **1**  
MIRL Rwy 12-30 **1**