

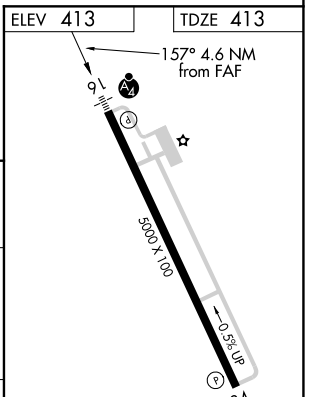
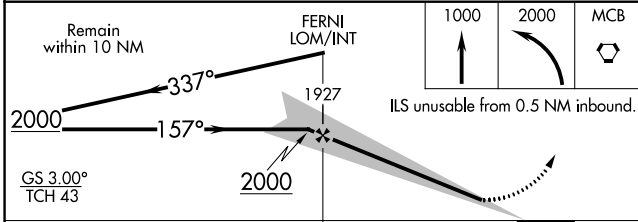
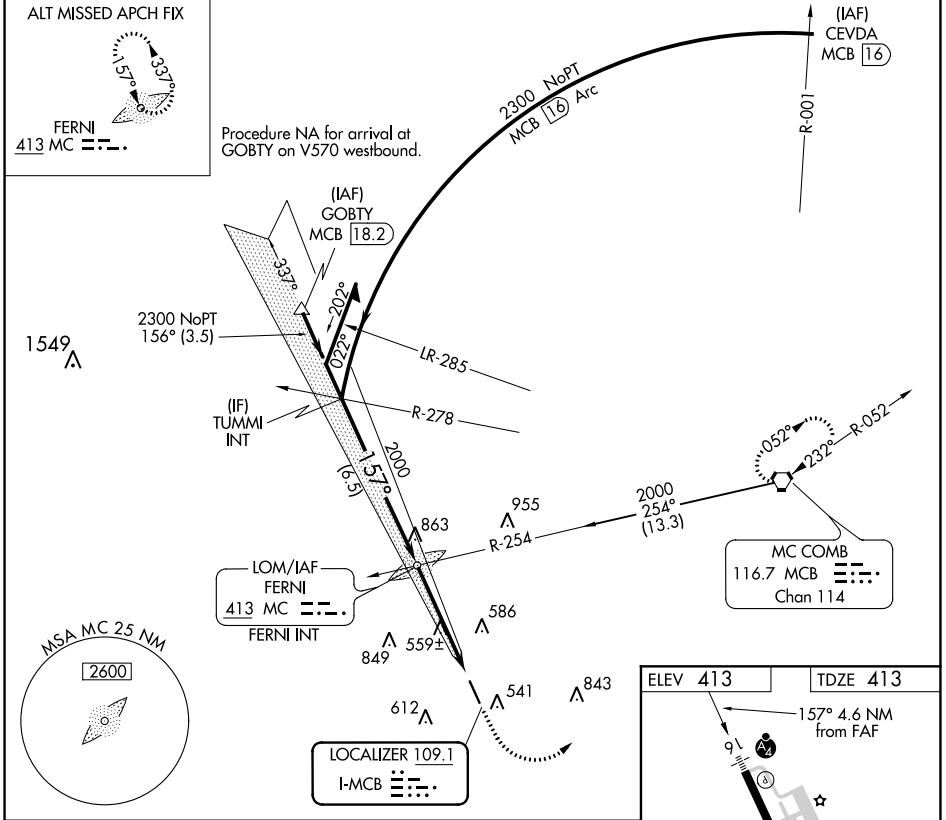
LOC I-MCB <b>109.1</b>	APP CRS <b>157°</b>	Rwy Idg <b>5000</b>
		TDZE <b>413</b>
		Apt Elev <b>413</b>

# ILS or LOC RWY 16

MC COMB/PIKE COUNTY/JOHN E LEWIS FLD (MCB)

<p>Inop table does not apply to S-ILS 16 all Cats and S-LOC 16 Cats C and D.</p>	<p>MALSF</p>	<p>MISSED APPROACH: Climb to 1000 then climbing left turn to 2000 direct MCB VORTAC and hold.</p>

ASOS <b>119.025</b>	HOUSTON CENTER <b>126.8 327.8</b>	UNICOM <b>123.05 (CTAF) 0</b>
------------------------	--------------------------------------	----------------------------------



CATEGORY	A	B	C	D	FAF to MAP 4.1 NM					
S-ILS 16	632-3/4 219 (300-3/4)				Knots	60	90	120	150	180
S-LOC 16	820-3/4	407 (500-3/4)	820-1/4	407 (500-1/4)	Min:Sec	4:06	2:44	2:03	1:38	1:22
◻ CIRCLING	880-1	467 (500-1)	940-1/2	1160-2/2						
			527 (600-1/2)	747 (800-2/2)						

SC-4, 26 DEC 2024 to 23 JAN 2025

SC-4, 26 DEC 2024 to 23 JAN 2025