

HI-ILS or LOC RWY 21

LOC/DME I-GTB 108.5 Chan 22	APCH CRS 209°	Rwy Idg 10,000 TDZE 677 Arprt Elev 690
---	-------------------------	---

[USA]

WHEELER-SACK AAF (KGTB)

DME or RADAR required.

- * When ALS inop, increase vis to ¾ mile.
- ** When ALS inop, increase CAT C vis to 1 mile, CAT DE vis to 1¼ miles.

ALSF-1

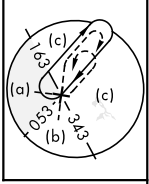
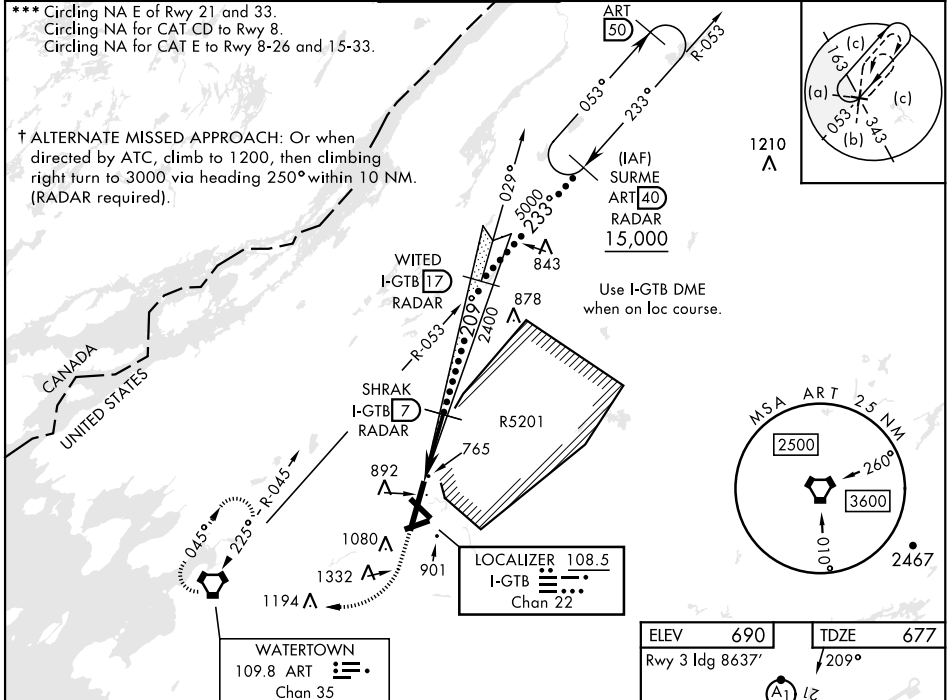


† MISSED APPROACH: Climb to 1200, then climbing right turn to 5000 direct ART VORTAC and hold. Continue climb in hold to 5000.

ATIS 119.525	APP CON 124.875 307.125	TOWER 118.75 290.25	GND CON 123.65 229.8	CLNC DEL 121.9	ASR/PAR
------------------------	-----------------------------------	-------------------------------	--------------------------------	--------------------------	---------

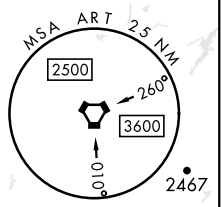
*** Circling NA E of Rwy 21 and 33.
Circling NA for CAT CD to Rwy 8.
Circling NA for CAT E to Rwy 8-26 and 15-33.

† ALTERNATE MISSED APPROACH: Or when directed by ATC, climb to 1200, then climbing right turn to 3000 via heading 250° within 10 NM. (RADAR required).

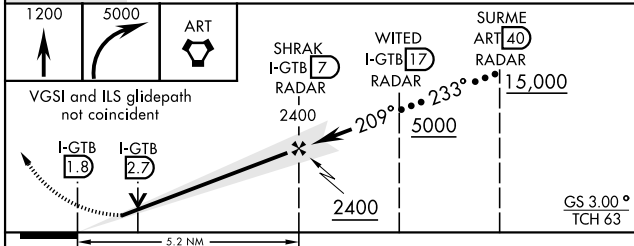


1210 A

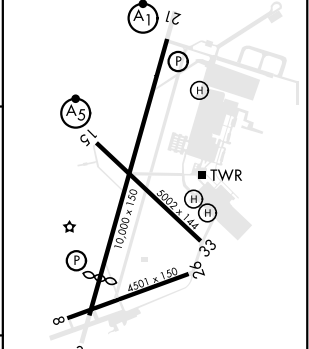
Use I-GTB DME when on loc course.



EMERG SAFE ALT 100 NM 7600



ELEV 690	TDZE 677
Rwy 3 Idg 8637'	209°



CATEGORY	C	D	E
S-ILS 21*	877-½	200	(200-½)
S-LOC 21**	1040-¾	363	(400-¾)
CIRCLING ***	1220-1½	1380-2¼	1640-3
	530 (600-1½)	690 (700-2¼)	950 (1000-3)

FAF to MAP 5.2 NM					
Knots	120	140	160	180	200
Min:Sec	2:36	2:14	1:57	1:44	1:34

HI-ILS or LOC RWY 21

NE-2, 26 DEC 2024 to 23 JAN 2025

NE-2, 26 DEC 2024 to 23 JAN 2025