

FORT DRUM, NEW YORK

HI-ILS or LOC RWY 3

WHEELER-SACK AAF (KGTB)

LOC/DME I-AEZ 108.5 Chan 22	APCH CRS 029°	Rwy Ildg TDZE Arpt Elev 8637 685 690
---	-------------------------	--

[USA]

DME or RADAR required

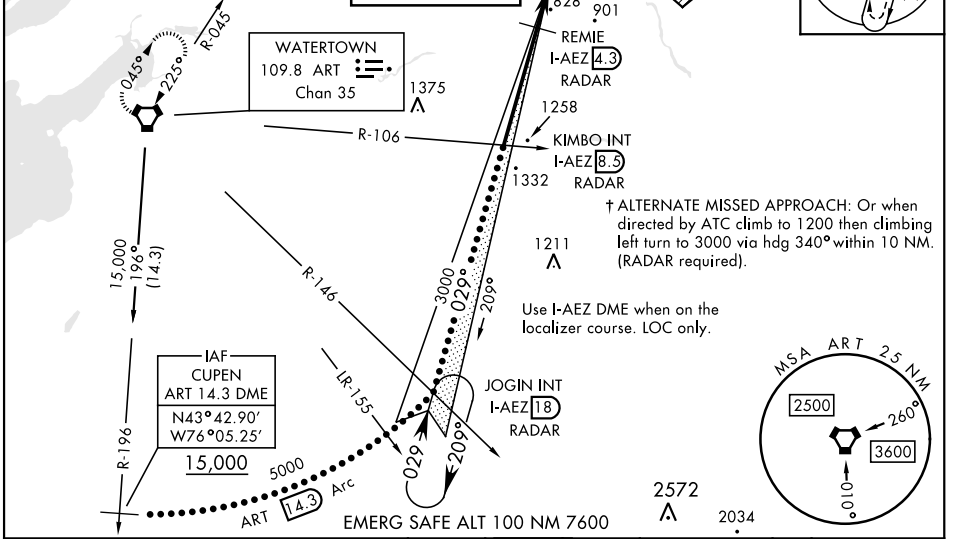
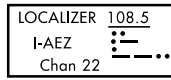


↑ MISSED APPROACH: Climb to 1200, then climbing left turn to 5000 direct ART VORTAC and hold, continue climb in hold to 5000.

* When ALS inop, increase vis to $\frac{1}{2}$ mile.
 ** When ALS inop, increase CAT C vis to $2\frac{1}{2}$ miles, CAT D vis to $2\frac{3}{4}$ miles, CAT E vis to 3 miles.

ATIS 119.525	APP CON 124.875 307.125	TOWER 118.75 290.25	GND CON 123.65 229.8	CLNC DEL 121.9	ASR/PAR
------------------------	-----------------------------------	-------------------------------	--------------------------------	--------------------------	---------

*** When ALS inop, increase CAT C vis to $1\frac{1}{2}$ mile, CAT D vis to $1\frac{1}{4}$ miles, CAT E vis to $1\frac{1}{2}$ miles.
 **** Circling NA E of Rwy 21 and 33. Circling NA for CAT CD to Rwy 8. Circling NA for CAT E to Rwy 8-26 and 15-33.



CUPEN R-196 ART 14.3	JOGIN INT ART R-146 I-AEZ 18 RADAR	KIMBO INT ART R-106 I-AEZ 8.3 RADAR	1200	5000	ART
15,000	5000	3000	1560		
GS 3.00° TCH 66	ART 14.3 Arc	3000	1560		
		4.2 NM	2.7 NM		
CATEGORY	C	D	E		
S-ILS 3*	957- $\frac{1}{2}$ 272 (300- $\frac{1}{2}$)				
S-LOC 3**	1560-2 875 (900-2)	1560-2 $\frac{1}{4}$ 875 (900-2 $\frac{1}{4}$)	1560-2 $\frac{1}{2}$ 875 (900-2 $\frac{1}{2}$)		
CIRCLING ****	1560-2 $\frac{1}{2}$ 870 (900-2 $\frac{1}{2}$)	1560-2 $\frac{3}{4}$ 870 (900-2 $\frac{3}{4}$)	1640-3 950 (1000-3)		
DME MINIMUMS					
S-LOC 3 ***	1080- $\frac{3}{4}$ 395	400- $\frac{3}{4}$		1080-1 395 (400-1)	
CIRCLING ****	1220-1 $\frac{1}{2}$ 530 (600-1 $\frac{1}{2}$)	1380-2 $\frac{1}{4}$ 690 (700-2 $\frac{1}{4}$)	1640-3 950 (1000-3)		

ELEV 690	TDZE 685
Rwy 3 Ildg 8637' HIRL Rwy 3-21, 15-33 MRL Rwy 8-26, RAIL Rwy 15	TWR 763
FAF to MAP 6.9 NM	
Knots	120 140 160 180 200
Min:Sec	3:27 2:57 2:35 2:18 2:04

FORT DRUM, NEW YORK
Amdt 2 20APR23

44°03'N-75°43'W

WHEELER-SACK AAF (KGTB)

HI-ILS or LOC RWY 3

NE-2, 26 DEC 2024 to 23 JAN 2025

NE-2, 26 DEC 2024 to 23 JAN 2025