

LOC/DME I-AEZ <b>108.5</b> Chan <b>22</b>	APCH CRS <b>029°</b>	Rwy ldg TDZE Arpt Elev <b>8637</b> <b>685</b> <b>690</b>
---	-------------------------	---

[USA]

DME or RADAR required. RADAR required for procedure entry.

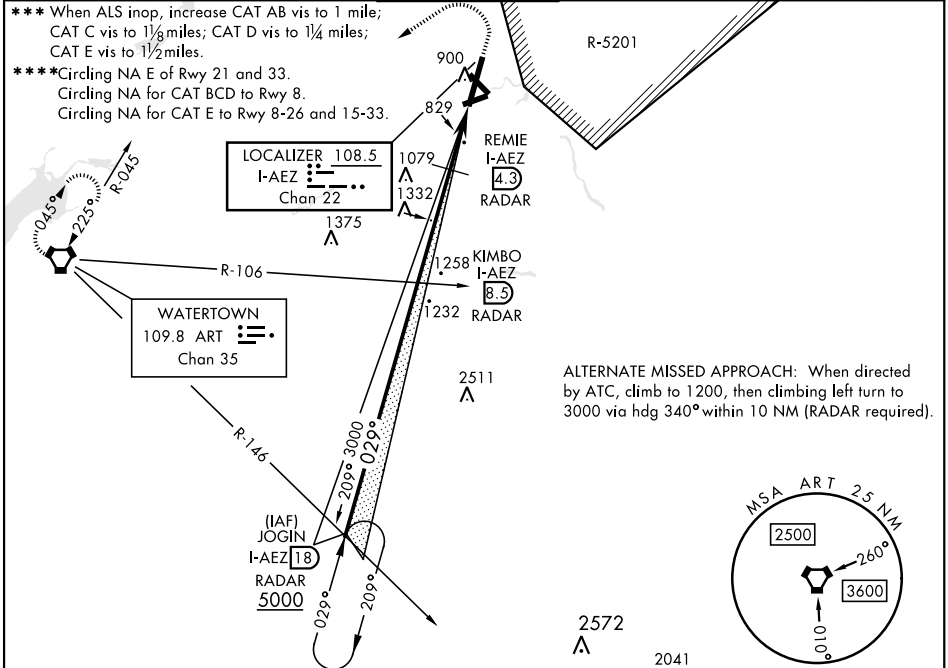
\* When ALS inop, increase vis to ¾ mile.  
 \*\* When ALS inop, increase CAT A vis to 1 mile, CAT B vis to 1¼ miles, CAT C vis to 2½ miles, CAT D vis to 2¾ miles, CAT E vis to 3 miles.



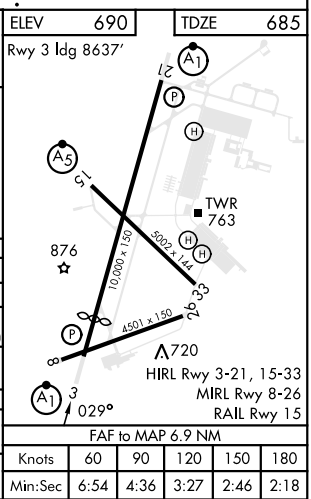
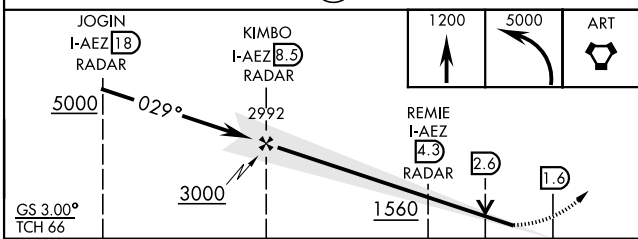
MISSED APPROACH: Climb to 1200, then climbing left turn to 5000 direct ART VORTAC and hold. Continue climb-in-hold to 5000.

ATIS <b>119.525</b>	APP CON <b>124.875 307.125</b>	TOWER <b>118.75 290.25</b>	GND CON <b>123.65 229.8</b>	CLNC DEL <b>121.9</b>	ASR/PAR
------------------------	-----------------------------------	-------------------------------	--------------------------------	--------------------------	---------

\*\*\* When ALS inop, increase CAT AB vis to 1 mile; CAT C vis to 1½ miles; CAT D vis to 1¼ miles; CAT E vis to 1½ miles.  
 \*\*\*\* Circling NA E of Rwy 21 and 33. Circling NA for CAT BCD to Rwy 8. Circling NA for CAT E to Rwy 8-26 and 15-33.



ALTERNATE MISSED APPROACH: When directed by ATC, climb to 1200, then climbing left turn to 3000 via hdg 340° within 10 NM (RADAR required).



CATEGORY	A	B	C	D	E
S-ILS 3 *	957-½		272	(300-½)	
S-LOC 3 **	1560-½ 875 (900-½)	1560-¾ 875 (900-¾)	1560-2 875 (900-2)	1560-2¼ 875 (900-2¼)	1560-2½ 875 (900-2½)
**** CIRCLING	1560-1¼ 870 (900-1¼)		1560-2½ 870 (900-2½)	1560-2¾ 870 (900-2¾)	1640-3 950 (1000-3)
DME MINIMUMS					
S-LOC 3 ***	1080-½ 395 (400-½)		1080-¾ 395 (400-¾)	1080-1 395 (400-1)	
**** CIRCLING	1200-1 510 (600-1)		1220-1½ 530 (600-1½)	1380-2¼ 690 (700-2¼)	1640-3 950 (1000-3)

NE-2, 26 DEC 2024 to 23 JAN 2025

NE-2, 26 DEC 2024 to 23 JAN 2025