

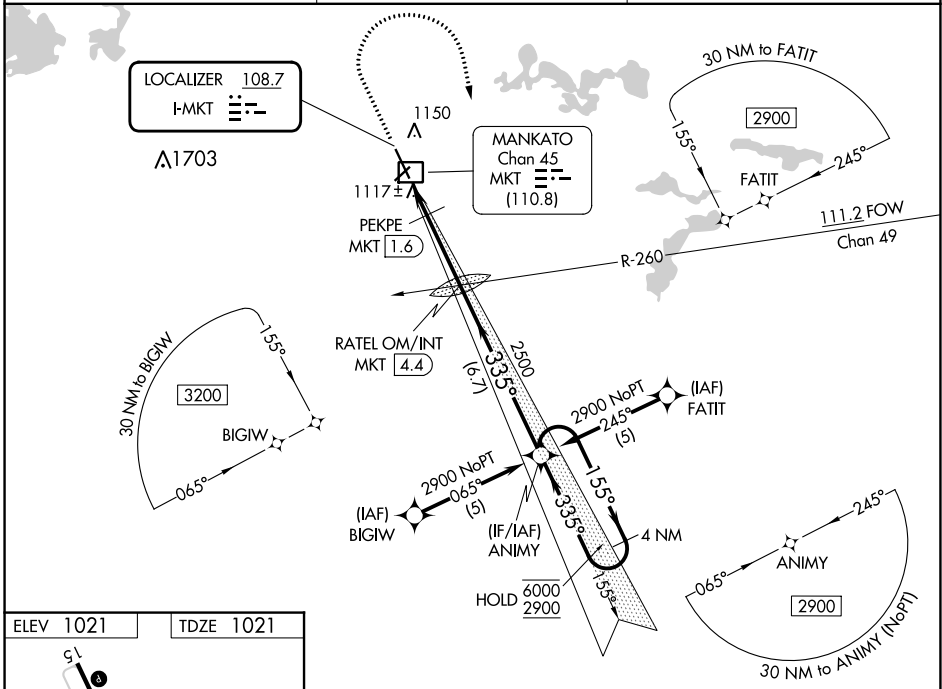
LOC I-MKT 108.7	APP CRS 335°	Rwy Idg TDZE Apt Elev	6600 1021 1021
---------------------------	------------------------	-----------------------------	---

COPTER ILS Z or LOC Z RWY 33

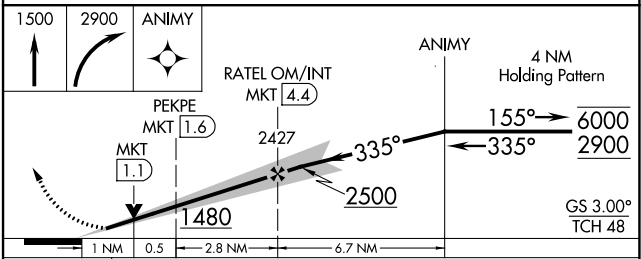
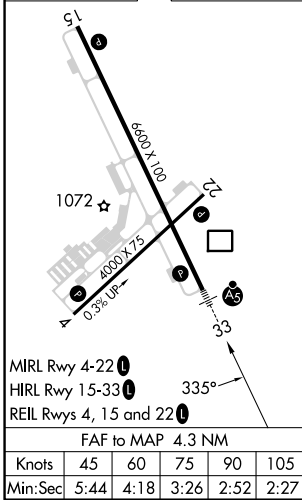
MANKATO RGNL (MKT)

RNP APCH - GPS.	MALSRL	MISSED APPROACH: Climb to 1500 then climbing right turn to 2900 direct ANIMY and hold.
<p>▼ NA</p> <p>DME from MKT DME. DME use requires simultaneous reception of I-MKT and MKT DME. For inop ALS, increase H-ILS 33 visibility to 3/8 SM, H-LOC 33 to 1/2 SM, and PEKPE fix minimums H-LOC 33 to 1/2 SM. * DME from MKT DME.</p>		

AWOS-3PT 118.175	MINNEAPOLIS CENTER 135.0 306.9	UNICOM 122.725 (CTAF) 0
----------------------------	--	--



ELEV 1021	TDZE 1021
-----------	-----------



CATEGORY	COPTER	
H-ILS 33	1221-1/4	200 (200-1/4)
H-LOC 33	1480-1/4	459 (500-1/4)
PEKPE FIX MINIMUMS*		
H-LOC 33	1380-1/4	359 (400-1/4)

COPTER ILS Z or LOC Z RWY 33

NC-1, 26 DEC 2024 to 23 JAN 2025

NC-1, 26 DEC 2024 to 23 JAN 2025