


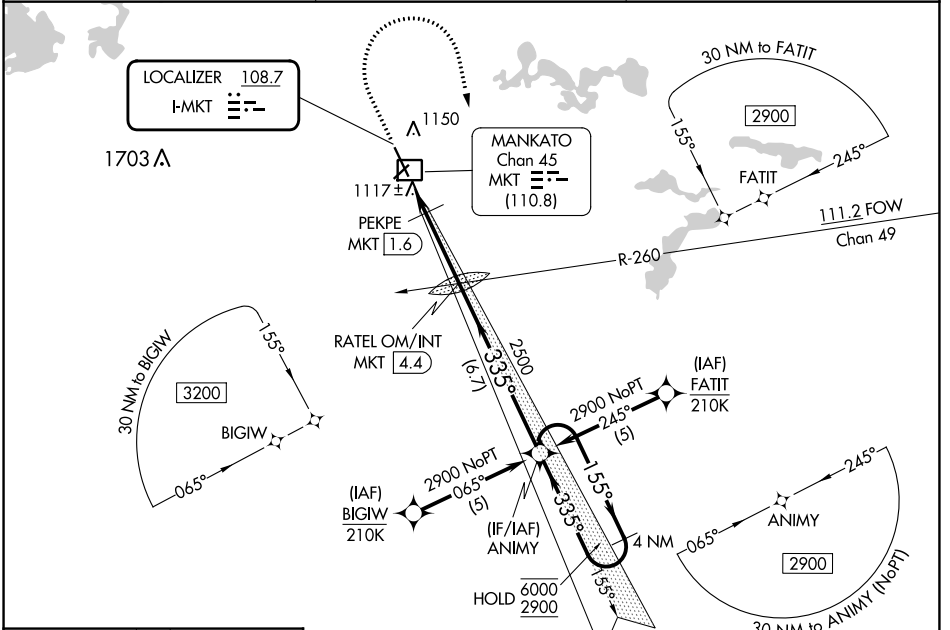
LOC I-MKT **108.7** APP CRS **335°** Rwy Idg **6600**
 TDZE **1021** Apt Elev **1021**

ILS Y or LOC Y RWY 33

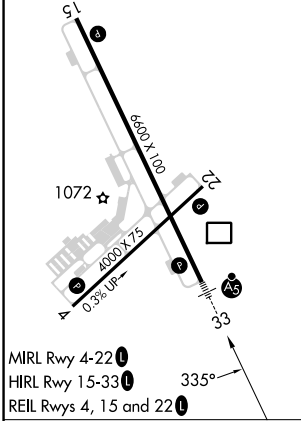
MANKATO RGNL (MKT)

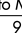


RNP APCH - GPS. MALSR  MISSED APPROACH: Climb to 1500 then climbing right turn to 2900 direct ANIMY and hold.

AWOS-3PT **118.175** MINNEAPOLIS CENTER **135.0 306.9** UNICOM **122.725 (CTAF) 0**

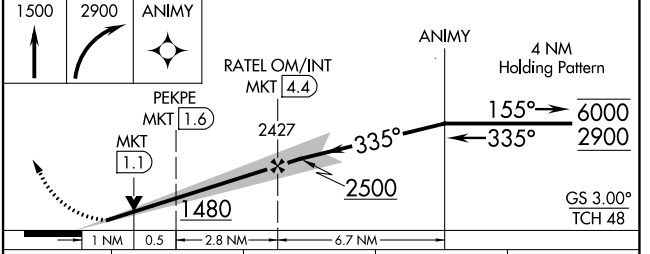


ELEV **1021** TDZE **1021**



MIRL Rwy 4-22 
 HIRL Rwy 15-33 
 REIL Rwys 4, 15 and 22 

FAF to MAP 4.3 NM					
Knots	60	90	120	150	180
Min:Sec	4:18	2:52	2:09	1:43	1:26



CATEGORY	A	B	C	D
S-ILS 33	1221-1/2 200 (200-1/2)			
S-LOC 33	1480-1/2	459 (500-1/2)	1480-7/8	459 (500-7/8)
CIRCLING	1480-1	459 (500-1)	1600-1/2	1600-2
			579 (600-1/2)	579 (600-2)
PEKPE FIX MINIMUMS*				
S-LOC 33	1380-1/2	359 (400-1/2)	1380-5/8	359 (400-5/8)
CIRCLING	1460-1	1480-1	1600-1/2	1600-2
	439 (500-1)	459 (500-1)	579 (600-1/2)	579 (600-2)

NC-1, 26 DEC 2024 to 23 JAN 2025

NC-1, 26 DEC 2024 to 23 JAN 2025