

KARRR SEVEN DEPARTURE (RNAV)
(KARRR7.KARRR) 29DEC22

BAYTOWN, TEXAS
BAYTOWN (HPY)

CTAF
122.8
HOUSTON DEP CON
134.45 284.0

RNAV-1 DME/DME/IRU or GPS.
RADAR required.

TOP ALTITUDE:
ASSIGNED BY ATC

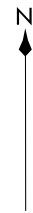
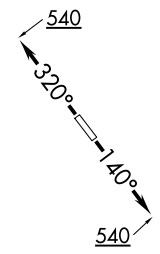
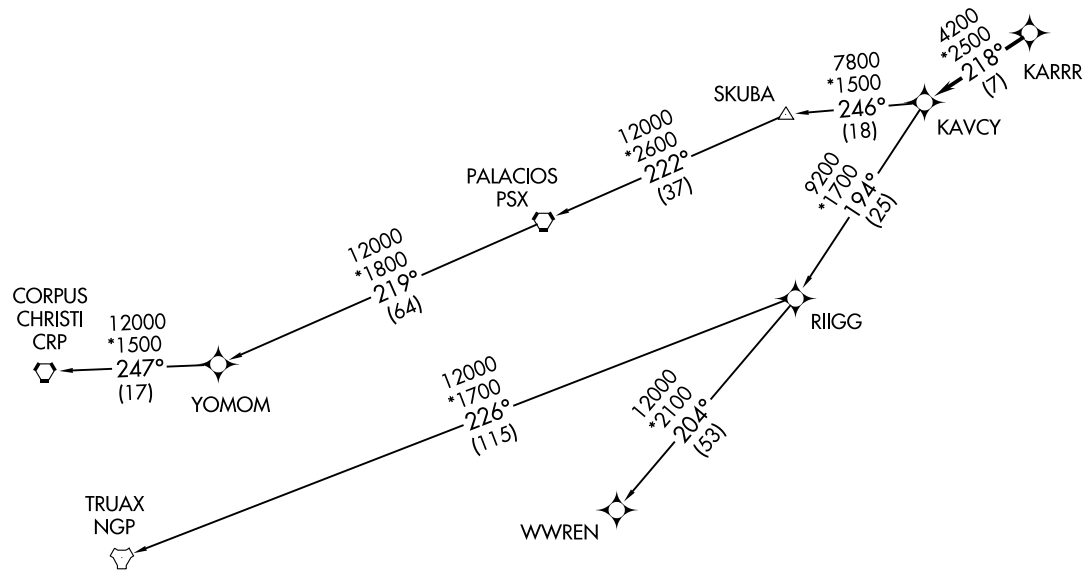
(KARRR7.KARRR) 22363
KARRR SEVEN DEPARTURE (RNAV)

AL-5757 (FAA)

BAYTOWN (HPY)
BAYTOWN, TEXAS

TAKEOFF MINIMUMS

Rwys 14, 32: Standard with minimum climb of 500' per NM to 540.



(NARRATIVE ON FOLLOWING PAGE)

NOTE: Chart not to scale.

KARRR SEVEN DEPARTURE (RNAV)



DEPARTURE ROUTE DESCRIPTION

TAKEOFF RUNWAY 14: Climb on heading 140° to 540, for RADAR vectors to KARRR, thence . . .

TAKEOFF RUNWAY 32: Climb on heading 320° to 540, for RADAR vectors to KARRR, thence . . .

. . . .on track 218° to KAVCY, then on (transition). Maintain ATC assigned altitude. Expect filed altitude 10 minutes after departure.

CORPUS CHRISTI TRANSITION (KARRR7.CRP)

PALACIOS TRANSITION (KARRR7.PSX)

TRUAX TRANSITION (KARRR7.NGP)

WWREN TRANSITION (KARRR7.WWREN)

YOMOM TRANSITION (KARRR7.YOMOM)

SC-5, 26 DEC 2024 to 23 JAN 2025

SC-5, 26 DEC 2024 to 23 JAN 2025