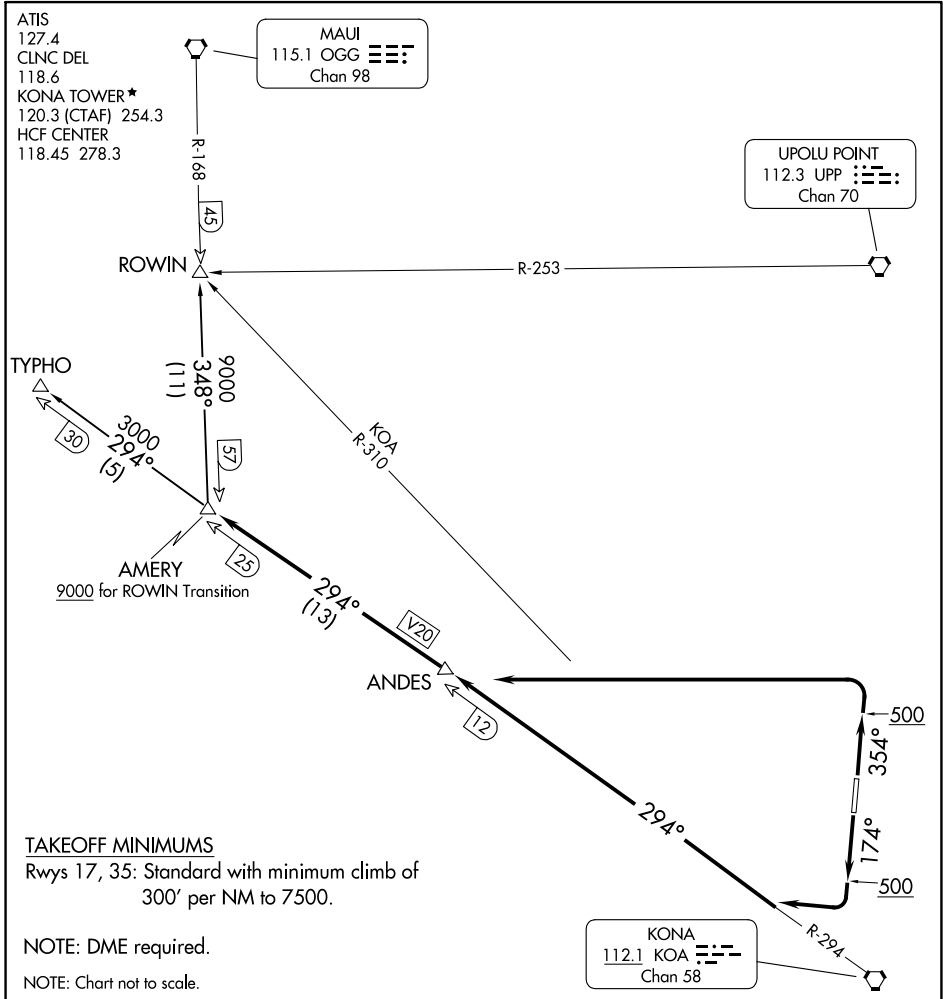


(AMERY4.AMERY) 24025

AMERY FOUR DEPARTURE

ELLISON ONIZUKA KONA INTL AT KEAHOLE (KOA) (PHKO)
AL-5761 (FAA) KAILUA-KONA, HAWAII



TAKEOFF MINIMUMS

Rwys 17, 35: Standard with minimum climb of 300' per NM to 7500.

NOTE: DME required.

NOTE: Chart not to scale.

DEPARTURE ROUTE DESCRIPTION

TAKEOFF RUNWAY 17: Climb heading 174° to 500, then climbing right turn to intercept KOA R-294 to AMERY INT, Thence. . . .

TAKEOFF RUNWAY 35: Climb heading 354° to 500, then climbing left turn to intercept KOA R-294 to AMERY INT, Thence. . . .

. . . .via transition.

ROWIN TRANSITION (AMERY4.ROWIN): From AMERY INT on OGG R-168 to ROWIN INT.

TYPHO TRANSITION (AMERY4.TYPHO): From AMERY INT on KOA R-294 to TYPHO INT.

AMERY FOUR DEPARTURE

(AMERY4.AMERY) 07DEC17

KAILUA-KONA, HAWAII
ELLISON ONIZUKA KONA INTL AT KEAHOLE (KOA) (PHKO)

PAC, 26 DEC 2024 to 20 FEB 2025

PAC, 26 DEC 2024 to 20 FEB 2025