

LOC/DME I-KOA <b>109.7</b> Chan 34	APP CRS <b>174°</b>	Rwy Idg <b>11000</b> TDZE <b>47</b> Apt Elev <b>47</b>
--	------------------------	--

# ILS or LOC RWY 17

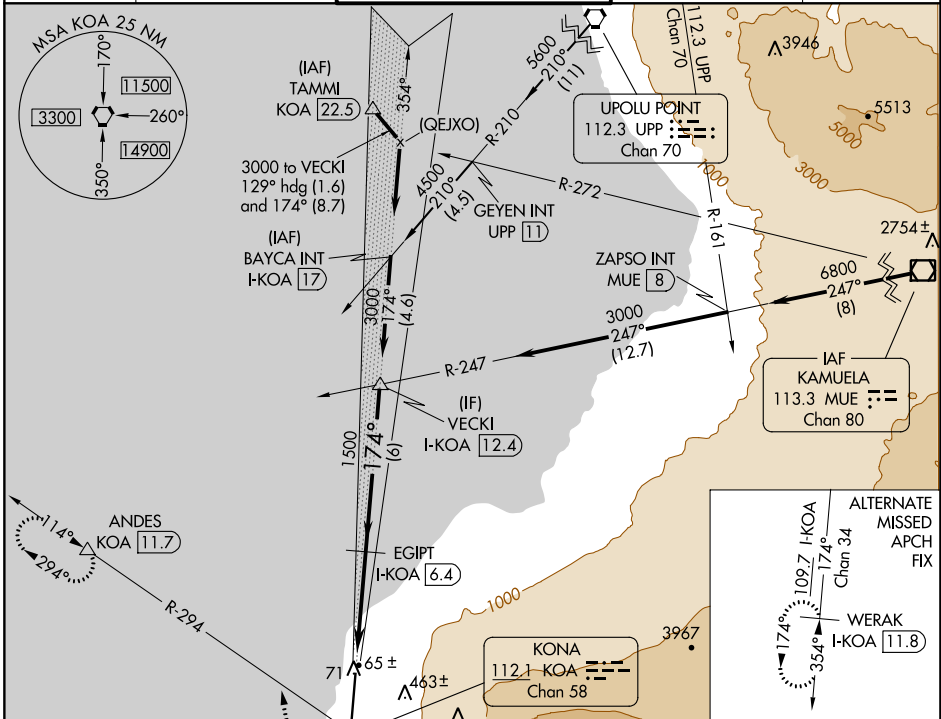
## ELLISON ONIZUKA KONA INTL AT KEAHOLE (KOA)(PHKO)

**⚠** For inoperative MALSR, increase S-ILS 17 Cat E visibility to 3/4 mile and S-LOC 17 Cats C, D, E visibility to 1 mile. Circling NA east of Rwy 17-35. Autopilot coupled approach NA below 415. DME required.

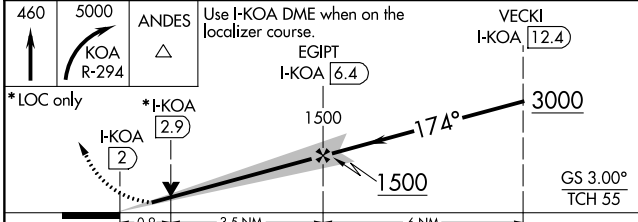


**MISSED APPROACH:** Climb to 460 then climbing right turn to 5000 on KOA VORTAC R-294 to ANDES/KOA VORTAC 11.7 DME and hold, continue climb-in-hold to 5000.

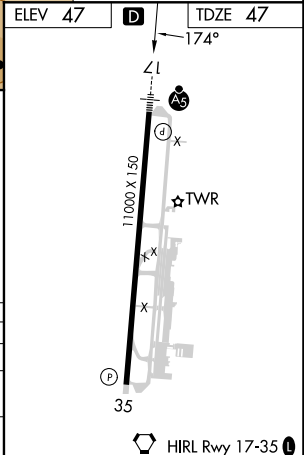
ATIS <b>127.4</b>	HCF CENTER <b>118.45 278.3</b>	KONA TOWER* <b>120.3(CTAF) 254.3</b>	GND CON <b>121.9</b>	CLNC DEL <b>118.6</b>
----------------------	-----------------------------------	---	-------------------------	--------------------------



LOCALIZER I-KOA Chan 34	ELEV 47	TDZE 47
-------------------------------	---------	---------



CATEGORY	A	B	C	D	E
S-ILS 17	247-1/2 200 (200-1/2)				
S-LOC 17	400-1/2	353 (400-1/2)	400-5/8 353 (400-5/8)		
<b>C</b> CIRCLING	520-1	473 (500-1)	520-1 1/2 473 (500-1 1/2)	600-2	553 (600-2)



PAC, 26 DEC 2024 to 20 FEB 2025

PAC, 26 DEC 2024 to 20 FEB 2025