

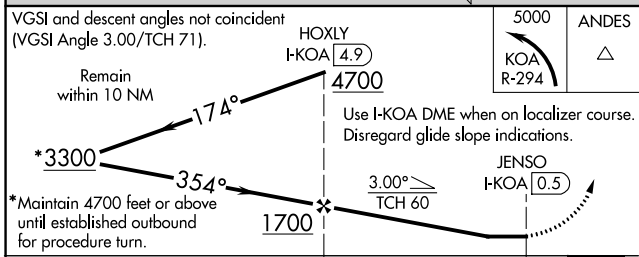
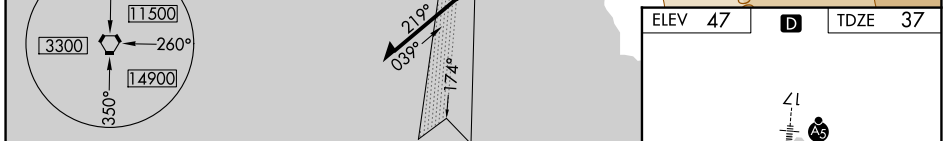
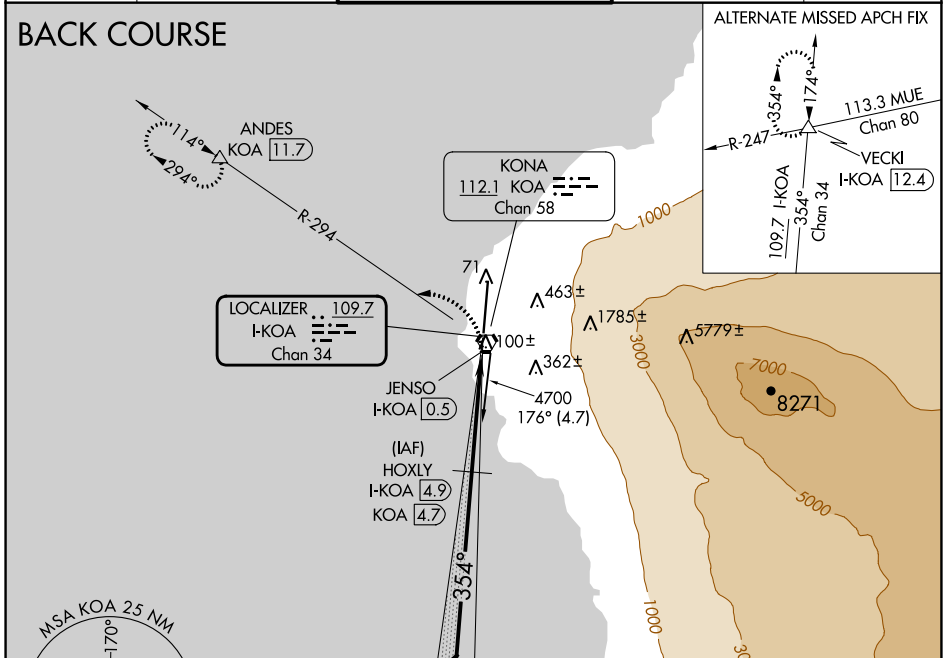
LOC/DME I-KOA <b>109.7</b> Chan <b>34</b>	APP CRS <b>354°</b>	Rwy Idg <b>11000</b> TDZE <b>37</b> Apt Elev <b>47</b>
---	------------------------	--

# LOC BC RWY 35

ELLISON ONIZUKA KONA INTL AT KEAHOLE (KOA) (PHKO)

**⚠** Circling NA east of Rwy 17-35.  
**⚠** MISSED APPROACH: Climbing left turn to 5000 on KOA VORTAC R-294 to ANDES/KOA VORTAC 11.7 DME and hold, continue climb-in-hold to 5000.

ATIS <b>127.4</b>	HCF CENTER <b>118.45 278.3</b>	KONA TOWER★ <b>120.3(CTAF) 254.3</b>	GND CON <b>121.9</b>	CLNC DEL <b>118.6</b>
----------------------	-----------------------------------	---	-------------------------	--------------------------



CATEGORY	A	B	C	D
S-35	460-1	423 (500-1)	460-1½ 423 (500-1½)	460-1½ 423 (500-1½)
<b>C</b> CIRCLING	520-1	473 (500-1)	520-1½ 473 (500-1½)	600-2 553 (600-2)

PAC, 26 DEC 2024 to 20 FEB 2025

PAC, 26 DEC 2024 to 20 FEB 2025