

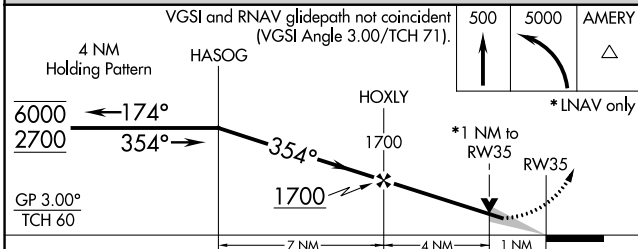
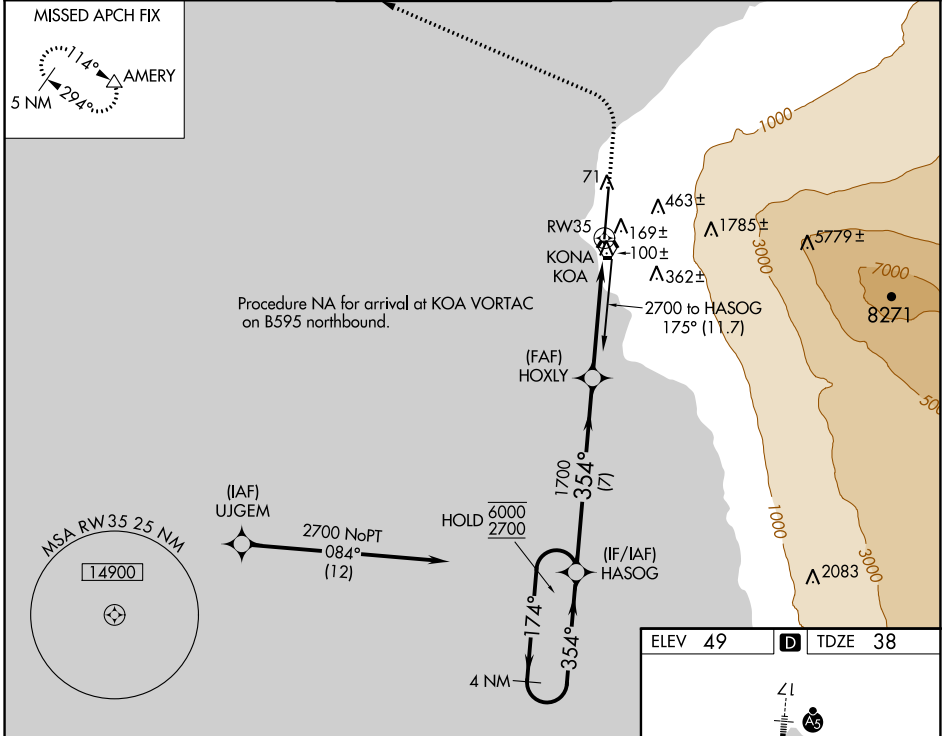
APP CRS 354°	Rwy Idg 11000 TDZE 38 Apt Elev 49
------------------------	--

RNAV (GPS) RWY 35

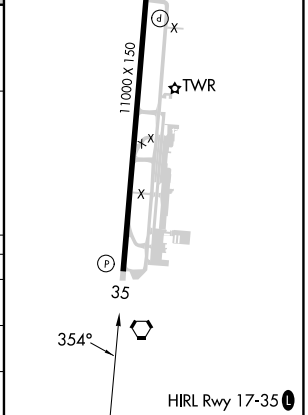
ELLISON ONIZUKA KONA INTL AT KEAHOLE (KOA) (PHKO)

RNP APCH - GPS.		MISSED APPROACH: Climb to 500 then climbing left turn to 5000 direct AMERY and hold.		
⚠ Circling NA east of Rwy 17-35. WAAS VNAV NA. For uncompensated Baro-VNAV systems, LNAV/VNAV NA below 17°C or above 54°C.				

ATIS 127.4	HCF CENTER 118.45 278.3	KONA TOWER★ 120.3 (CTAF) 254.3	GND CON 121.9	CLNC DEL 118.6
----------------------	-----------------------------------	--	-------------------------	--------------------------



ELEV 49	D TDZE 38
---------	------------------



CATEGORY	A	B	C	D	E
LNAV/ VNAV DA	366-1 328 (400-1)				
LNAV MDA	420-1 382 (400-1)	420-1½ 382 (400-1½)			
C CIRCLING	520-1 471 (500-1)	520-1½ 471 (500-1½)	600-2 551 (600-2)		

PAC, 26 DEC 2024 to 20 FEB 2025

PAC, 26 DEC 2024 to 20 FEB 2025