

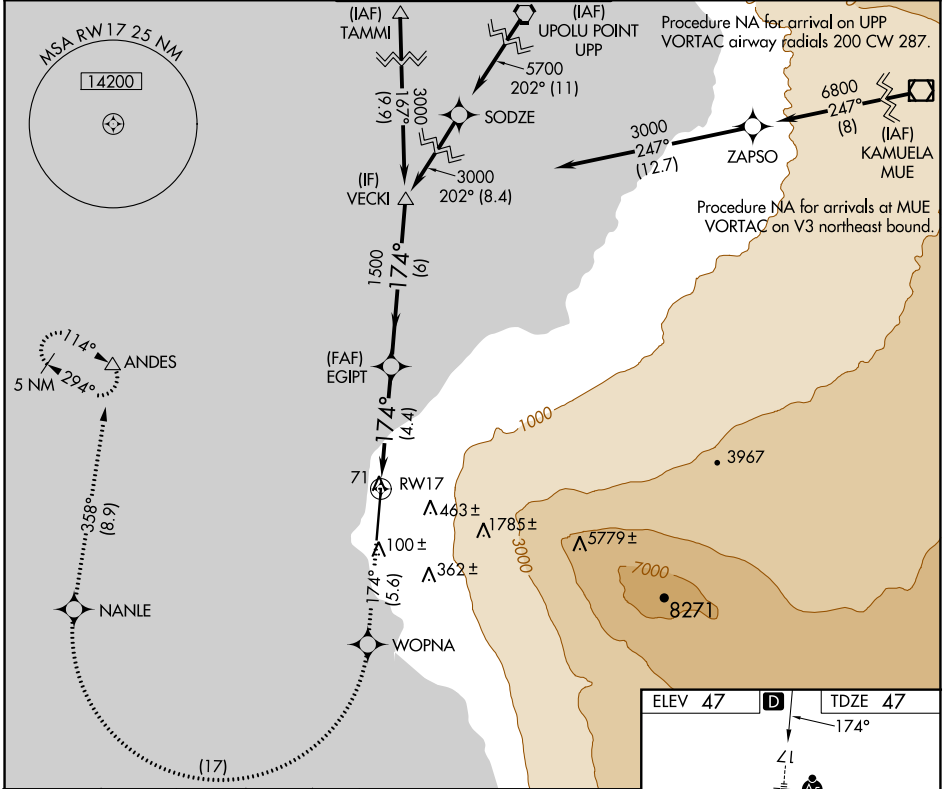
APP CRS	Rwy Idg <b>11000</b>
<b>174°</b>	TDZE <b>47</b>
	Apt Elev <b>47</b>

# RNAV (RNP) Z RWY 17

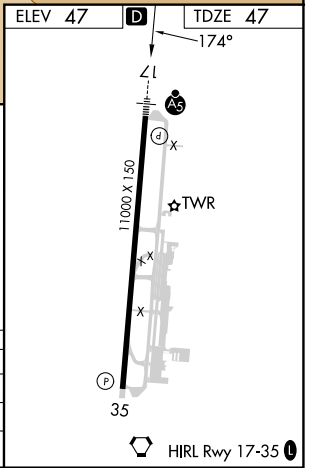
ELLISON ONIZUKA KONA INTL AT KEAHOLE (KOA) (PHKO)

<p><b>V</b> For uncompensated Baro-VNAV systems, procedure NA below 6°C (43°F) or above 48°C (119°F). RF required. GPS required. For inop ALS, increase RNP 0.30 all Cats visibility to 1½ mile.</p>	<p>MALSR</p>	<p>MISSED APPROACH: Climb to 5000 on track 174° to WOPNA and right turn to NANLE, and on track 358° to ANDES and hold.</p>

ATIS <b>127.4</b>	HCF CENTER <b>118.45 278.3</b>	KONA TOWER★ <b>120.3 (CTAF) 254.3</b>	GND CON <b>121.9</b>	CLNC DEL <b>118.6</b>
----------------------	-----------------------------------	--	-------------------------	--------------------------



5000	↑	tr 174°	WOPNA	↪	NANLE	tr 358°	ANDES	△	VECKI
									3000
			EGIPT						1500
									1500
									GP 3.00° TCH 55
									4.4 NM
									6 NM
CATEGORY		A	B	C	D				
RNP 0.17 DA			297-¾	250 (300-¾)					
RNP 0.30 DA			484-1	437 (500-1)					
<b>AUTHORIZATION REQUIRED</b>									



PAC, 26 DEC 2024 to 20 FEB 2025

PAC, 26 DEC 2024 to 20 FEB 2025