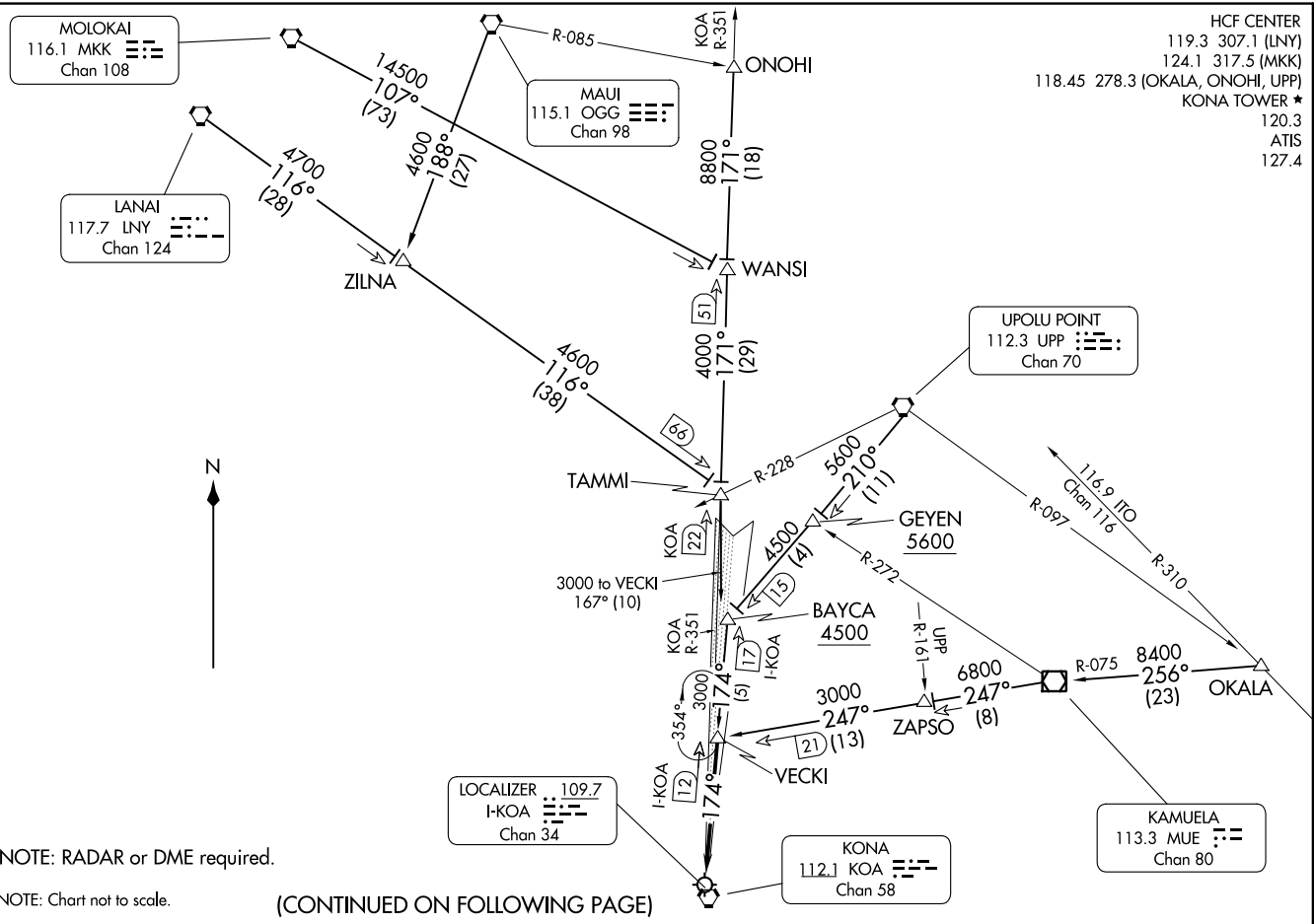


(VECKI, VECKI9) 24025
VECKI NINE ARRIVAL

ELIUSON ONIZUKA KONA INTL AT KEAHOLE (KOA) (PHKO)
 KAILUA/KONA, HAWAII
 AL-5761 (FAA)

HCF CENTER
 119.3 307.1 (LNY)
 124.1 317.5 (MKK)
 118.45 278.3 (OKALA, ONOHI, UPP)
 KONA TOWER ★
 120.3
 ATIS
 127.4



LOCALIZER
 I-KOA 109.7
 Chan 34

KONA
 112.1 KOA
 Chan 58

KAMUELA
 113.3 MUE
 Chan 80

MAUI
 115.1 OGG
 Chan 98

MOLOKAI
 116.1 MKK
 Chan 108

LANAI
 117.7 LNY
 Chan 124

UPOLU POINT
 112.3 UPP
 Chan 70

NOTE: RADAR or DME required.

NOTE: Chart not to scale.

(CONTINUED ON FOLLOWING PAGE)

VECKI NINE ARRIVAL
 (VECKI, VECKI9) 07DEC17

ELIUSON ONIZUKA KONA INTL AT KEAHOLE (KOA) (PHKO)
 KAILUA/KONA, HAWAII

VECKI NINE ARRIVAL

ARRIVAL ROUTE DESCRIPTION

LANAI TRANSITION (LNY.VECKI9): From over LNY VORTAC on LNY R-116 to TAMMI , then on heading 167° to VECKI . Thence

MAUI TRANSITION (OGG.VECKI9): From over OGG VORTAC on OGG R-188 to ZILNA , then on LNY R-116 to TAMMI , then on heading 167° to VECKI . Thence

MOLOKAI TRANSITION (MKK.VECKI9): From over MKK VORTAC on MKK R-107 to WANSI , then on KOA R-351 to TAMMI , then on heading 167° to VECKI . Thence

OKALA TRANSITION (OKALA.VECKI9): From over OKALA on MUE VOR/DME R-075 to MUE VOR/DME, then on MUE R-247 to VECKI . Thence

ONOHI TRANSITION (ONOHI.VECKI9): From over ONOHI on KOA R-351 to TAMMI , then on heading 167° to VECKI . Thence

UPOLU POINT TRANSITION (UPP.VECKI9): From over UPP VORTAC on UPP R-210 to BAYCA , then on I-KOA 174° course to VECKI . Thence

. . . . from over VECKI INT on I-KOA localizer course to Ellison Onizuka Kona Intl at Keahole.

LOST COMMUNICATIONS: At VECKI INT proceed with ILS or LOC/DME RWY 17 approach.

PAC, 26 DEC 2024 to 20 FEB 2025

PAC, 26 DEC 2024 to 20 FEB 2025