

APP CRS	Rwy Idg	4100
330°	TDZE	1215
	Apt Elev	1231

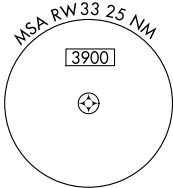
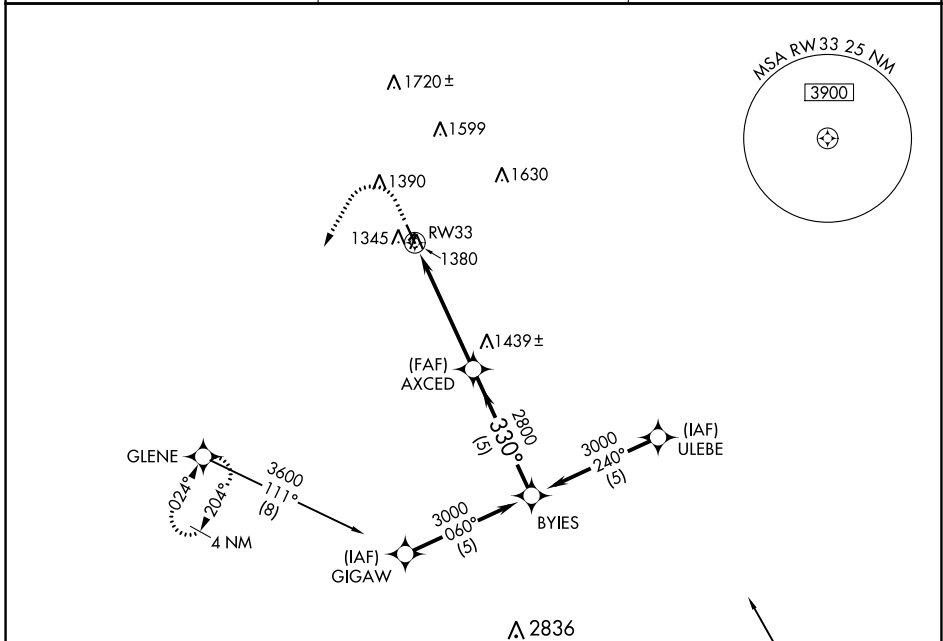
GPS RWY 33

HARLAN MUNI (HNR)

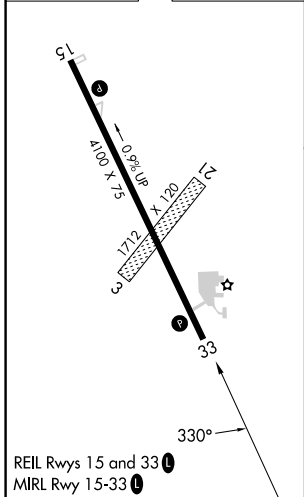
NA Procedure NA at night. Helicopter visibility reduction below 1 SM NA. Circling NA to Rwy 3 and 21.

MISSED APPROACH: Climb to 2000, then climbing left turn to 3600 direct GLENE and hold.

AWOS-3 118.325	OMAHA APP CON 124.5 263.0	UNICOM 122.8 (CTAF)
--------------------------	-------------------------------------	-------------------------------



ELEV 1231	TDZE 1215
-----------	-----------



2000	3600	GLENE	VGSI and descent angles not coincident (VGSI Angle 3.00/TCH 40).
↑	↶	✧	
RW33		AXCED	BYIES
5 NM		2800	3000
5 NM		Procedure Turn NA	
CATEGORY	A	B	C
S-33	1640-1	425 (500-1)	NA
CIRCLING	1780-1	549 (600-1)	NA