

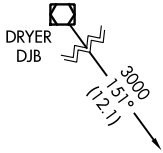
APP CRS	Rwy Idg	<b>3556</b>
<b>091°</b>	TDZE	<b>1179</b>
	Apt Elev	<b>1190</b>

# RNAV (GPS) RWY 9

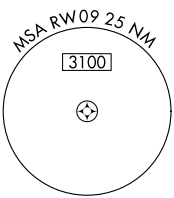
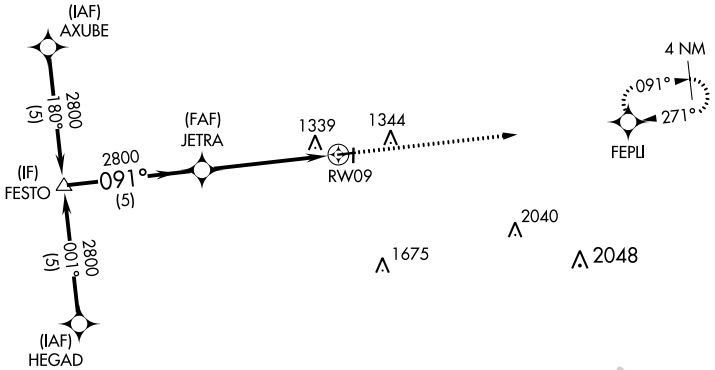
MEDINA MUNI (1G5)

RNP APCH.	<p>Procedure NA at night.</p> <p>Procedure NA for arrival on DJB VOR/DME airway radials 074 CW 219.</p>	MISSED APPROACH: Climb to 2800 direct FEPLI and hold.
-----------	---	---

CLE ASOS <b>127.85</b>	CLEVELAND APP CON <b>125.35 346.325</b>	UNICOM <b>123.0 (CTAF) 0</b>
---------------------------	--	---------------------------------

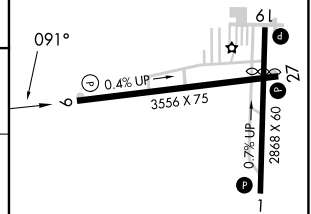
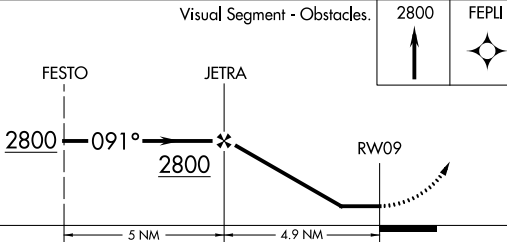


Procedure NA for arrival on DJB VOR/DME airway radials 074 CW 219.



ELEV 1190	TDZE 1179
-----------	-----------

Visual Segment - Obstacles.



CATEGORY	A	B	C	D
LNAV MDA	1700-1	521 (600-1)	1700-1½ 521 (600-1½)	NA

REIL Rwy 27 0  
MIRL Rwy 9-27 and 1-19 0