

VOR/DME ACO 114.4 Chan 91	APP CRS 278°	Rwy Idg 3556 TDZE 1183 Apt Elev 1190
-----------------------------------------------	------------------------	-----------------------------------------------------------------

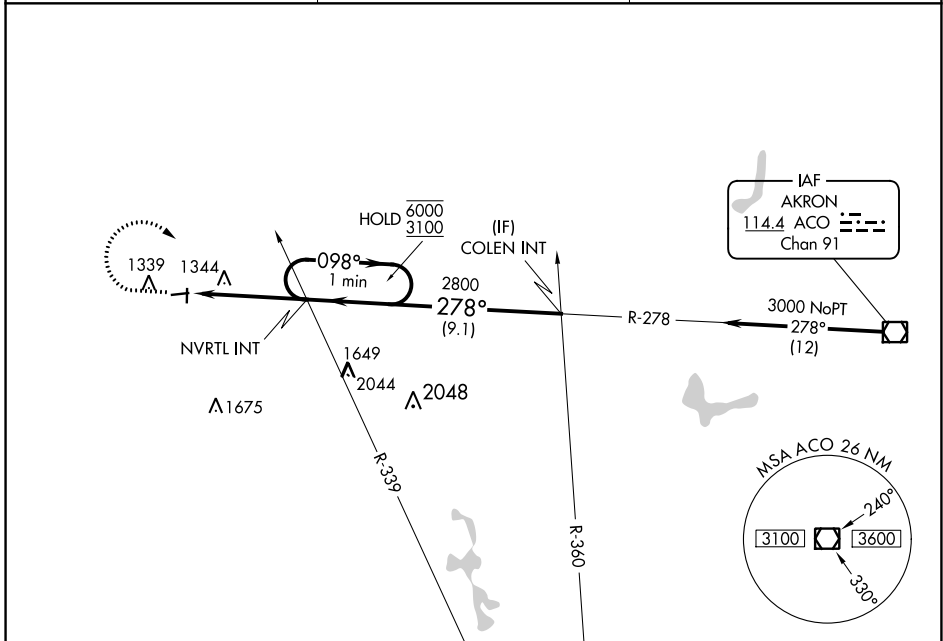
VOR RWY 27

MEDINA MUNI (1G5)

⚠ Rwy 27 helicopter visibility reduction below 3/4 SM NA.
⚠ NA Circling Rwy 1, 9, 19 NA at night. Use Cleveland-Hopkins Intl altimeter setting.

MISSED APPROACH: Climb to 2000 then climbing right turn to 3100 on ACO VOR/DME R-278 to NVRTL INT and hold, continue climb-in-hold to 3100.

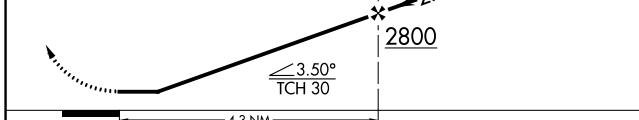
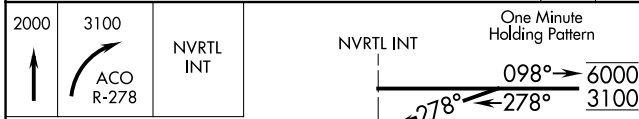
CLE ASOS 127.85	CLEVELAND APP CON 125.35 346.325	UNICOM 123.0 (CTAF) 0
---------------------------	--------------------------------------------	---------------------------------



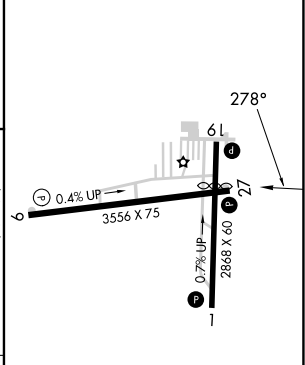
EC-2, 26 DEC 2024 to 23 JAN 2025

EC-2, 26 DEC 2024 to 23 JAN 2025

ELEV 1190	TDZE 1183
-----------	-----------



ELEV 1190	TDZE 1183
-----------	-----------



CATEGORY	A	B	C	D
S-27	1780-1	597 (600-1)	1780-1 3/4 597 (600-1 3/4)	NA
C CIRCLING	1780-1	590 (600-1)	1780-1 3/4 590 (600-1 3/4)	NA

REIL RWY 27	MIRA RWY 9-27, 1-19
FAF to MAP 4.3 NM	
Knots	60 90 120 150 180
Min:Sec	4:18 2:52 2:09 1:43 1:26