

APP CRS 278°	Rwy Idg TDZE Apt Elev	5003 806 806
------------------------	-----------------------------	---

RNAV (GPS) RWY 28

HUNTINGTON MUNI (HHG)

RNP APCH - GPS.

⚠ Rwy 28 helicopter visibility reduction below 3/4 SM NA.

MISSED APPROACH: Climb to 1700 then climbing right turn to 2600 direct IDXOH and hold.

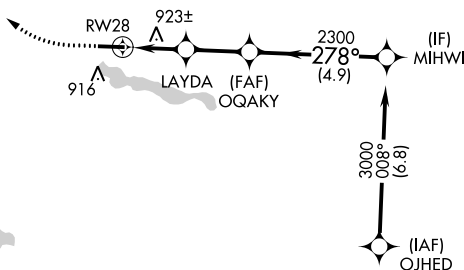
AWOS-3PT
126.575

FORT WAYNE APP CON
127.2 284.6

UNICOM
122.8 (CTAF) 0

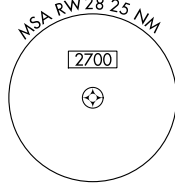


△ 1182

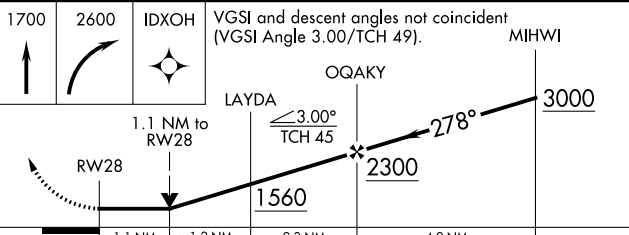
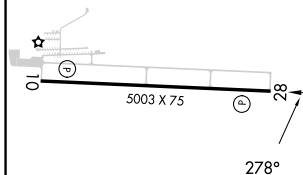


△ 1397

Procedure NA for arrivals at AJAYS on V221 southbound.



ELEV 806	TDZE 806
----------	----------



CATEGORY	A	B	C	D
LNAV MDA	1200-1	394 (400-1)	1200-1½	394 (400-1½)
C CIRCLING	1300-1	494 (500-1)	1460-1¾ 654 (700-1¾)	1540-2¼ 734 (800-2¼)

MIRL Rwy 10-28 **0**
REIL Rwys 10 and 28 **0**

EC-2, 26 DEC 2024 to 23 JAN 2025

EC-2, 26 DEC 2024 to 23 JAN 2025