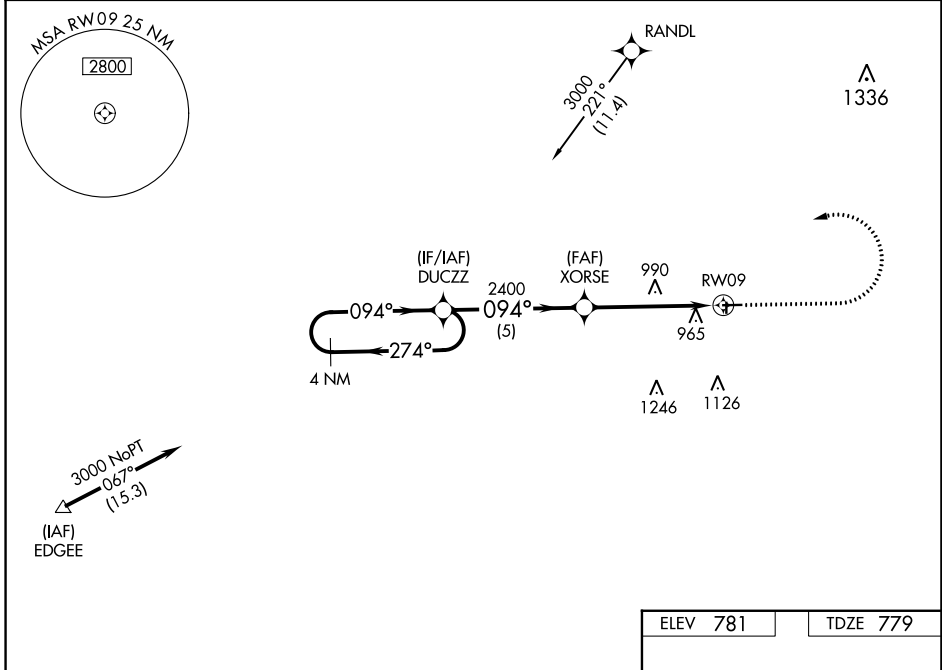


WAAS CH 93828 W09A	APP CRS 094°	Rwy Idg TDZE Apt Elev	3882 779 781
--	------------------------	-----------------------------	---

RNAV (GPS) RWY 9
FULTON COUNTY (USE)

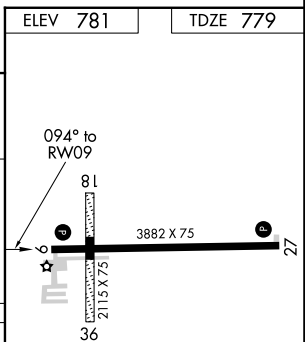
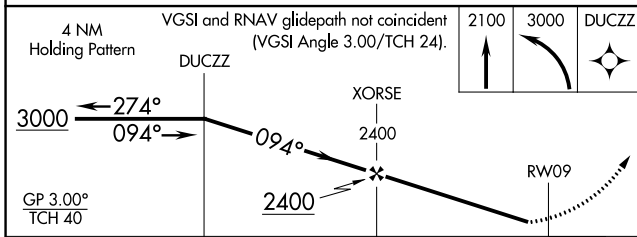
RNP APCH - GPS.	MISSED APPROACH: Climb to 2100 then climbing left turn to 3000 direct DUCZZ and hold.
<p>▼ For uncompensated Baro-VNAV systems, LNAV/VNAV NA below -16°C or above 54°C. Circling NA to Rwy 18 and 36. Rwy 9 helicopter visibility reduction below 1 SM NA. Procedure NA at night.</p>	

AWOS-3P 127.375	TOLEDO APP CON 134.35 317.55	UNICOM 123.0 (CTAF) 0
---------------------------	--	---------------------------------



EC-2, 26 DEC 2024 to 23 JAN 2025

EC-2, 26 DEC 2024 to 23 JAN 2025



CATEGORY	A	B	C	D
LPV DA	1109-1		330 (400-1)	
LNAV/VNAV DA	1198-1½		419 (500-1½)	
LNAV MDA	1300-1	521 (600-1)	1300-1½	521 (600-1½)
CIRCLING	1320-1	539 (600-1)	1480-2 699 (700-2)	1480-2¼ 699 (700-2¼)

REIL Rwy 9 and 27 0
MIRL Rwy 9-27 0