

WAAS CH 77733 W35A	APP CRS 348°	Rwy Idg TDZE Apt Elev	4990 159 162
--	------------------------	-----------------------------	---

RNAV (GPS) RWY 35

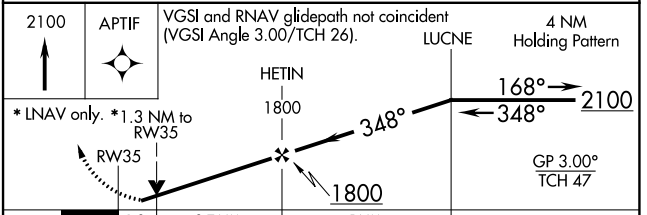
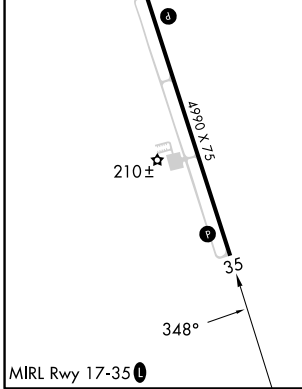
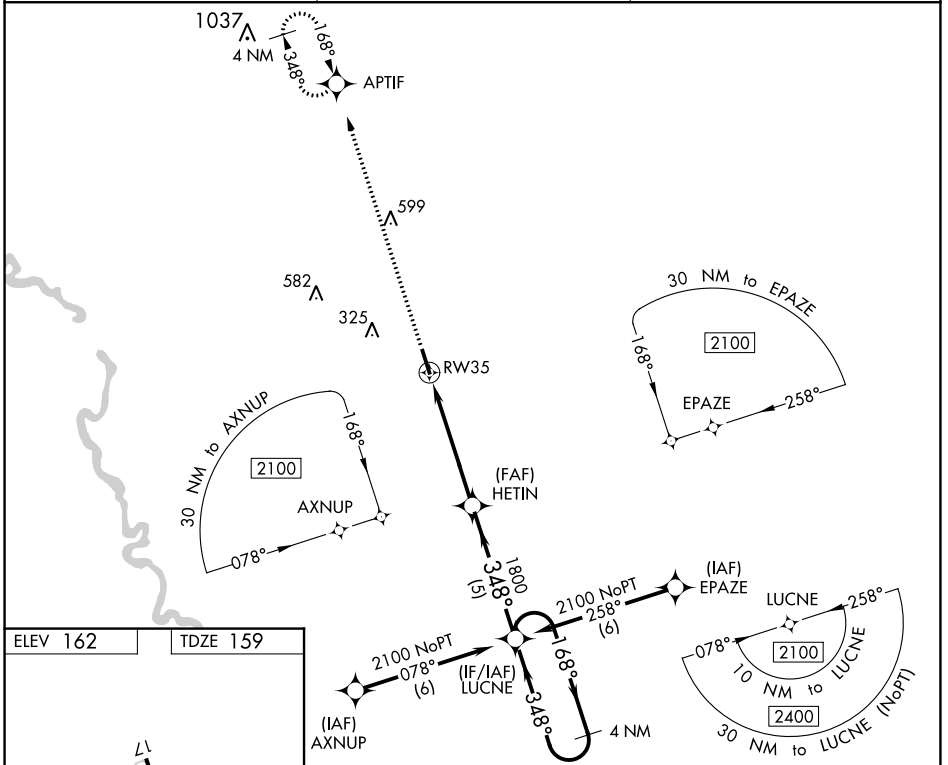
ALLENDALE COUNTY (A.Q.X)

RNP APCH.

▼ For uncompensated Baro-VNAV systems, LNAV/VNAV NA below -15°C or above 54°C. When local altimeter setting not received, use Augusta Rgnl at Bush Fld altimeter setting and increase all DA 99 feet and all MDA 100 feet, increase LPV, LNAV/VNAV all Cats visibility 3/8 mile. Baro-VNAV and VDP NA when using Augusta Rgnl at Bush Fld altimeter setting.

MISSED APPROACH: Climb to 2100 direct APTIF and hold.

AWOS-3PT 118.95	JACKSONVILLE CENTER 132.925 363.2	UNICOM 122.8 (CTAF)
---------------------------	---	-------------------------------



CATEGORY	A	B	C	D
LPV DA	409-1	250 (300-1)		NA
LNAV/VNAV DA	591-1½	432 (500-1½)		NA
LNAV MDA	600-1	441 (500-1)		NA
CIRCLING	620-1	640-1		NA
	458 (500-1)	478 (500-1)		NA

SE-2, 26 DEC 2024 to 23 JAN 2025

SE-2, 26 DEC 2024 to 23 JAN 2025