

WAAS CH 87013 W18A	APP CRS 177°	Rwy ldg TDZE Apt Elev	5500 213 213
----------------------------------------	------------------------	-----------------------------	-----------------------------------------

RNAV (GPS) RWY 18

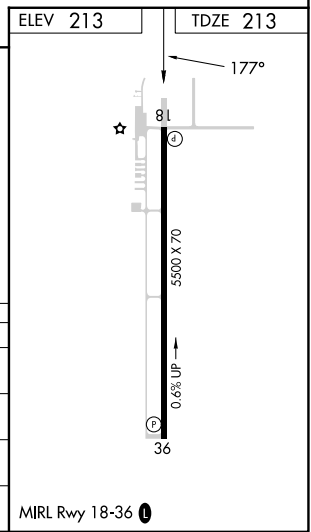
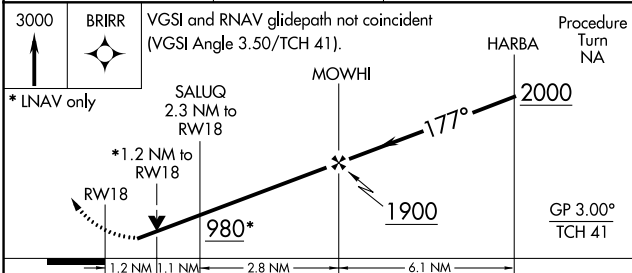
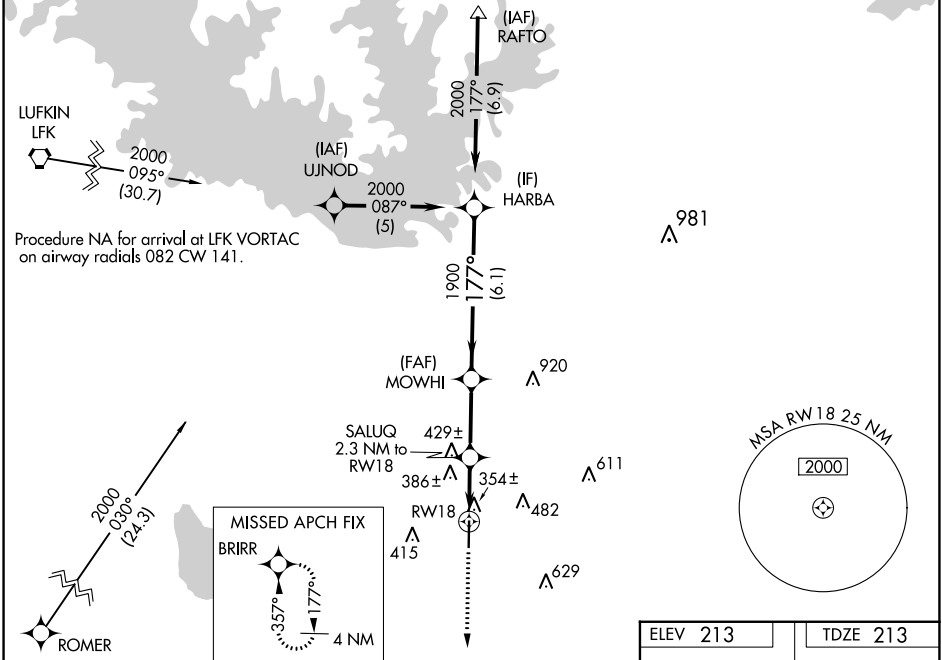
JASPER COUNTY/BELL FLD (JAS)

RNP APCH-GPS.

⚠ Baro-VNAV NA when using De Ridder altimeter setting. For uncompensated Baro-VNAV systems, LNAV/VNAV NA below -15°C or above 54°C. Rwy 18 helicopter visibility reduction below ¼ SM NA. VDP NA when using De Ridder altimeter setting. When local altimeter setting not received, use De Ridder altimeter setting and increase LPV DA to 654 feet and all visibilities ¾ SM. Increase LNAV/VNAV DA to 817 feet and all visibilities ¾ SM. Increase all MDAs 100 feet and LNAV visibility Cat C ½ SM, and Circling visibility Cat C ½ SM.

MISSED APPROACH:
Climb to 3000
direct BRIRR
and hold.

AWOS-3 118.375	HOUSTON CENTER 126.95 363.05	UNICOM 122.8 (CTAF) ⓪
--------------------------	----------------------------------------	----------------------------------------



CATEGORY	A	B	C	D
LPV DA	567-1	354 (400-1)		NA
LNAV/VNAV DA	730-1 3/8	517 (600-1 3/8)		NA
LNAV MDA	700-1 487 (500-1)		700-1 3/8 487 (500-1 3/8)	NA
CIRCLING	740-1 527 (600-1)		800-1 1/2 587 (600-1 1/2)	NA

SC-5, 26 DEC 2024 to 23 JAN 2025

SC-5, 26 DEC 2024 to 23 JAN 2025