

| | | | |
|--|------------------------|-----------------------------|---------------------------------------|
| WAAS CH 86229 W18A | APP CRS 179° | Rwy Idg TDZE Apt Elev | 5849 71 75 |
|--|------------------------|-----------------------------|---------------------------------------|

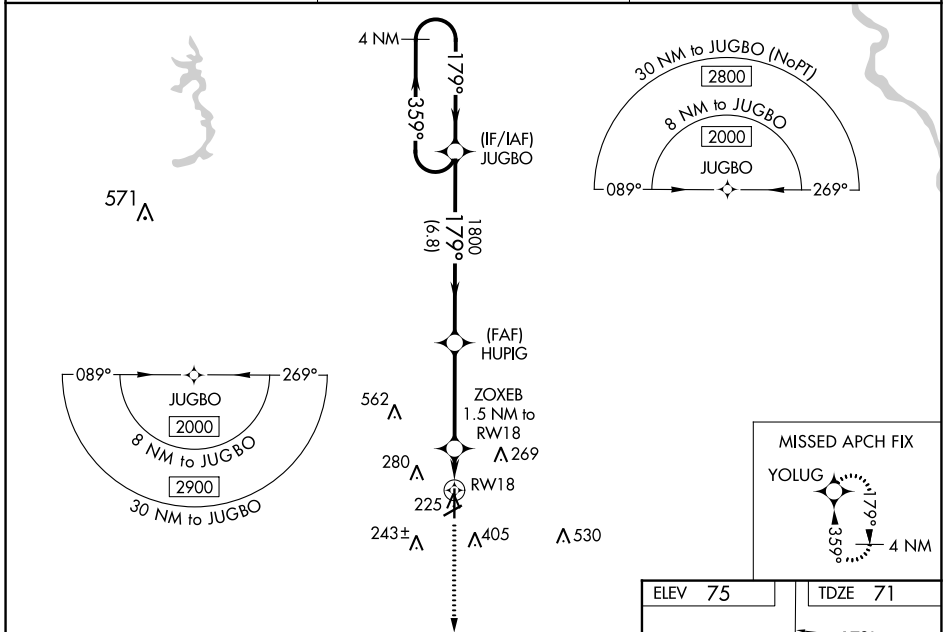
RNAV (GPS) RWY 18

ST LANDRY PARISH (OPL)

⚠ NA Baro-VNAV NA when using Lafayette altimeter setting. For uncompensated Baro-VNAV systems, LNAV/VNAV NA below -15°C (5°F) or above 43°C (109°F). When VGSI inop, Straight-in/Circling Rwy 18 procedure NA at night. DME/DME RNP-0.3 NA. Helicopter visibility reduction below 1 SM NA. Circling to Rwy 6/24 NA at night. When local altimeter setting not received, use Lafayette altimeter setting: Increase LPV DA to 377 feet, LNAV/VNAV DA to 442 feet, and visibility LNAV/VNAV all Cats ¼ SM; increase all MDA 60 feet and visibility LNAV Cat C and D and Circling Cat C and D ¼ SM.

MISSED APPROACH: Climb to 2300 direct YOLUG and hold.

| | | |
|----------------------------|---|---------------------------------|
| AWOS-3PT 118.775 | LAFAYETTE APP CON ★ 128.7 268.7 | UNICOM 123.0 (CTAF) 0 |
|----------------------------|---|---------------------------------|



4 NM Holding Pattern

VGSI and RNAV glidepath not coincident (VGSI Angle 3.50/TCH 58).

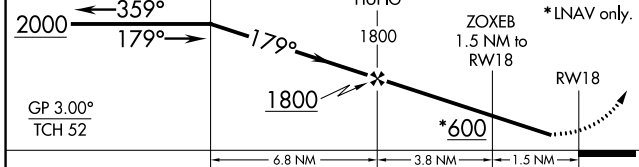
2300 YOLUG

JUGBO HUPIG ZOXEB RWY 18

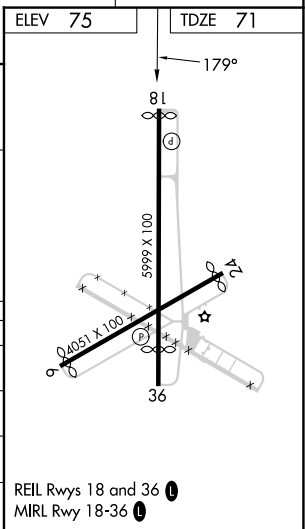
2000 179° 359° 1800 179° 1800 600 1.5 NM to RWY 18

GP 3.00° TCH 52

*LNAV only.



| CATEGORY | A | B | C | D |
|--------------|-------|-------------|-------------|------------------------|
| LPV DA | | 321-1 | 250 (300-1) | |
| LNAV/VNAV DA | | 386-1 | 315 (400-1) | |
| LNAV MDA | 480-1 | 409 (500-1) | 480-1½ | 409 (500-1½) |
| CIRCLING | 780-1 | 705 (800-1) | 780-2 | 920-2¾ 845 (900-2¾) |



SC-4, 26 DEC 2024 to 23 JAN 2025

SC-4, 26 DEC 2024 to 23 JAN 2025