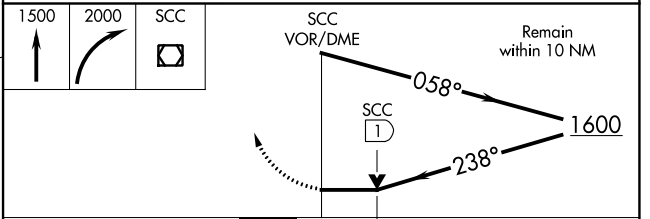
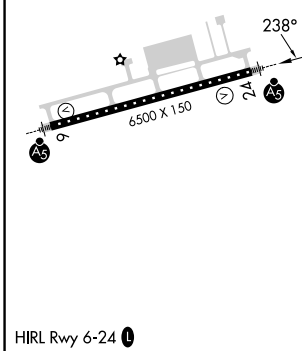
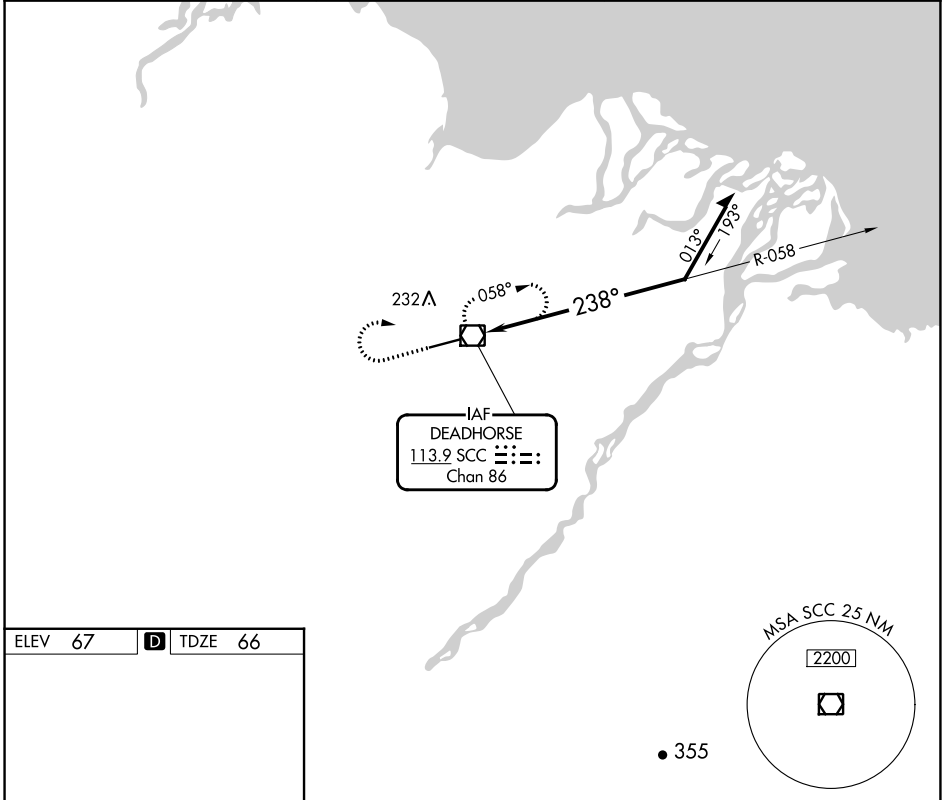


VOR/DME SCC	APP CRS	Rwy Idg	6500
113.9	238°	TDZE	66
Chan 86		Apt Elev	67

VOR Y RWY 24

DEADHORSE (SCC) (PASC)

	MALSR	MISSED APPROACH: Climb to 1500 then climbing right turn to 2000 direct SCC VOR/DME and hold, continue climb-in-hold to 2000.
	AFIS 118.4	ANCHORAGE CENTER 134.4 370.9



CATEGORY	A	B	C	D
S-24	580/24	514 (600-1/2)	580/55	514 (600-1)
C CIRCLING	580-1	513 (600-1)	580-1 1/2 513 (600-1 1/2)	620-2 553 (600-2)

AK, 26 DEC 2024 to 20 FEB 2025

AK, 26 DEC 2024 to 20 FEB 2025