

WAKEFIELD, VIRGINIA

AL-5781 (FAA)

23278

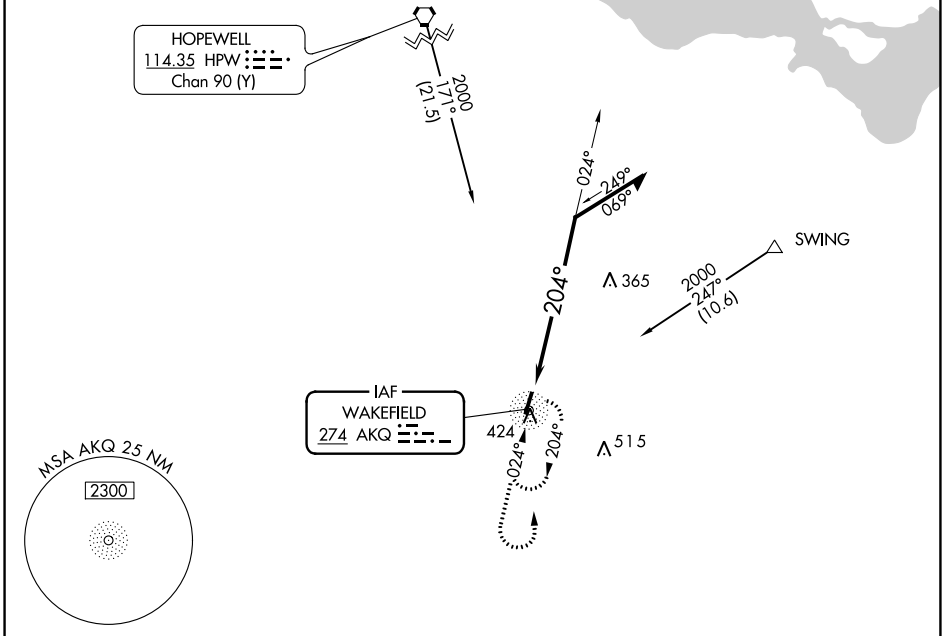
NDB AKQ	APP CRS	Rwy Idg	<b>3866</b>
<b>274</b>	<b>204°</b>	TDZE	<b>110</b>
		Apt Elev	<b>111</b>

# NDB RWY 20

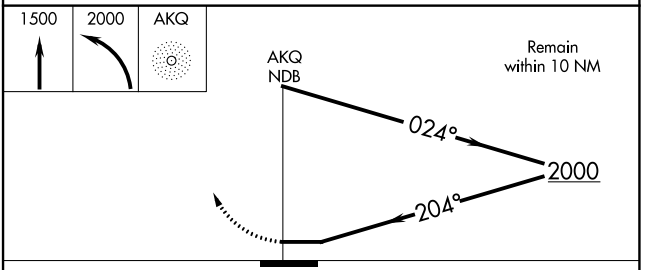
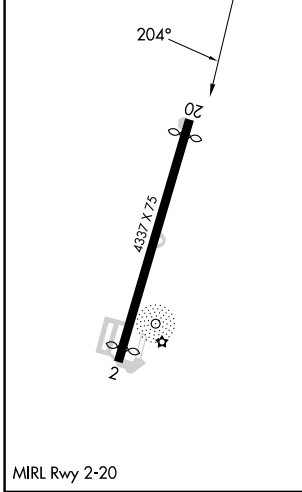
WAKEFIELD MUNI (AKQ)

<b>▼</b> <b>▲</b> NA	Procedure NA at night.	MISSED APPROACH: Climb to 1500 then climbing left turn to 2000 direct AKQ NDB and hold.
-------------------------	------------------------	---

ASOS <b>128.325</b>	NORFOLK APP CON <b>127.9 269.425</b>	UNICOM <b>122.8</b> (CTAF)
------------------------	---	-------------------------------



ELEV 111	TDZE 110
----------	----------



CATEGORY	A	B	C	D
S-20		1120-3	1010 (1100-3)	
<b>C</b> CIRCLING		1120-3	1009 (1100-3)	

WAKEFIELD, VIRGINIA  
Amdt 5 17AUG17

36°59'N-77°00'W

WAKEFIELD MUNI (AKQ)  
**NDB RWY 20**

NE-3, 26 DEC 2024 to 23 JAN 2025

NE-3, 26 DEC 2024 to 23 JAN 2025