

WAAS CH 53720 W06A	APP CRS 060°	Rwy Idg 5008 TDZE 142 Apt Elev 144
--	------------------------	---

RNAV (GPS) RWY 6

CLINTON-SAMPSON COUNTY (CTZ)

RNP APCH - GPS.

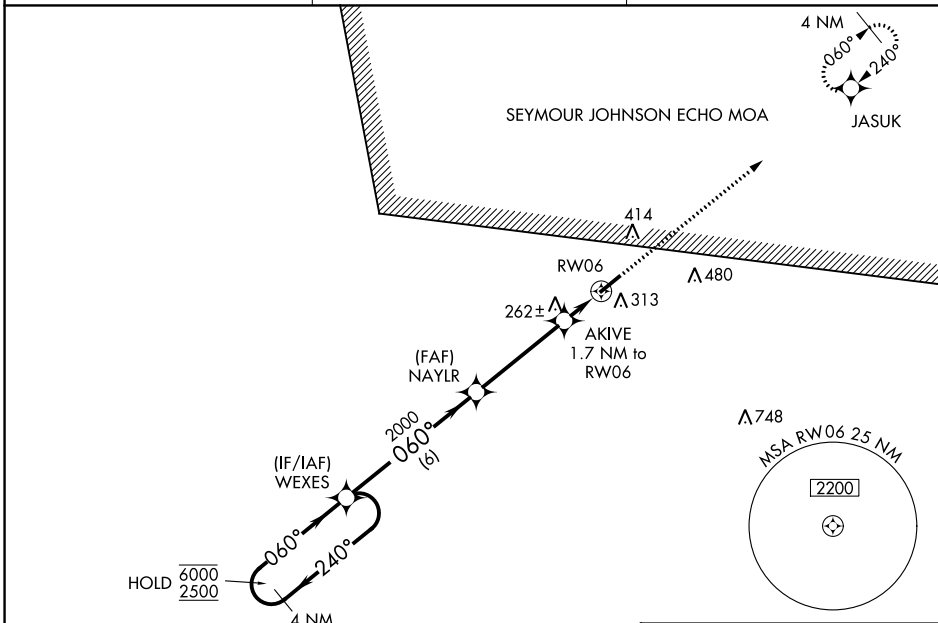
⚠ Rwy 6 helicopter visibility reduction below 3/4 SM NA.
For uncompensated Baro-VNAV systems, LNAV/VNAV NA below -15°C or above 54°C.

MISSED APPROACH:
Climb to 2500 direct JASUK and hold.

AWOS-3
119.125

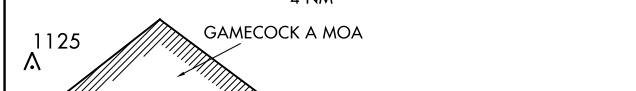
FAYETTEVILLE APP CON
133.0 290.25

UNICOM
122.8 (CTAF) 0

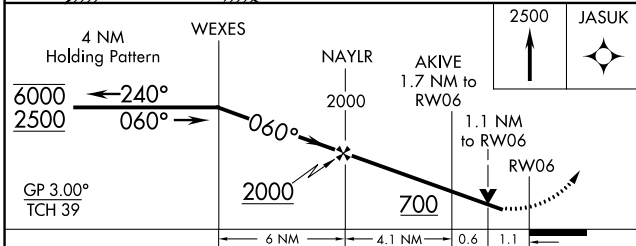


SE-2, 26 DEC 2024 to 23 JAN 2025

SE-2, 26 DEC 2024 to 23 JAN 2025



ELEV 144	TDZE 142
-----------------	-----------------



CATEGORY	A	B	C	D
LPV DA		392-3/4	250 (300-3/4)	
LNAV/VNAV DA		545-1 1/8	403 (500-1 1/8)	
LNAV MDA		520-1	378 (400-1)	
CIRCLING	680-1	780-1	840-2	840-2 1/4
	536 (600-1)	636 (700-1)	696 (700-2)	696 (700-2 1/4)

