

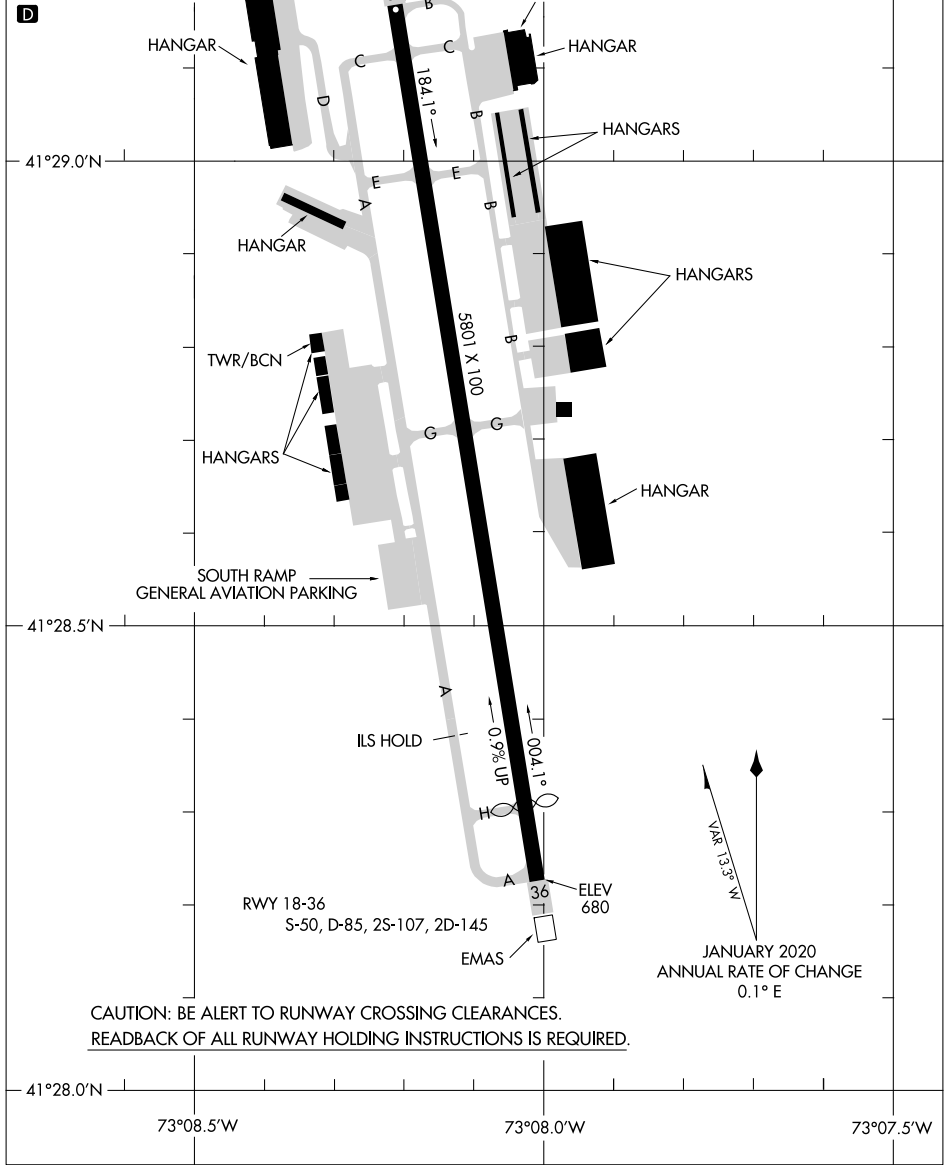
24305

# AIRPORT DIAGRAM

AL-5785 (FAA)

WATERBURY-OXFORD (OXC)  
OXFORD, CONNECTICUT

ATIS  
 132.975  
 OXFORD TOWER ★  
 118.475  
 GND CON  
 121.65  
 CLNC DEL  
 121.65  
 135.1 (When Tower Closed)



CAUTION: BE ALERT TO RUNWAY CROSSING CLEARANCES.  
 READBACK OF ALL RUNWAY HOLDING INSTRUCTIONS IS REQUIRED.

# AIRPORT DIAGRAM

24305

OXFORD, CONNECTICUT  
WATERBURY-OXFORD (OXC)

NE-1, 26 DEC 2024 to 23 JAN 2025

NE-1, 26 DEC 2024 to 23 JAN 2025