

WAAS CH <b>45717</b> <b>W20A</b>	APP CRS <b>202°</b>	Rwy Idg TDZE Apt Elev	<b>6450</b> <b>874</b> <b>874</b>
--	------------------------	-----------------------------	---

# RNAV (GPS) RWY 20

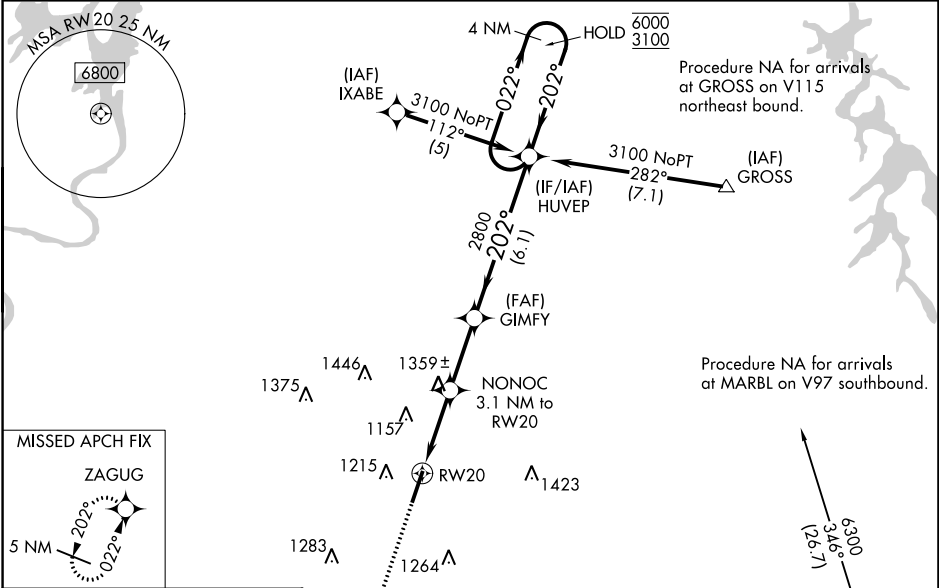
MCMINN COUNTY (MMI)

RNP APCH - GPS.

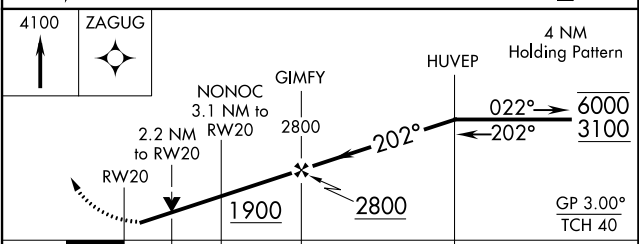
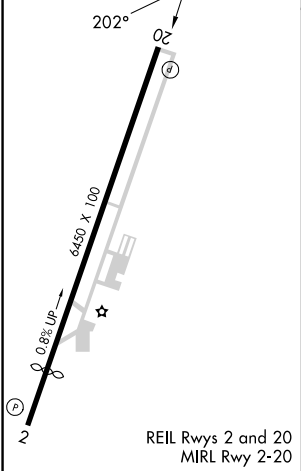
**⚠** Circling Rwy 2 NA at night. Baro-VNAV and VDP NA when using Mc Ghee Tyson altimeter setting.  
**⚠** Rwy 20 helicopter visibility reduction below 3/4 SM NA. For uncompensated Baro-VNAV systems, LNAV/VNAV NA below -16°C or above 54°C. When local altimeter setting not received, use Mc Ghee Tyson altimeter setting; increase LPV DA to 1275 feet and visibility all Cats 1/8 SM; increase LNAV/VNAV DA to 1819 feet and visibility all Cats 1 1/2 SM; increase all MDAs 120 feet and LNAV visibility Cat C and D 1/2 SM, and Circling visibility Cat A and C 1/4 SM.

**MISSED APPROACH:**  
Climb to 4100 direct ZAGUG and hold.

AWOS-3 <b>125.425</b>	KNOXVILLE APP CON <b>123.9 353.6</b>	UNICOM <b>122.8 (CTAF)</b>
--------------------------	---	-------------------------------



ELEV 874	TDZE 874
----------	----------



CATEGORY	A	B	C	D
LPV DA		1174-1	300 (300-1)	
LNAV/VNAV DA		1718-2 1/2	844 (900-2 1/2)	
LNAV MDA	1620-1 746 (800-1)	1620-1 1/4 746 (800-1 1/4)	1620-2 746 (800-2)	746 (800-2)
CIRCLING	1620-1 746 (800-1)	1620-1 1/4 746 (800-1 1/4)	1620-2 1/4 746 (800-2 1/4)	1820-3 946 (1000-3)

SE-1, 26 DEC 2024 to 23 JAN 2025

SE-1, 26 DEC 2024 to 23 JAN 2025