

WAAS CH 42900 W33A	APP CRS 333°	Rwy Idg TDZE Apt Elev	6001 82 82
--	------------------------	-----------------------------	---------------------------------------

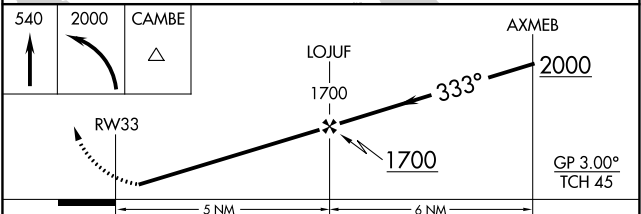
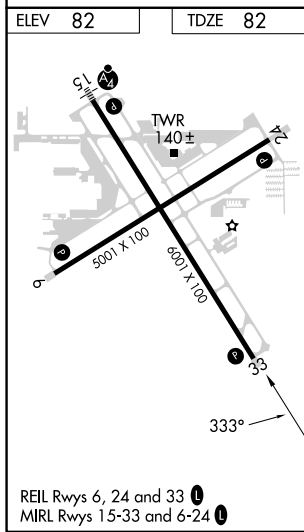
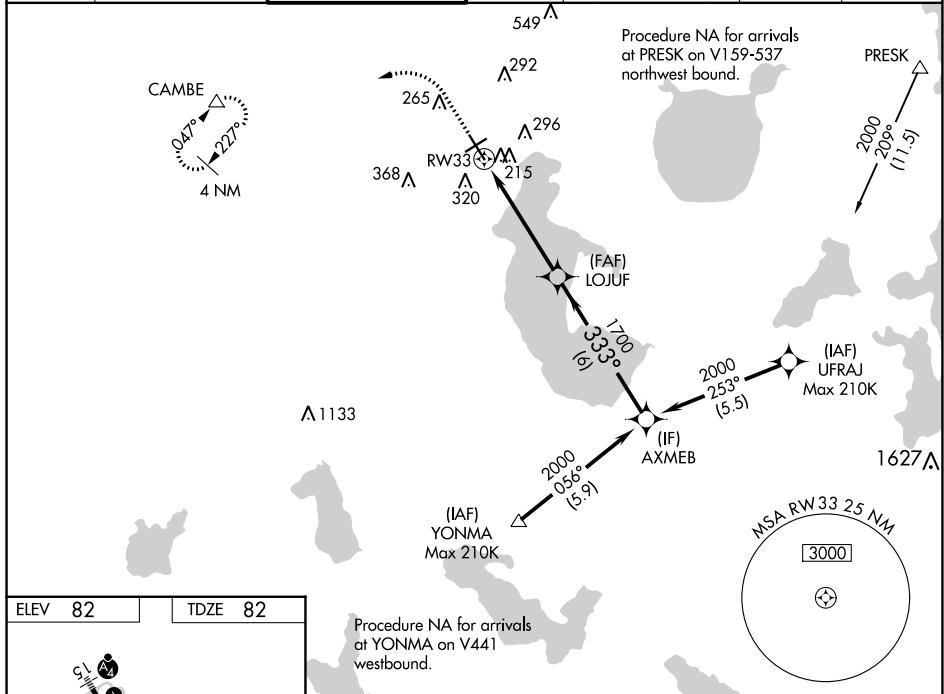
RNAV (GPS) RWY 33

KISSIMMEE GATEWAY (ISM)

⚠ Baro-VNAV NA when using Orlando Intl altimeter setting. For uncompensated Baro-VNAV systems, LNAV/VNAV NA below -1.5°C (5°F) or above 43°C (109°F). Helicopter visibility reduction below ¼ SM NA. DME/DME RNP-0.3 NA. When local altimeter setting not received, use Orlando Intl altimeter setting and increase all LPV DA to 359, all LNAV/VNAV DA to 429, and all MDA 40 feet; increase LNAV/VNAV all Cats visibility ½ SM, LNAV Cat C/D and Circling Cat C visibility ¼ SM.

MISSED APPROACH: Climb to 540 then climbing left turn to 2000 direct CAMBE and hold.

ATIS 128.775	ORLANDO APP CON 119.4 351.9	KISSIMMEE TOWER * 124.45 (CTAF) 📻	CLNC DEL 121.7	CLNC DEL 123.95 (when twr closed)	GND CON 121.7	UNICOM 122.95
------------------------	---------------------------------------	--	--------------------------	--	-------------------------	-------------------------



CATEGORY	A	B	C	D
LPV DA	332-1		250 (300-1)	
LNAV/VNAV DA	402-1		320 (400-1)	
LNAV MDA	480-1 398 (400-1)		480-1½ 398 (400-1½)	
CIRCLING	620-1 538 (600-1)		680-1½ 700-2 598 (600-1½) 618 (700-2)	

SE-3, 26 DEC 2024 to 23 JAN 2025

SE-3, 26 DEC 2024 to 23 JAN 2025