

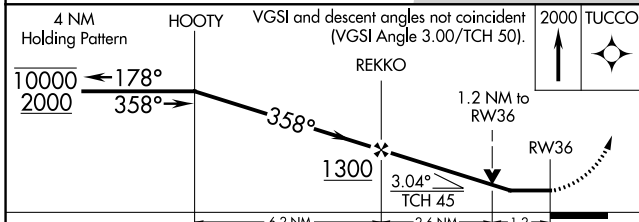
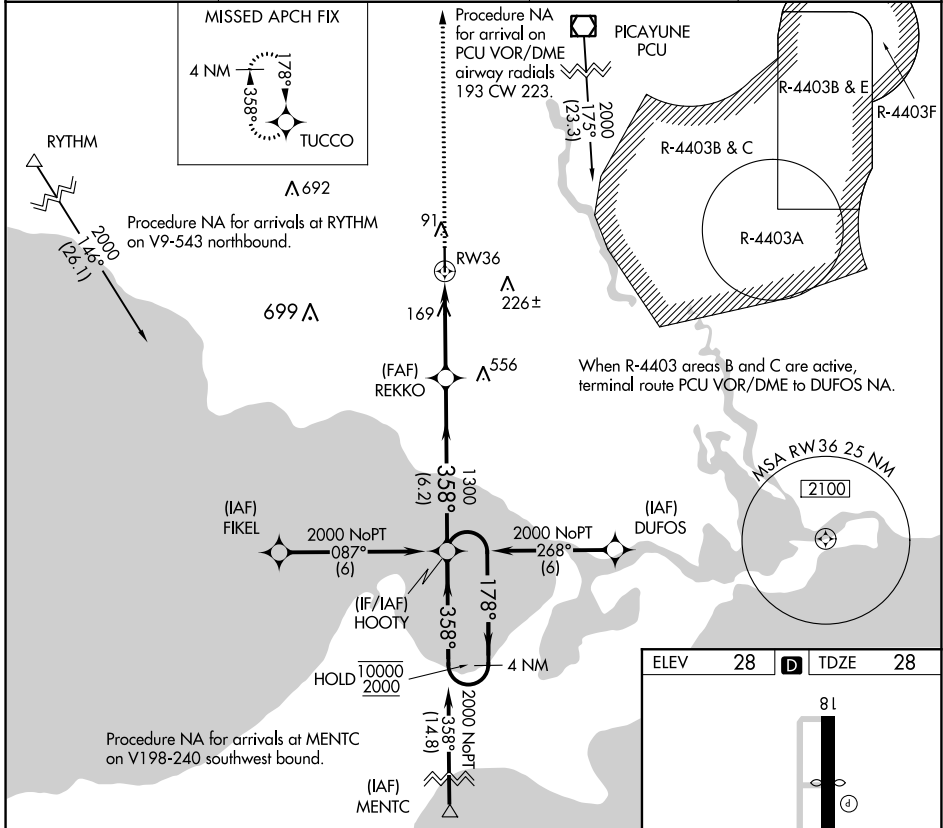
APP CRS	Rwy Ldg	5001
358°	TDZE	28
	Apt Elev	28

RNAV (GPS) RWY 36

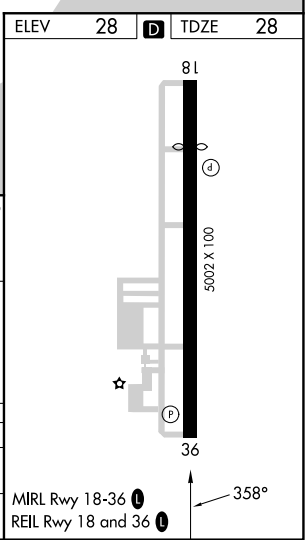
SLIDELL (ASD)

RNP APCH.	MISSED APPROACH: Climb to 2000 direct TUCCO and hold.
Rwy 36 helicopter visibility reduction below 3/4 SM NA.	

ASOS 132.475	NEW ORLEANS APP CON 133.15 290.3	UNICOM 122.8 (CTAF)	GCO 135.075
------------------------	--------------------------------------------	-------------------------------	-----------------------



CATEGORY	A	B	C	D
LNVA MDA	460-1	432 (500-1)	460-1/4 432 (500-1/4)	NA
CIRCLING	480-1	452 (500-1)	520-1/2 492 (500-1/2)	NA



SC-4, 26 DEC 2024 to 23 JAN 2025

SC-4, 26 DEC 2024 to 23 JAN 2025