

WAAS CH <b>90237</b> <b>W03A</b>	APP CRS <b>028°</b>	Rwy ldg TDZE Apt Elev	<b>3701</b> <b>2595</b> <b>2595</b>
--	------------------------	-----------------------------	---

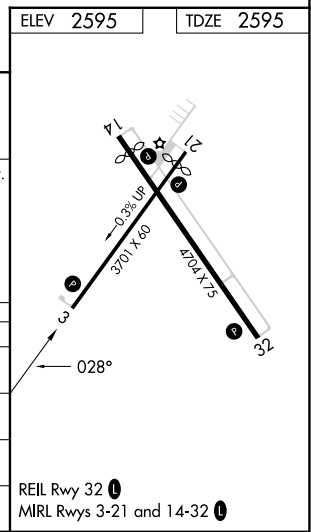
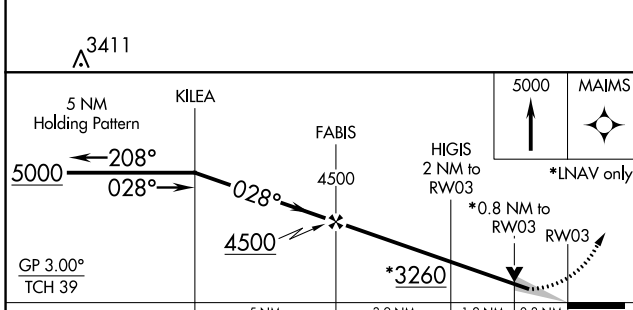
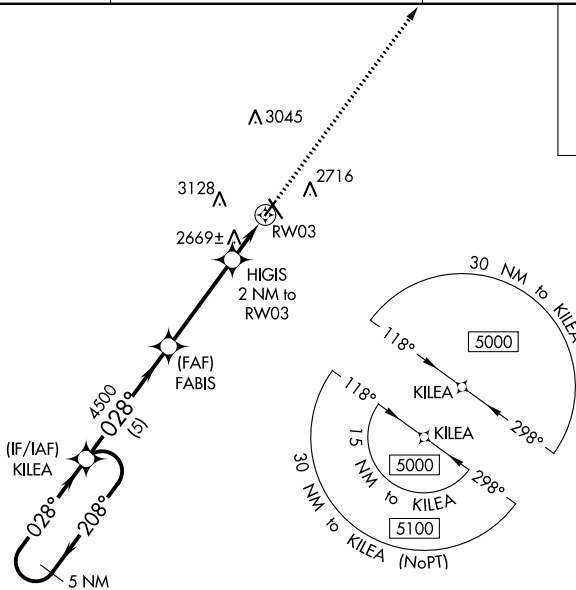
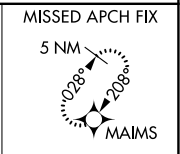
# RNAV (GPS) RWY 3

MILLER FLD (VTN)

**⚠** Baro-VNAV NA when using Ainsworth Rgnl altimeter setting. For uncompensated Baro-VNAV systems, LNAV/VNAV NA below -25°C (-13°F) or above 54°C (130°F). DME/DME RNP-0.3 NA. VDP NA with Ainsworth Rgnl altimeter setting. When local altimeter setting not received, use Ainsworth Rgnl altimeter setting and increase all DA 70 feet and all MDA 80 feet, increase LNAV/VNAV Cat A/B visibility 1/8 mile.

**MISSED APPROACH:**  
Climb to 5000 direct MAIMS and hold.

ASOS <b>118.075</b>	DENVER CENTER <b>127.95 338.2</b>	UNICOM <b>122.8 (CTAF) 0</b>
------------------------	--------------------------------------	---------------------------------



CATEGORY	A	B	C	D
LPV DA	2845-1	250 (300-1)		NA
LNAV/VNAV DA	2845-1	250 (300-1)		NA
LNAV MDA	2920-1	325 (400-1)		NA
<b>C</b> CIRCLING	3080-1 485 (500-1)	3560-1½ 965 (1000-1½)		NA

NC-2, 26 DEC 2024 to 23 JAN 2025

NC-2, 26 DEC 2024 to 23 JAN 2025