

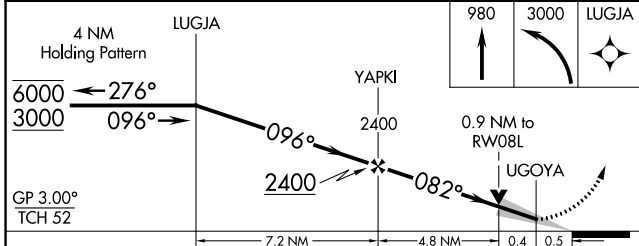
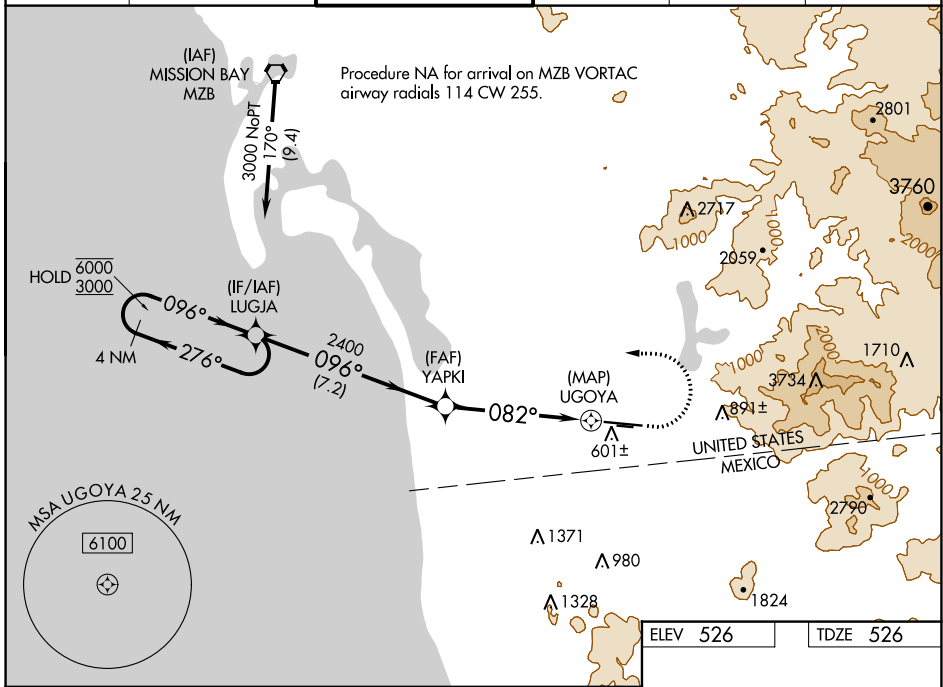
WAAS CH <b>56534</b> <b>W08A</b>	APP CRS <b>082°</b>	Rwy Idg <b>7972</b> TDZE <b>526</b> Apt Elev <b>526</b>
--	------------------------	---

# RNAV (GPS) RWY 8L

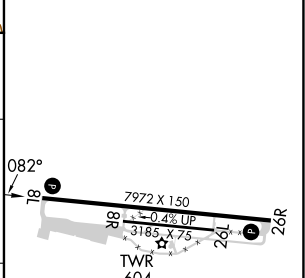
BROWN FLD MUNI (SDM)

RNP APCH - GPS.		MISSED APPROACH: (Do not exceed 190K until LUGJA) Climb to 980 then climbing left turn to 3000 direct LUGJA and hold.			
<p><b>⚠</b> Circling NA south of Rwy 8R-26L. For uncompensated Baro-VNAV systems, LNAV/VNAV NA below 1°C or above 54°C.</p>					

ATIS <b>132.35</b>	SOCAL APP CON <b>124.35 279.625</b>	<b>BROWN TOWER *</b> <b>128.25 (CTAF) 0 225.4</b>	GND CON <b>124.4</b>	CLNC DEL <b>124.4</b>	UNICOM <b>122.95</b>
-----------------------	--	--	-------------------------	--------------------------	-------------------------



ELEV 526	TDZE 526
----------	----------



CATEGORY	A	B	C	D
LPV DA		726-1	200 (200-1)	
LNAV/VNAV DA		776-1	250 (300-1)	
LNAV MDA		860-1	334 (400-1)	
<b>C</b> CIRCLING	1020-1	494 (500-1)	1340-2½ 814 (900-2½)	2260-3 1734 (1800-3)

REIL Rwy 26R
REIL Rwy 8L <b>0</b>
MIRL Rwy 8R-26L <b>0</b>
HIRL Rwy 8L-26R <b>0</b>

SW-3, 26 DEC 2024 to 23 JAN 2025

SW-3, 26 DEC 2024 to 23 JAN 2025