

WAAS CH 49200 W12A	APP CRS 116°	Rwy Idg TDZE Apt Elev	4001 193 193
--	------------------------	-----------------------------	---

RNAV (GPS) RWY 12

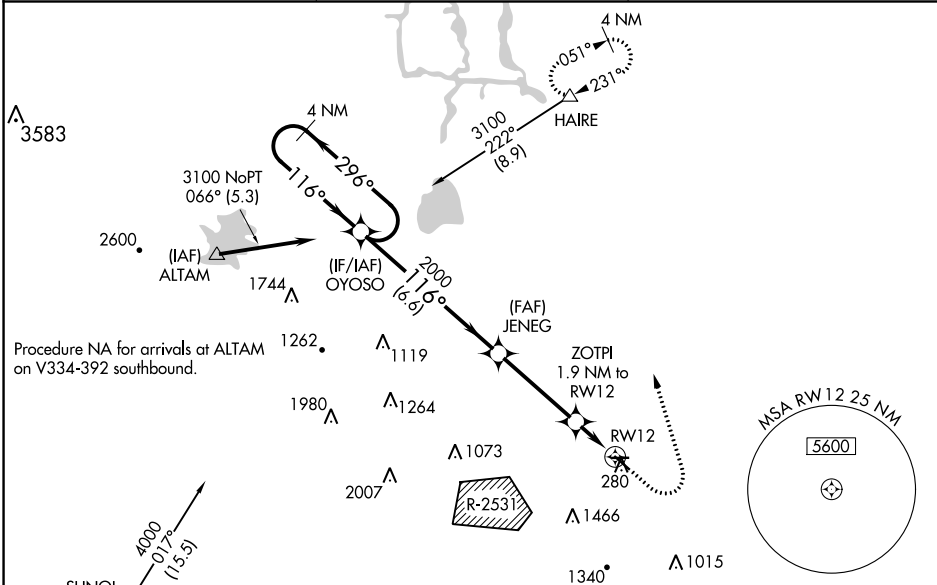
TRACY MUNI (TCY)

RNP APCH

▼ For uncompensated Baro-VNAV systems, LNAV/VNAV NA below -15°C or above 54°C.
 Circling NA southwest of Rwy 12-30. Baro-VNAV and VDP NA when using Stockton altimeter setting.
 Circling Rwy 30 NA at night. Rwy 12 helicopter visibility reduction below 3/4 SM NA.
 When local altimeter setting not received, use Stockton altimeter setting; increase all DAs to 507 feet;
 increase all MDAs 60 feet and visibilities LNAV Cat C 1/8 SM.

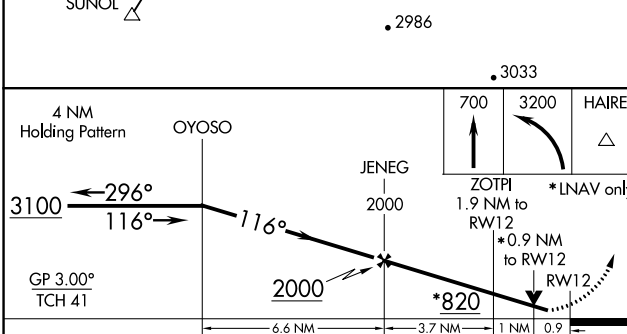
MISSED APPROACH:
 Climb to 700 then
 climbing left turn to
 3200 direct HAIRE
 and hold.

AWOS-3 118.375	NORCAL APP CON 123.85 278.3	UNICOM 123.075 (CTAF)
--------------------------	---------------------------------------	---------------------------------

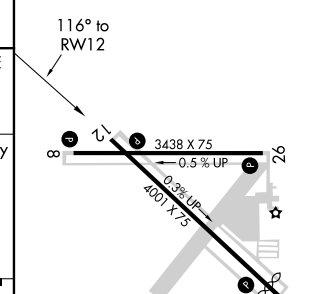


SW-2, 26 DEC 2024 to 23 JAN 2025

SW-2, 26 DEC 2024 to 23 JAN 2025



ELEV	193	TDZE	193
------	-----	------	-----



CATEGORY	A	B	C	D
LPV DA	443-7/8	250 (300-7/8)		NA
LNAV/VNAV DA	447-7/8	254 (300-7/8)		NA
LNAV MDA	520-1	327 (400-1)		NA
CIRCLING	580-1 387 (400-1)	660-1 467 (500-1)	660-1 1/2 467 (500-1 1/2)	NA

MIRL Rwy 8-26 and 12-30
 REIL Rwy 8, 12, 26 and 30