

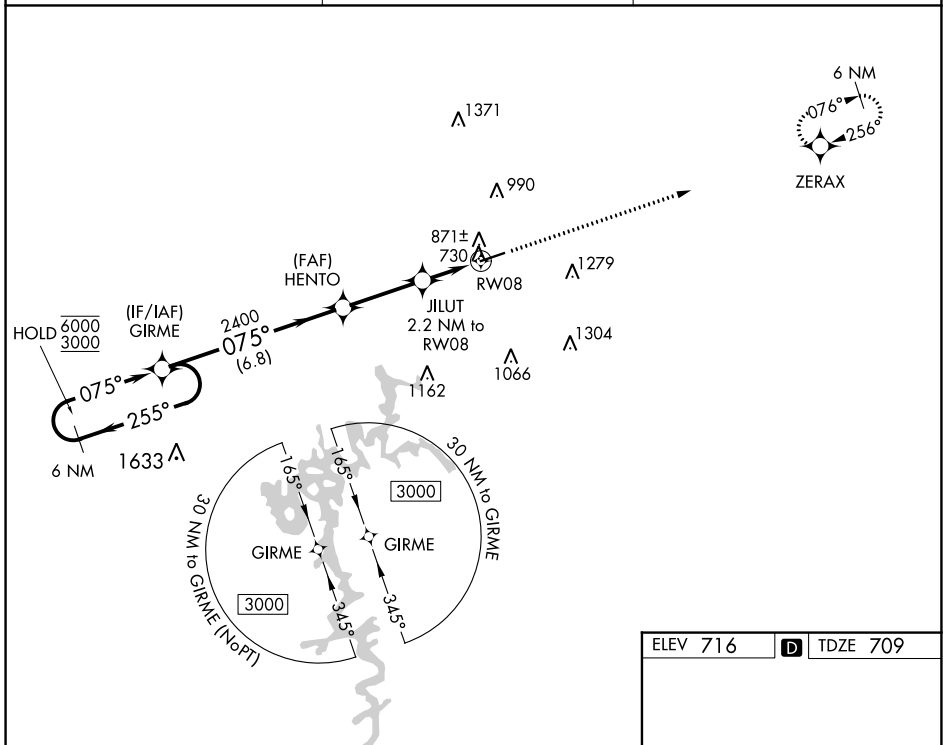
WAAS CH 77607 W08A	APP CRS 075°	Rwy Idg TDZE Apt Elev	5000 709 716
--	------------------------	-----------------------------	---

RNAV (GPS) RWY 8

GLASGOW MUNI (GLW)

RNP APCH.	MISSED APPROACH: Climb to 3000 direct ZERAX and hold.
<p>⚠ For uncompensated Baro-VNAV systems, LNAV/VNAV NA below -16°C or above 54°C.</p>	

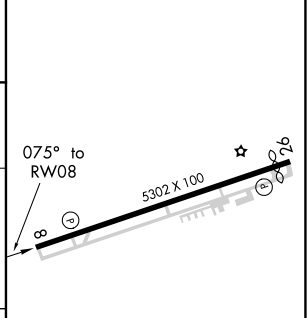
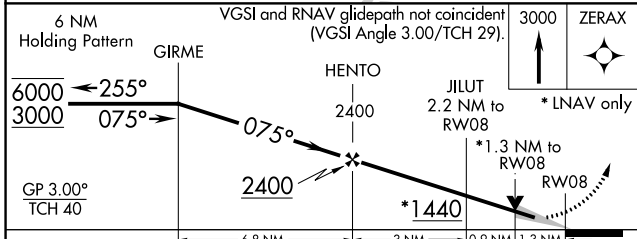
AWOS-3 118.525	MEMPHIS CENTER 132.9 290.3	UNICOM 122.8 (CTAF) 1
--------------------------	--------------------------------------	--



SE-1, 26 DEC 2024 to 23 JAN 2025

SE-1, 26 DEC 2024 to 23 JAN 2025

ELEV 716	D TDZE 709
----------	-------------------



CATEGORY	A	B	C	D
LPV DA	971-1		262 (300-1)	
LNAV/VNAV DA	1125-1 3/8		416 (500-1 3/8)	
LNAV MDA	1140-1	431 (500-1)	1140-1 1/4	431 (500-1 1/4)

MIRL Rwy 8-26 **1**
REIL Rwy 8 and 26 **1**