

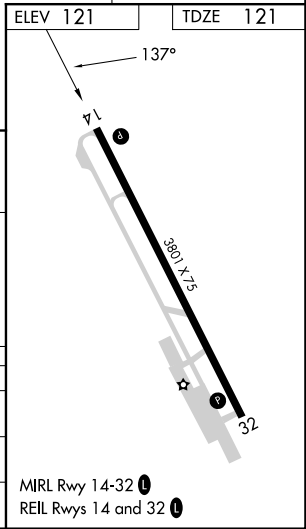
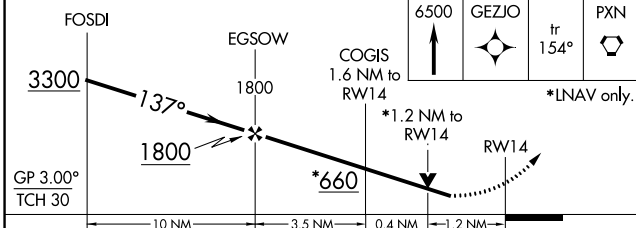
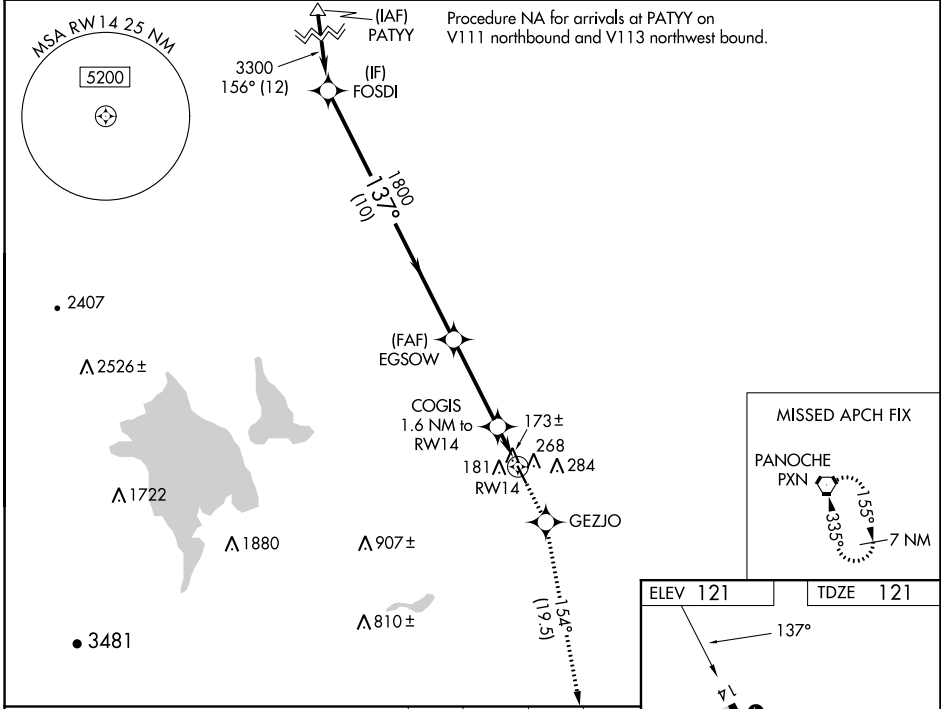
WAAS CH 53715 W14A	APP CRS 137°	Rwy Idg TDZE Apt Elev	3801 121 121
--	------------------------	-----------------------------	---

RNAV (GPS) RWY 14

LOS BANOS MUNI (LSN)

RNP APCH.		MISSED APPROACH: Climb to 6500 direct GEZJO and on track 154° to PXN VORTAC and hold, continue climb-in-hold to 6500.
⚠ NA Rwy 14 helicopter visibility reduction below ¼ SM NA. Baro-VNAV and VDP NA when using Merced Yosemite Rgnl altimeter setting. For uncompensated Baro-VNAV systems, LNAV/VNAV NA below -15°C or above 54°C. When local altimeter setting not received, use Merced Yosemite Rgnl altimeter setting and increase all DA/MDA 60 feet, and all visibility ¼ SM.		

AWOS-3 118,675	NORCAL APP CON 120.95 269,45	UNICOM 122.8 (CTAF) 📻
--------------------------	--	--



	FOSDI		EGSOW		6500	GEZJO	fr 154°	PXN
	3300		1800		↑	☼	☼	☼
	GP 3.00° TCH 30		*660		*LNAV only.			
	10 NM		3.5 NM		0.4 NM	1.2 NM		
CATEGORY	A	B		C		D		
LPV DA	455-1¼		334 (400-1¼)					
LNAV/VNAV DA	519-1½		398 (400-1½)					
LNAV MDA	520-1	399 (400-1)		520-1½	399 (400-1½)		520-1¼	399 (400-1¼)

SW-2, 26 DEC 2024 to 23 JAN 2025

SW-2, 26 DEC 2024 to 23 JAN 2025