

WAAS CH <b>69538</b> <b>W01A</b>	APP CRS <b>011°</b>	Rwy Idg <b>4802</b> TDZE <b>358</b> Apt Elev <b>358</b>
--	------------------------	---

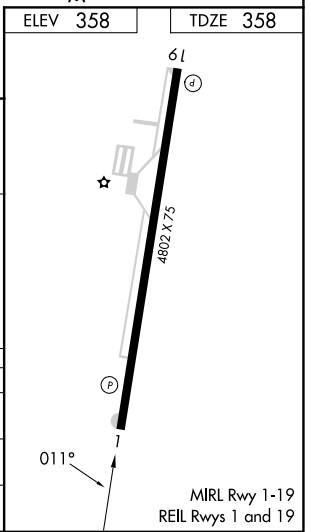
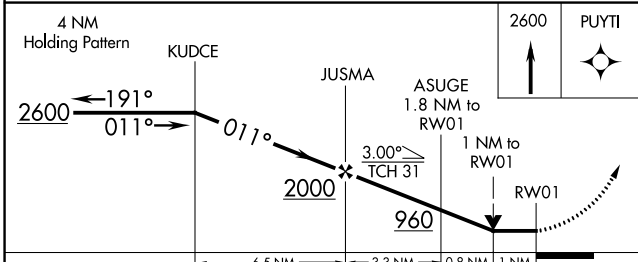
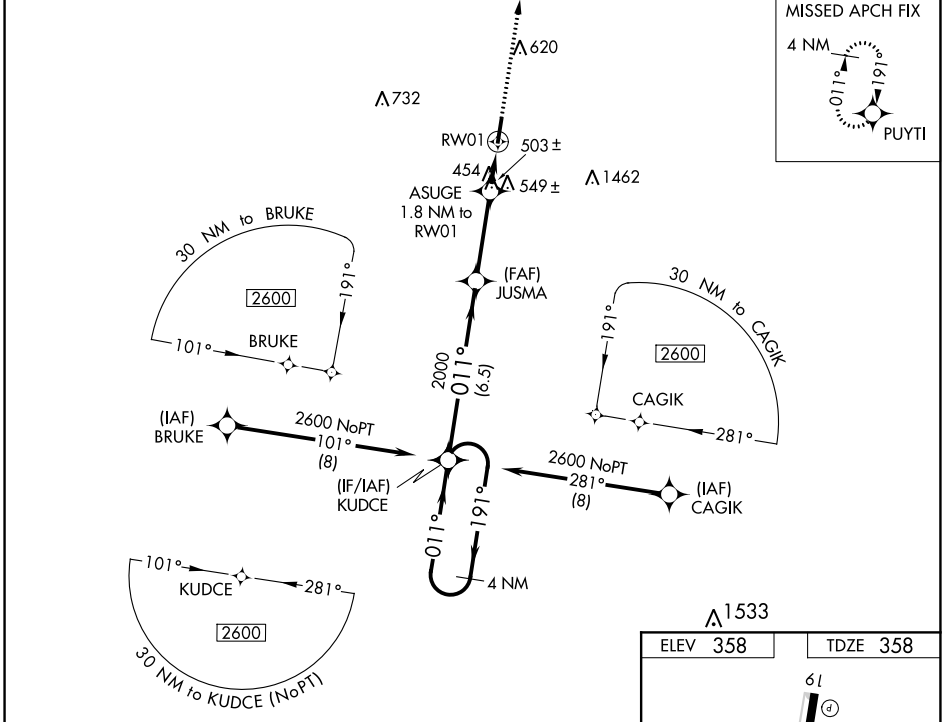
# RNAV (GPS) RWY 1

GIBSON COUNTY (TGC)

**NA** Night landing: Rwy 19 NA. DME/DME RNP-0.3 NA. Helicopter visibility reduction below 3/4 SM NA. Obtain local altimeter setting on CTAF; when not received use Jackson Rgnl altimeter setting and increase all MDA 60 feet, increase Circling Cat C visibility 1/4 mile.

MISSED APPROACH: Climb to 2600 direct PUYTI and hold.

MEMPHIS CENTER **134.65 316.15** UNICOM **122.8 (CTAF)**



CATEGORY	A	B	C	D
LP MDA	720-1 362 (400-1)			
LNAV MDA	800-1 442 (500-1)	800-1 3/8 442 (500-1 3/8)		
<b>C</b> CIRCLING	980-1 622 (700-1)	980-1 3/4 622 (700-1 3/4)	1780-3 1422 (1500-3)	

SE-1, 26 DEC 2024 to 23 JAN 2025

SE-1, 26 DEC 2024 to 23 JAN 2025