

WAAS CH 72938 W19A	APP CRS 191°	Rwy Idg TDZE Apt Elev	4802 356 358
--	------------------------	-----------------------------	---

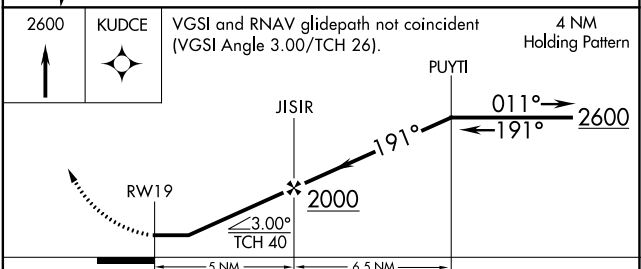
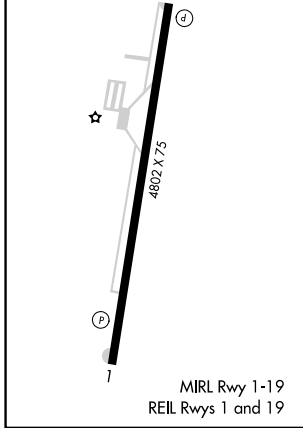
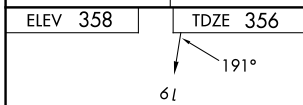
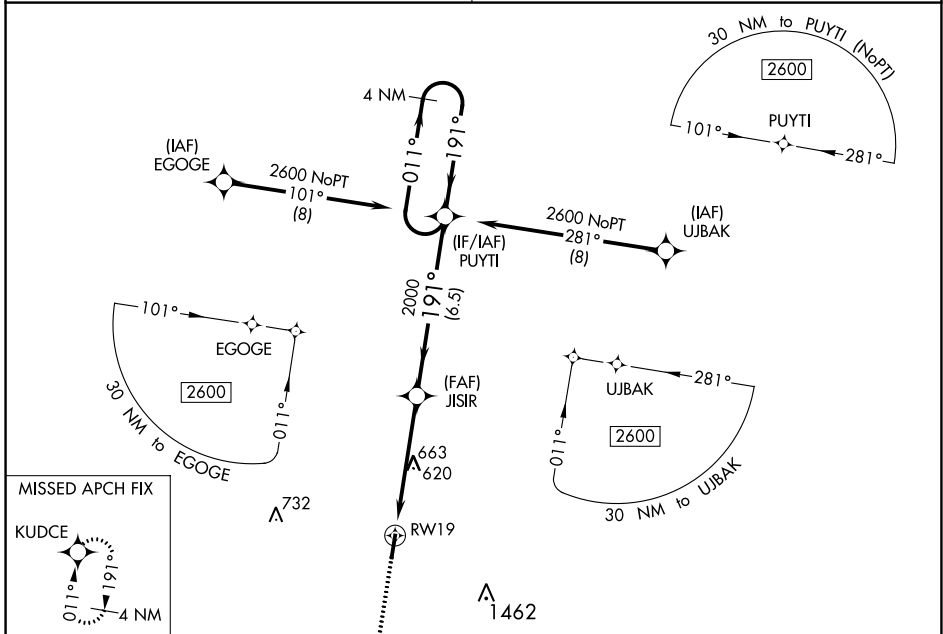
RNAV (GPS) RWY 19

GIBSON COUNTY (TGC)

▼ Night landing: Rwy 19 NA. DME/DME RNP-0.3 NA. Helicopter visibility reduction below 1 SM NA. Obtain local altimeter setting on CTAF; when not received use **▲ NA** Jackson Rgnl altimeter setting and increase all MDA 60 feet, increase Circling Cat C visibility ¼ mile.

MISSED APPROACH: Climb to 2600 direct KUDCE and hold.

MEMPHIS CENTER 134.65 316.15	UNICOM 122.8 (CTAF)
--	-------------------------------



CATEGORY	A	B	C	D
LP MDA	920-1	564 (600-1)	920-1 ⁵ / ₈	564 (600-1 ⁵ / ₈)
LNAV MDA	940-1	584 (600-1)	940-1 ³ / ₄	584 (600-1 ³ / ₄)
C CIRCLING	980-1	622 (700-1)	980-1 ³ / ₄ 622 (700-1 ³ / ₄)	1780-3 1422 (1500-3)

SE-1, 26 DEC 2024 to 23 JAN 2025

SE-1, 26 DEC 2024 to 23 JAN 2025