

WAAS CH <b>63102</b> <b>W18A</b>	APP CRS <b>180°</b>	Rwy Idg TDZE Apt Elev	<b>6498</b> <b>3062</b> <b>3062</b>
--	------------------------	-----------------------------	---

# RNAV (GPS) RWY 18

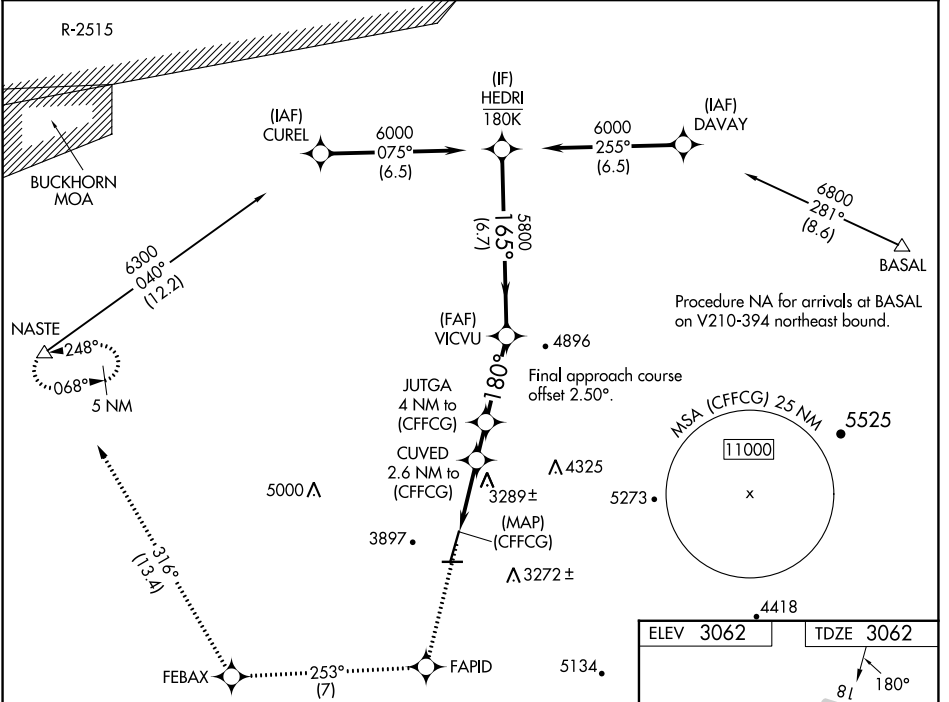
APPLE VALLEY (APV)

RNP APCH.

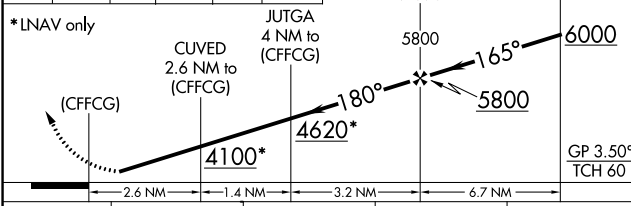
▼ Circling NA to Rwy 8 and 26. Circling to Rwy 36 NA at night.  
 ▲ NA Rwy 18 helicopter visibility reduction below ¾ SM NA. Use Victorville altimeter setting; if not received, procedure NA.

MISSED APPROACH: Climb to 6000 direct FAPID and track 253° to FEBAX and track 316° to NASTE and hold.

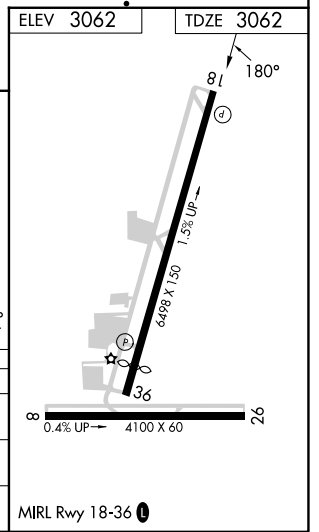
VCV AWOS-3 <b>135.475</b>	JOSHUA APP CON <b>124.55 363.0</b>	AUNICOM <b>122.8 (CTAF) 0</b>
------------------------------	---------------------------------------	----------------------------------



6000	FAPID	tr 253°	FEBAX	tr 316°	NASTE	VGSI and RNAV glidepath not coincident (VGSI Angle 3.50/TCH 49).
------	-------	---------	-------	---------	-------	--



CATEGORY	A	B	C	D
LPV DA	3380-7/8		318 (400-7/8)	
RNAV MDA	3600-1	538 (600-1)	3600-1½	538 (600-1½)
CIRCLING	4220-1¼ 1158 (1200-1¼)	4440-1½ 1378 (1400-1½)	4740-3	1678 (1700-3)



SW-3, 26 DEC 2024 to 23 JAN 2025

SW-3, 26 DEC 2024 to 23 JAN 2025