

APP CRS <b>267°</b>	Rwy Ldg <b>4400</b>
	TDZE <b>893</b>
	Apt Elev <b>894</b>

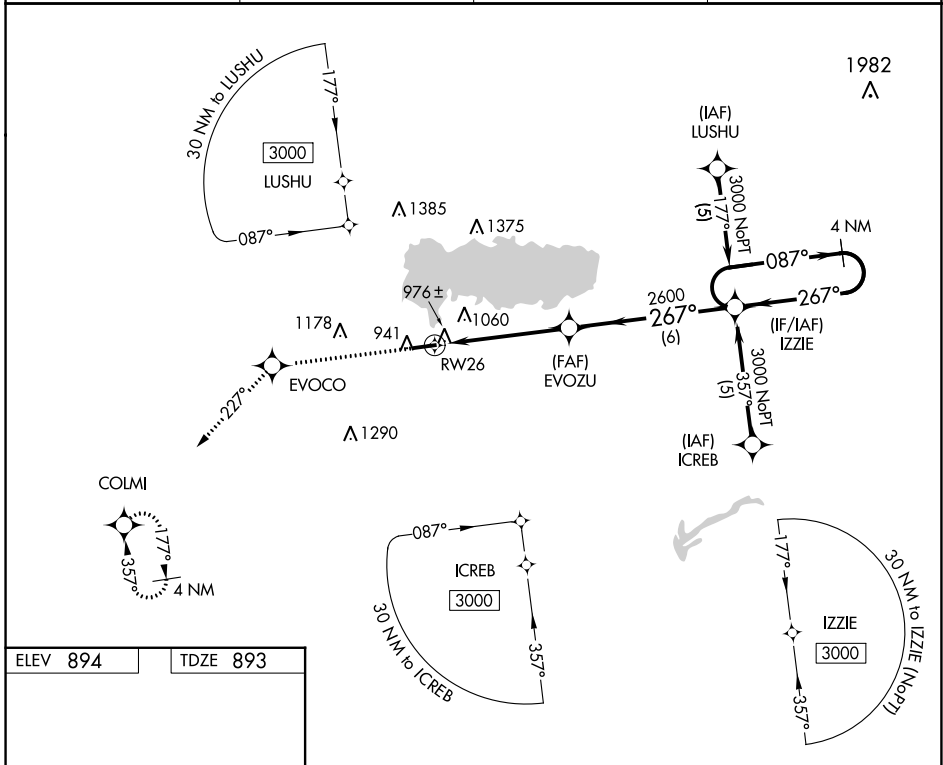
# RNAV (GPS) RWY 26

LAKEFIELD (CQA)

**⚠** DME/DME RNP-0.3 NA. Visibility reduction by helicopters NA. Baro-VNAV NA. Use Wapakoneta altimeter setting; when not received, use James M Cox Dayton Intl altimeter setting: increase LNAV/VNAV DA to 1349 feet and visibility all Cats ¼ SM; increase all MDA 80 feet and visibility LNAV and Circling Cat C ¼ SM.

**⚠** MISSED APPROACH: Climb to 3000 direct EVOCO and on track 227° to COLMI and hold.

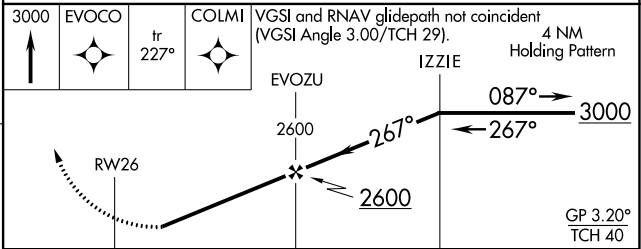
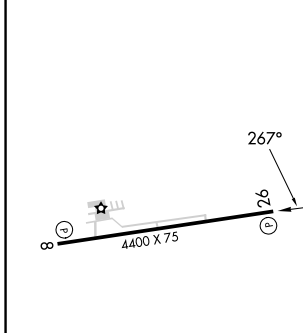
AXV AWOVS-3PT <b>128.325</b>	COLUMBUS APP CON <b>134.45 352.05</b>	UNICOM <b>122.8 (CTAF)</b>	<b>123.3</b> <b>⓪</b>
---------------------------------	--	-------------------------------	-----------------------



EC-2, 26 DEC 2024 to 23 JAN 2025

EC-2, 26 DEC 2024 to 23 JAN 2025

ELEV 894	TDZE 893
----------	----------



CATEGORY	A	B	C	D
LNAV/VNAV DA	1277-1¼		384 (400-1¼)	NA
LNAV MDA	1260-1		367 (400-1)	NA
CIRCLING	1360-1 466 (500-1)	1400-1 506 (600-1)	1480-1½ 586 (600-1½)	NA

REIL Rws 8 and 26 **⓪**  
MIRL Rwy 8-26 **⓪**