

WAAS CH <b>61116</b> <b>W08A</b>	APP CRS <b>087°</b>	Rwy ldg <b>4400</b> TDZE <b>894</b> Apt Elev <b>894</b>
--	------------------------	---

# RNAV (GPS) RWY 8

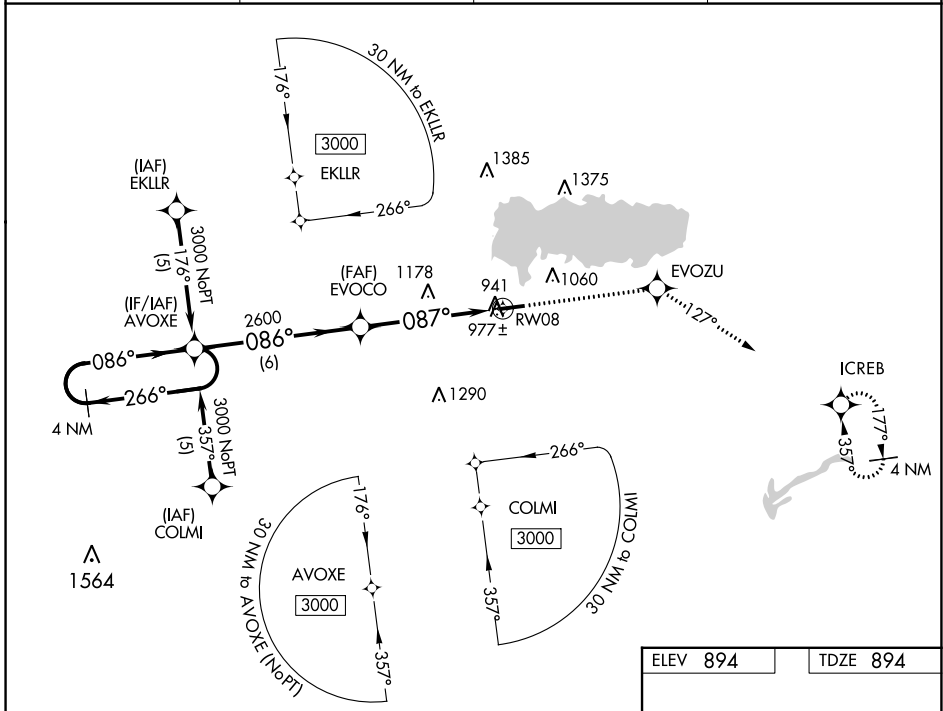
LAKEFIELD (CQA)

**⚠** DME/DME RNP-0.3 NA. Visibility reduction by helicopters NA. Baro-VNAV NA. Use Wapakoneta altimeter setting. When not received use James M Cox Dayton Intl altimeter setting and increase all DA 73 feet and all MDA 80 feet; increase LPV Cats A/B/C visibility ¼ mile, LNAV/VNAV Cats A/B/C visibility ½ mile and LNAV and Circling Cat C visibility ¼ mile.

**⚠** NA

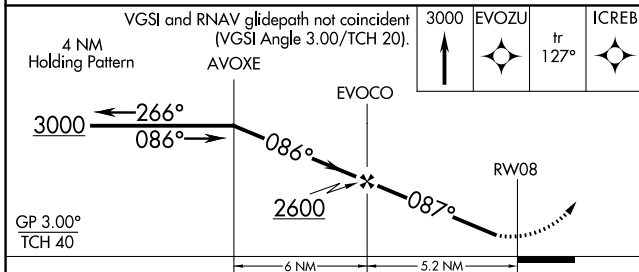
**MISSED APPROACH:** Climb to 3000 direct EVOZU and via track 127° to ICREB and hold.

AXV AWOS-3PT <b>128.325</b>	COLUMBUS APP CON <b>134.45 352.05</b>	UNICOM <b>122.8 (CTAF)</b>	<b>123.3</b> <b>0</b>
--------------------------------	--	-------------------------------	-----------------------

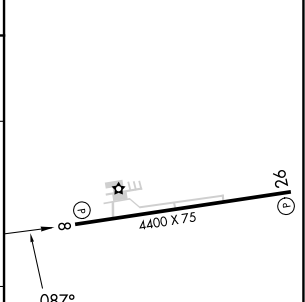


EC-2, 26 DEC 2024 to 23 JAN 2025

EC-2, 26 DEC 2024 to 23 JAN 2025



ELEV 894	TDZE 894
----------	----------



CATEGORY	A	B	C	D
LPV DA	1221-1¼	327 (400-1¼)		NA
LNAV/VNAV DA	1278-1¼	384 (400-1¼)		NA
LNAV MDA	1440-1	546 (600-1)	1440-1½ 546 (600-1½)	NA
CIRCLING	1440-1	546 (600-1)	1480-1½ 586 (600-1½)	NA

REIL Rwy 8 and 26 **0**  
MIRL Rwy 8-26 **0**