

(STYCK8.STYCK) 21280

AL-5824 (FAA)

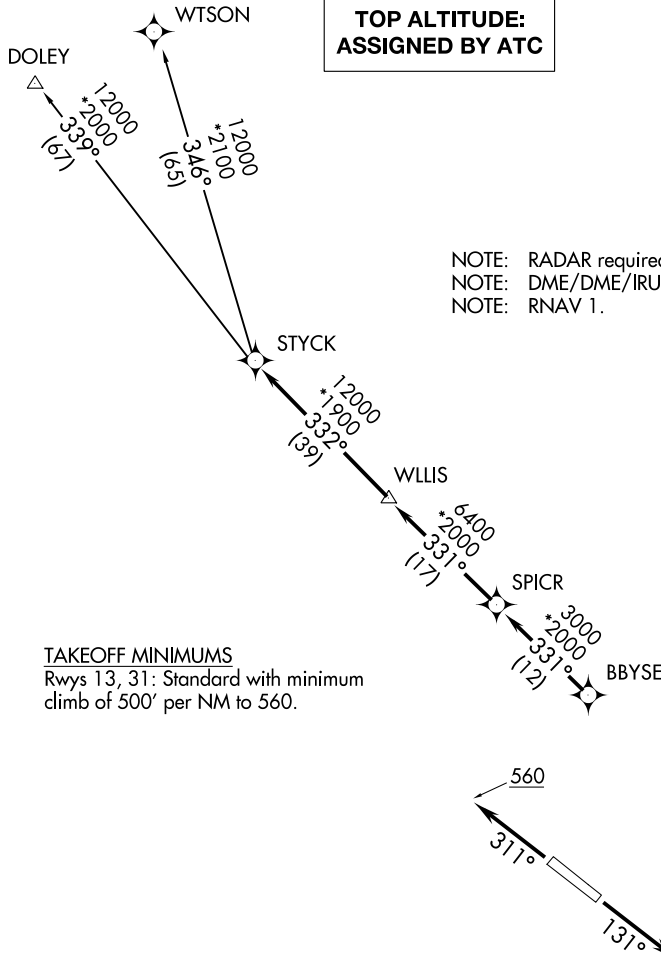
BAY CITY RGNL (BYY)

STYCK EIGHT DEPARTURE (RNAV)

BAY CITY, TEXAS

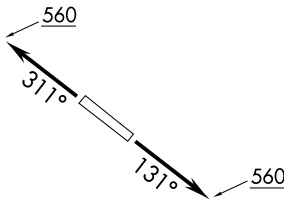
**TOP ALTITUDE:
ASSIGNED BY ATC**

AWOS-3
118.075
CTAF
122.8
HOUSTON DEP CON
128.6 360.85



NOTE: RADAR required.
NOTE: DME/DME/IRU or GPS required.
NOTE: RNAV 1.

TAKEOFF MINIMUMS
Rwys 13, 31: Standard with minimum
climb of 500' per NM to 560.



NOTE: Chart not to scale.

DEPARTURE ROUTE DESCRIPTION

TAKEOFF RUNWAY 13: Climb on heading 131° to 560 for RADAR vectors to BBYSE, thence. . .
TAKEOFF RUNWAY 31: Climb on heading 311° to 560 for RADAR vectors to BBYSE, thence. . .
. . .on track 331° to SPICR, then on track 331° to WLLIS, then on track 332° to STYCK, then on
(transition). Maintain ATC assigned altitude. Expect filed altitude 10 minutes after departure.

DOLEY TRANSITION (STYCK8.DOLEY)
WTSON TRANSITION (STYCK8.WTSON)

STYCK EIGHT DEPARTURE (RNAV)

(STYCK8.STYCK) 07OCT21

BAY CITY, TEXAS
BAY CITY RGNL (BYY)

SC-5, 26 DEC 2024 to 23 JAN 2025

SC-5, 26 DEC 2024 to 23 JAN 2025