

WAAS CH <b>77719</b> <b>W20A</b>	APP CRS <b>205°</b>	Rwy Idg TDZE <b>884</b> Apt Elev <b>892</b>
--	------------------------	---

# RNAV (GPS) RWY 20

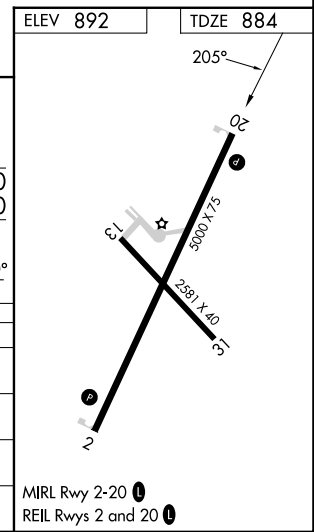
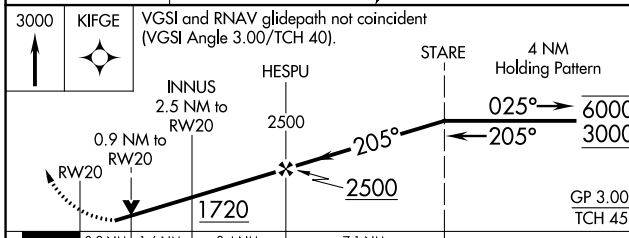
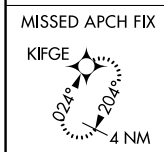
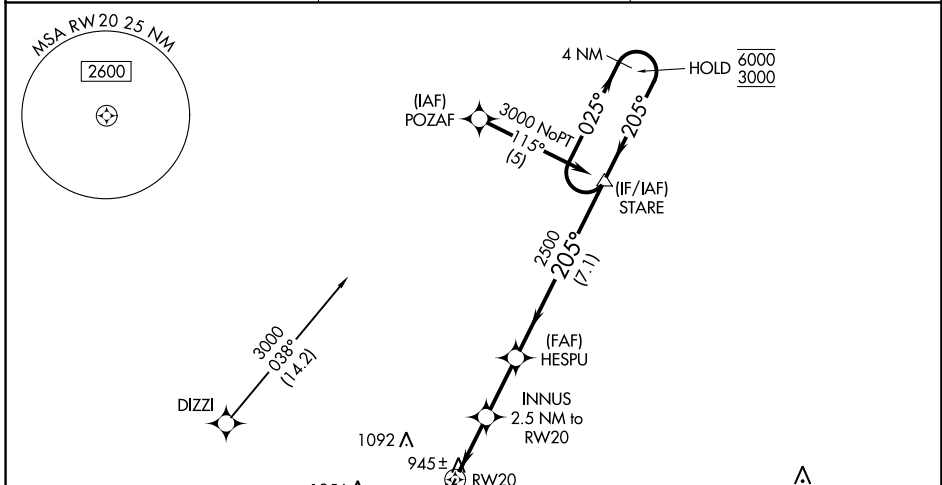
NEVADA MUNI (NVD)

RNP APCH - GPS.

**NA** Circling NA to Rws 13 and 31. Baro-VNAV and VDP NA when using Joplin altimeter setting. Rwy 20 helicopter visibility reduction below  $\frac{3}{4}$  SM NA. For uncompensated Baro-VNAV systems, LNAV/VNAV NA below -16°C or above 54°C. When local altimeter setting not received, use Joplin altimeter setting: increase LPV DA to 1249 feet; increase LNAV/VNAV DA to 1326 feet and all visibilities  $\frac{3}{8}$  SM; increase all MDAs 120 feet and visibility Cat C  $\frac{1}{4}$  SM.

MISSED APPROACH: Climb to 3000 direct KIFGE and hold.

AWOS-3PT <b>119.175</b>	KANSAS CITY CENTER <b>125.55 327.0</b>	UNICOM <b>122.8 (CTAF) 0</b>
----------------------------	---	---------------------------------



CATEGORY	A	B	C	D
LPV DA		1139-1 255 (300-1)		NA
LNAV/VNAV DA		1216-1 332 (400-1)		NA
LNAV MDA		1200-1 316 (400-1)		NA
CIRCLING	1260-1 368 (400-1)	1440-1 548 (600-1)	1440-1½ 548 (600-1½)	NA

NC-3, 26 DEC 2024 to 23 JAN 2025

NC-3, 26 DEC 2024 to 23 JAN 2025