

VORTAC LAL 116.0 Chan 107	APP CRS 101°	Rwy Idg 5000 TDZE 125 Apt Elev 125
---	------------------------	---

VOR RWY 9L

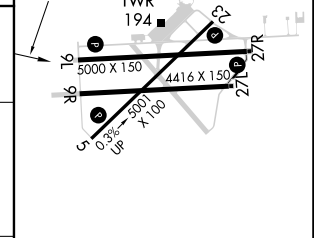
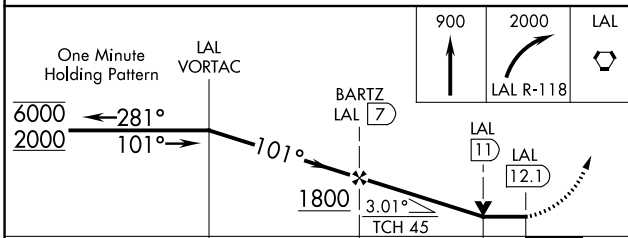
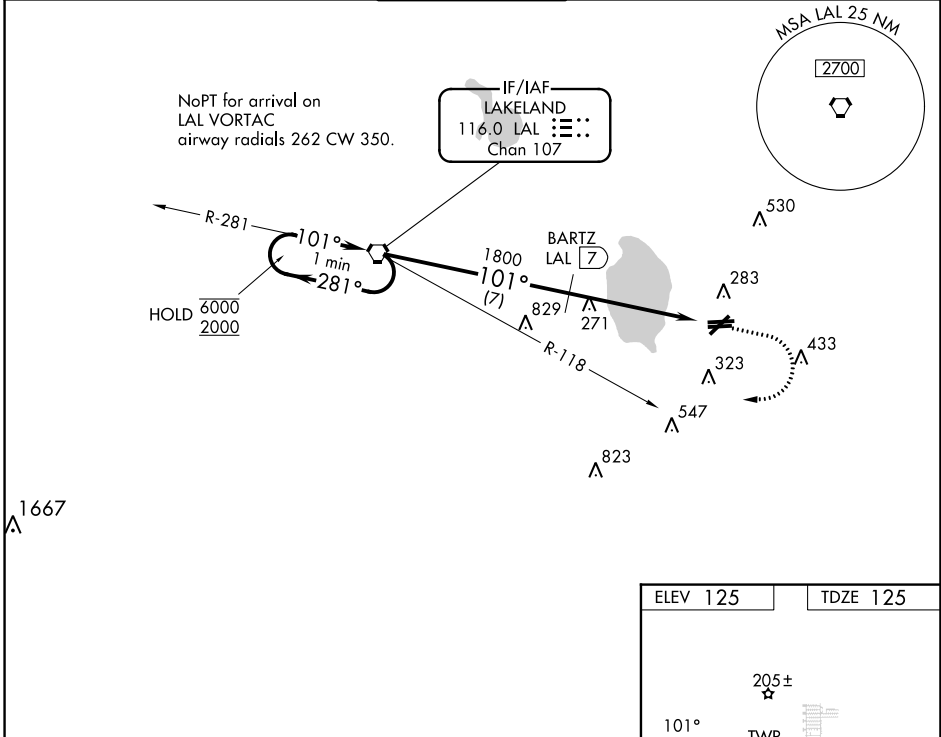
BARTOW EXEC (BOW)

DME required.

⚠ Circling Rwy 9R, 27L NA at night. Rwy 9L helicopter visibility reduction below $\frac{3}{4}$ SM NA. When local altimeter setting not received, use Tampa Intl altimeter setting; increase all MDA 120 feet, increase S-9L Cat C/D visibility $\frac{3}{8}$ SM and Circling Cat C/D visibility $\frac{1}{2}$ SM. VDP NA when using Tampa Intl altimeter setting.

MISSED APPROACH: Climb to 900 then climbing right turn to 2000 on LAL VORTAC R-118 to LAL VORTAC and hold.

AWOS-3 123.775	TAMPA APP CON 120.65 290.3	BARTOW TOWER ★ 121.20 (CTAF)	GND CON 121.9	UNICOM 122.95
--------------------------	--------------------------------------	---	-------------------------	-------------------------



CATEGORY	A	B	C	D
S-9L	540-1	415 (500-1)	540-1 $\frac{1}{8}$	415 (500-1 $\frac{1}{8}$)
CIRCLING	600-1 475 (500-1)	680-1 555 (600-1)	680-1 $\frac{1}{2}$ 555 (600-1 $\frac{1}{2}$)	840-2 $\frac{1}{4}$ 715 (800-2 $\frac{1}{4}$)

MIRL Rwy 5-23 and 9L-27R **Ⓡ**
REL Rwy 5, 23, 9L and 27R **Ⓡ**

SE-3, 26 DEC 2024 to 23 JAN 2025

SE-3, 26 DEC 2024 to 23 JAN 2025