

WAAS CH <b>77735</b> <b>W09A</b>	APP CRS <b>093°</b>	Rwy Idg TDZE Apt Elev	<b>3499</b> <b>1198</b> <b>1198</b>
--	------------------------	-----------------------------	---

# RNAV (GPS) RWY 9

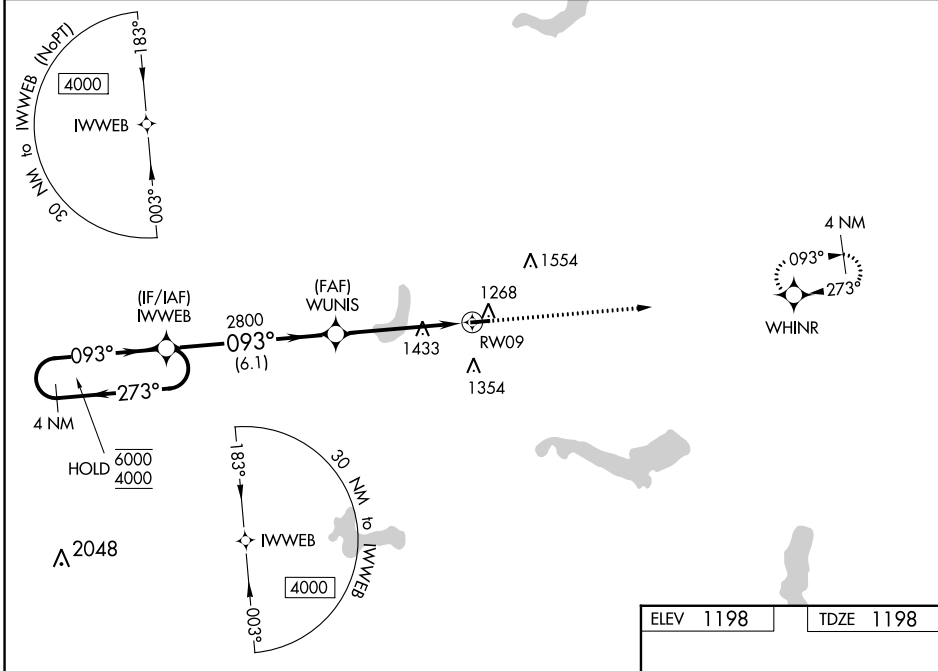
PORTAGE COUNTY (POV)

RNP APCH - GPS.

▼ Baro-VNAV and VDP NA when using CAK altimeter setting. For uncompensated Baro-VNAV systems, LNAV/VNAV NA below -17°C or above 54°C. Rwy 9 helicopter visibility reduction below ¾ SM NA. When local altimeter setting not received, use CAK altimeter setting and increase LPV DA to 1498 feet. Increase LNAV/VNAV DA to 1557 feet. Increase all MDAs 60 feet and LNAV visibility Cat C ¼ SM, and Circling visibility Cat C ¼ SM.

MISSED APPROACH: Climb to 4000 direct WHINR and hold, continue climb-in-hold to 4000.

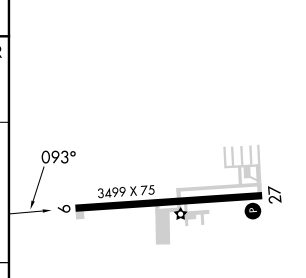
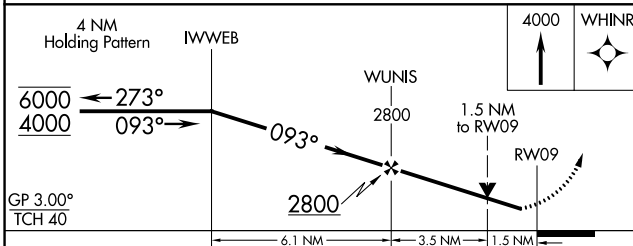
AWOS-3 <b>118.675</b>	CLEVELAND APP CON★ <b>125.5 371.875</b>	CLNC DEL <b>125.65</b>	UNICOM <b>123.05</b> (CTAF) <b>0</b>
--------------------------	--	---------------------------	---



EC-2, 26 DEC 2024 to 23 JAN 2025

EC-2, 26 DEC 2024 to 23 JAN 2025

ELEV 1198	TDZE 1198
-----------	-----------



CATEGORY	A	B	C	D
LPV DA	1448-1	250 (300-1)		NA
LNAV/VNAV DA	1507-1	309 (400-1)		NA
LNAV MDA	1700-1	502 (600-1)	1700-1 3/8 502 (600-1 3/8)	NA
CIRCLING	1740-1 542 (600-1)	1800-1 602 (700-1)	1860-1 3/4 662 (700-1 3/4)	NA

REIL Rwy 9 and 27 **0**  
MIRL Rwy 9-27 **0**