

| | | |
|--|------------------------|---|
| VORTAC RQZ 112.2 Chan 59 | APP CRS 010° | Rwy Idg 5500 TDZE 978 Apt Elev 984 |
|--|------------------------|---|

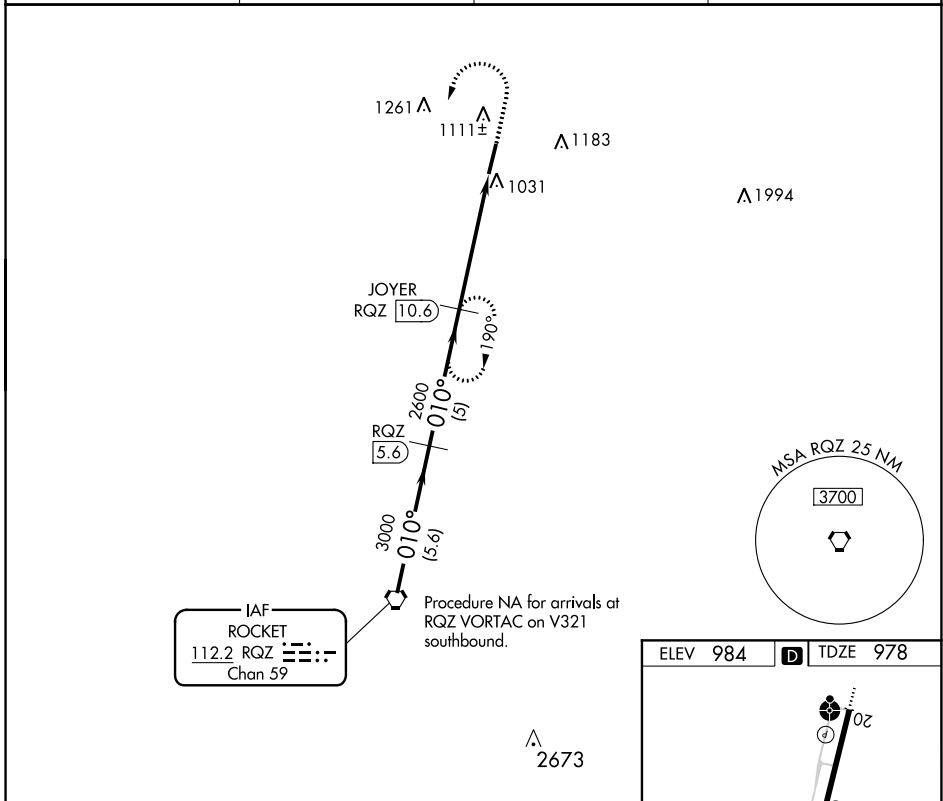
VOR/DME RWY 2

FAYETTEVILLE MUNI (FYM)

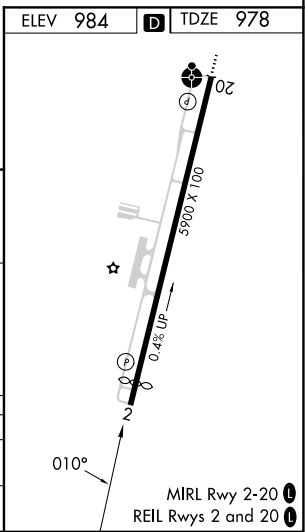
⚠ When local altimeter setting not received, use Huntsville Exec Tom Sharp Jr Fld altimeter setting and increase all MDA 120 feet; increase S-2 Cat C/D visibility ¼ SM, Circling Cat C visibility ½ SM, and Circling Cat D visibility ¼ SM. Rwy 2 helicopter visibility reduction below ¾ SM NA.

⚠ NA MISSED APPROACH: Climb to 2000 then climbing left turn to 3000 via RQZ R-010 to JOYER INT and hold.

| | | | |
|--------------------------|--|----------------------------------|---------------------------------|
| AWOS-3 135.275 | HUNTSVILLE APP CON * 125.6 354.1 | CLNC DEL (GCO) 121.725 | UNICOM 122.8 (CTAF) 0 |
|--------------------------|--|----------------------------------|---------------------------------|



| | | | | |
|-------------------|--|-----------------------|-------------------------|-------------------------|
| RQZ VORTAC | VGSI and descent angles not coincident (VGSI 3.00/TCH 22). | | | |
| | 4000 | 3000 | 2600 | 2000 |
| Procedure Turn NA | 010° | 010° | 010° | 010° |
| | 5.6 NM | 5 NM | 5 NM | |
| CATEGORY | A | B | C | D |
| S-2 | 1400-1 | 422 (500-1) | 1400-1¼ 422 (500-1¼) | 1400-1½ 422 (500-1½) |
| CIRCLING | 1420-1 436 (500-1) | 1540-1 556 (600-1) | 1580-1½ 596 (600-1½) | 1580-2 596 (600-2) |



SE-1, 26 DEC 2024 to 23 JAN 2025

SE-1, 26 DEC 2024 to 23 JAN 2025