

WAAS CH 97538 W13A	APP CRS 138°	Rwy Idg TDZE Apt Elev	5101 1910 1910
--	------------------------	-----------------------------	---

RNAV (GPS) RWY 13

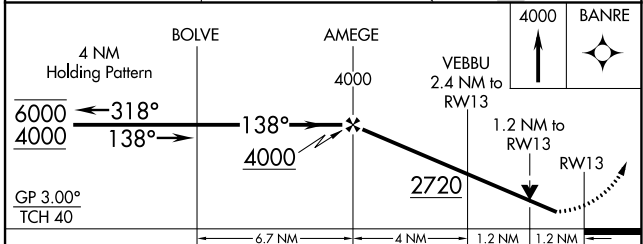
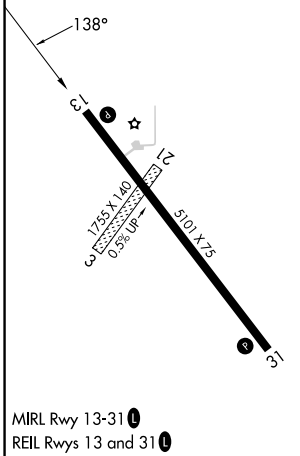
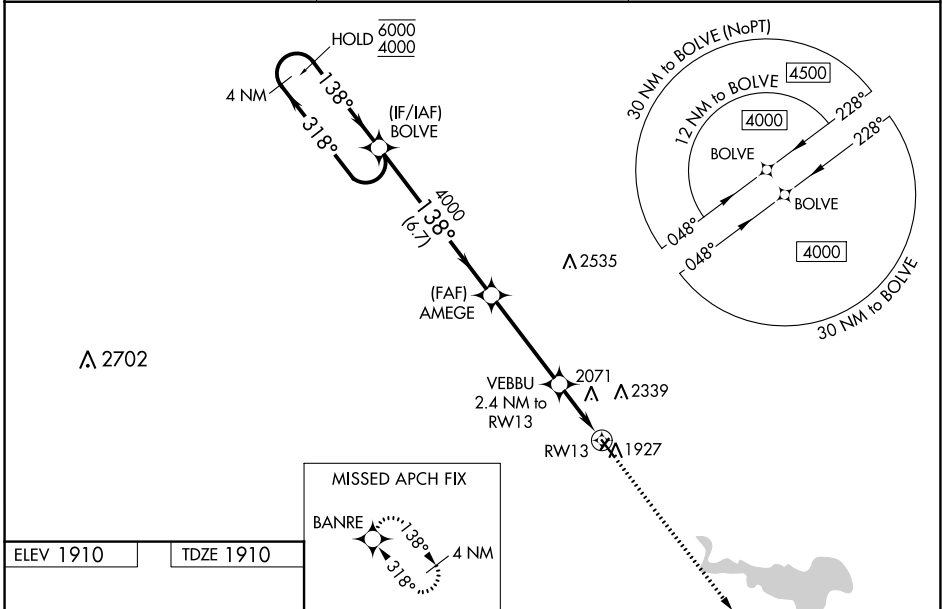
PHILLIPSBURG MUNI (PHG)

RNP APCH - GPS.

NA Rwy 13 helicopter visibility reduction below 3/4 SM NA. Circling NA northeast of Rwy 13-31. For uncompensated Baro-VNAV systems, LNAV/VNAV NA below -18°C or above 54°C. Circling NA to Rwy 3 and 21. Baro-VNAV and VDP NA when using HYS altimeter setting. When local altimeter setting not received, use HYS altimeter setting and increase LPV DA to 2296 feet and all visibilities 1/2 SM. Increase LNAV/VNAV DA to 2497 feet and all visibilities 3/8 SM. Increase all MDA 140 feet and LNAV visibility Cat C 3/8 SM, and Circling visibility Cat C 1/4 SM.

MISSED APPROACH: Climb to 4000 direct BANRE and hold.

AWOS-3PT 119.125	DENVER CENTER 132.7 226.675	UNICOM 122.8 (CTAF) 0
----------------------------	---------------------------------------	---------------------------------



CATEGORY	A	B	C	D
LPV DA	2160-1		250 (300-1)	NA
LNAV/VNAV DA	2361-1 3/8		451 (500-1 3/8)	NA
LNAV MDA	2340-1	430 (500-1)	2340-1 1/4 430 (500-1 1/4)	NA
C CIRCLING	2340-1 430 (500-1)	2360-1 450 (500-1)	2380-1 1/2 470 (500-1 1/2)	NA

NC-2, 26 DEC 2024 to 23 JAN 2025

NC-2, 26 DEC 2024 to 23 JAN 2025