

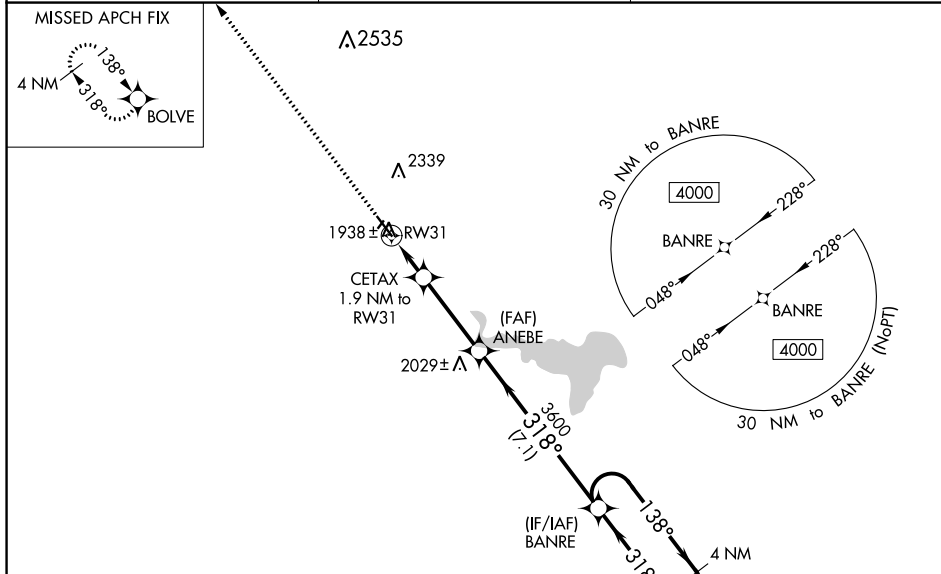
WAAS CH <b>93638</b> <b>W31A</b>	APP CRS <b>318°</b>	Rwy Idg TDZE Apt Elev	<b>5101</b> <b>1900</b> <b>1907</b>
--	------------------------	-----------------------------	---

# RNAV (GPS) RWY 31

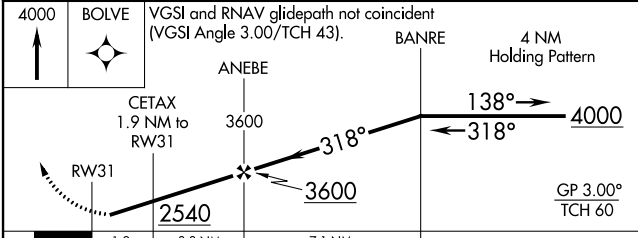
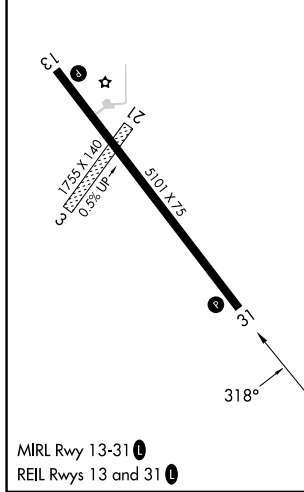
PHILLIPSBURG MUNI (PHG)

RNP APCH - GPS.	<p><b>⚠</b> Baro-VNAV NA when using Hays Rgnl altimeter setting. For uncompensated Baro-VNAV systems, LNAV/VNAV NA below -18°C or above 54°C. Circling NA northeast of Rwy 13-31. Rwy 31 helicopter visibility reduction below 1 SM NA. Circling NA to Rws 3 and 21. When local altimeter setting not received, use Hays Rgnl altimeter setting and increase all DA and MDA 140 feet, increase LPV and LNAV/VNAV visibilities ¼ mile all Cats and LNAV and Circling Cat C visibility ¼ mile.</p>	MISSED APPROACH: Climb to 4000 direct BOLVE and hold.
-----------------	--	---

AWOS-3PT <b>119.125</b>	DENVER CENTER <b>132.7 226.675</b>	UNICOM <b>122.8 (CTAF)</b>
----------------------------	---------------------------------------	-------------------------------



ELEV 1907	TDZE 1900
-----------	-----------



CATEGORY	A	B	C	D
LPV DA		2150-1 250 (300-1)		NA
LNAV/VNAV DA		2150-1 250 (300-1)		NA
LNAV MDA		2200-1 300 (300-1)		NA
<b>C</b> CIRCLING	2280-1 373 (400-1)	2360-1 453 (500-1)	2380-1½ 473 (500-1½)	NA

NC-2, 26 DEC 2024 to 23 JAN 2025

NC-2, 26 DEC 2024 to 23 JAN 2025